



# The Shape of Things to Come

A publication of Facilities Management • Western Washington University • Bellingham, Washington • Volume 22

## INTRODUCTION

As we go to press with this 22nd volume of “The Shape of Things to Come,” the south end of campus looks markedly different than it did three years ago when the Campus Recreation Center and Communications Facility were still “on the drawing board.” The state-of-the-art Campus Recreation Center is scheduled to open this fall, and construction of the Communications Facility is far enough along to reveal the outline of the newest academic structure on campus (due to open in spring 2004). The Campus Services Facility (which opened in fall 2002) anchors the far southwest corner of campus and borders a vastly improved Bill McDonald Parkway.

You will see additional construction on campus this summer, as we continue both major building projects and smaller maintenance and improvement jobs that keep our facilities and campus able to serve our students. We will try to minimize any disruptions to your usual routine, but ask for your patience and cooperation.

Tim Wynn, Director  
Facilities Management



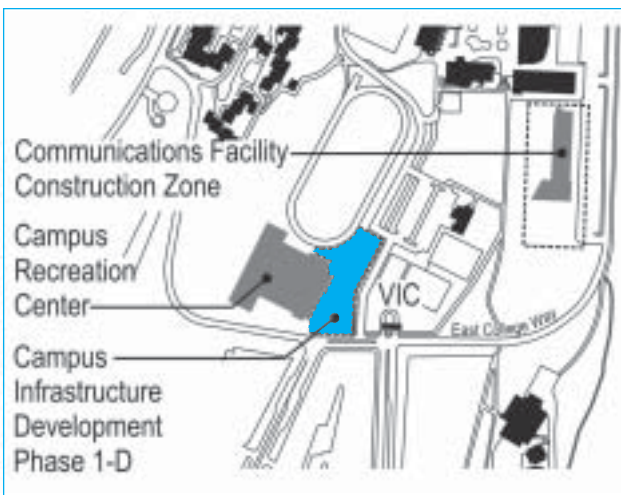
Campus Recreation Center - North Elevation

## Campus Recreation Center

Construction on the 100,000 square foot Campus Recreation Center designed by the Seattle firm of BJSS/ Duarte Bryant and Opsis Architecture LLP is on schedule and will open to the campus community this fall. The student funded facility will feature a three court gym, multi-activity court, six lane lap pool, whirlpool, weight and fitness training areas, elevated jogging track, and a rock climbing wall.

The new center will not only provide high quality recreational facilities, but will also create a south campus gathering and meeting space for social and educational pursuits.

• Contact: Gil Aiken, Project Manager, 650-7689

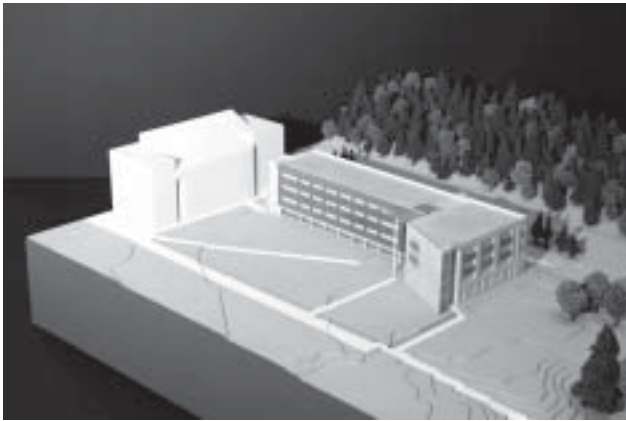


## Campus Infrastructure Development Project, Phase 1-D

The landscaping and circulation components adjacent to the Campus Recreation Center will begin construction in October and be complete by January 2004. The project site includes the main entry area on the east side of the Campus Recreation Center down to the existing temporary access road and south to the intersection of Bill McDonald Parkway and West College Way.

A new fifteen foot wide north/south pedestrian pathway will run along the front of the center and open into a concrete plaza lined with native vegetation.

# In the Works



Communications Facility - Southwest Elevation



Communications Facility - Northeast Elevation



Miller Hall

James Fitzgerald's "Rain Forest" sculpture, once located near Haggard Hall, will be installed directly north of the plaza in a reflecting pool with granite waterfall weir and seating.

Temporary pedestrian and emergency vehicle access routes, indicated by temporary signs and fencing, will be provided to the newly opened Campus Recreation Center until the landscape and circulation work is complete.

There will be construction noise, increased construction vehicle activity, and a minimum amount of dust due to the construction time frame.

• Contact: David Willett, Project Manager, 650-6813

## Communications Facility

Just south of Environmental Studies, the new Communications Facility continues to take shape. When complete in spring 2004, the campus' newest academic facility will house the departments of Communication, Computer Science, Journalism and Physics, as well as general university classrooms and computer labs.

Construction impacts will continue to involve noise and localized dust, and heavy equipment and truck traffic along East College Way. A temporary wall is already in place between Environmental Studies and the construction site to help buffer the lower classrooms in Environmental Studies from construction noise. Contractors will continue to use the west side of parking lot 31G, but there will be no other impacts to parking or circulation.

Watch the construction action via the webcam at <http://newcomm.cs.wvu.edu/view/view.shtml>.

• Contact: Ed Simpson, Project Manager, 650-3231

## Miller Hall Tile Roof Replacement

From mid-June until September 2003, the 60 year old mission tile roofing on the oldest section of Miller Hall will be replaced. The new mission tile will duplicate, as much as possible, the character, patina and visual qualities of the original tile that is beyond its useful life and is causing safety and maintenance issues.

Construction noise, dust, and storage of materials will take place in and around the east side of Miller Hall. No offices or classrooms will be affected and all exits will remain open. For the public's safety and to provide contractor access, parking adjacent to the east side of the building will be removed during construction. The reserved Media Services stall will be temporarily relocated.

• Contact: David Willett, Project Manager, 650-6813

# In the Works

---

## Watershed Studies Lab Renovation, Environmental Studies

The Watershed Studies Lab on the fifth floor of Environmental Studies will be renovated over summer 2003 (mid-June through mid-September) with new counter tops, cabinets and minor electrical upgrades.

Bid alternates include a new fume hood and new chemical resistant flooring. These items may be included in the project contingent on available funding.

Because all work will be limited to rooms 500B, 501 and 503, noise and dust will be relatively contained. The contractors will be assigned several parking stalls in the gravel lot by the Biology Greenhouse and will make limited use of the freight elevator in the building. No other circulation routes will be impacted.

- Contact: Gil Aiken, Project Manager, 650-7689



Environmental Studies

---

## Old Main Remodels, Suites 240-270, 380 and 530

To improve space efficiency and replace worn finishes, suites 240-270, and 380 in Old Main will be remodeled with new office layouts, updated carpet and paint, and improved ventilation, electrical, data, and lighting systems. Suite 530 will be renovated for the Dean of the Graduate School and Faculty Research (currently housed in suite 430) with new casework, cabinets, carpet, paint, and window coverings, as well as improved ventilation, electrical, data, and lighting systems. (Suite 430 will be renovated in the future for use by another department.)

Demolition will create noise and dust. Painting will create some non-toxic odors. Both dust and odor impacts will be mitigated with dust partitions and negative-air machines.

The contractor will set up materials storage space on the north end of the parking lot behind Old Main. This area will be fenced. No parking will be displaced and no other circulation impacts are anticipated.

This project will begin in late July and be complete in early November 2003.

- Contact: Sherrie White, Project Manager, 650-6519



Old Main

---

## Birnam Wood Apartments Renovation

During the next two summers, the Birnam Wood Apartments will be renovated. Phase One will occur in summer 2003 and includes Stack 4 and the lounge. Phase Two will occur in summer 2004, and includes Stacks 3, 5 and 7. Stacks 1, 2 and 6 will be addressed in the future contingent on available funding.



Birnam Wood

---

# In the Works

The renovation will abate asbestos wall texture; upgrade interior finishes, cabinets, ventilation and electrical systems; add residential sprinkler systems; and bring high-speed data lines and improved telephone service to the apartments. Windows will be replaced with more energy efficient windows and the patio doors will be replaced. The project is intended to add twenty more years of life to the apartments.

Excavation will occur in and around the parking lots during Phase One to lay piping and wiring to the buildings. Some of the parking lot will be fenced off for contractors' use during both phases. Dust and noise will occur, mostly within the buildings, which will be emptied and unoccupied. However, the surrounding buildings will be occupied during both phases.

During excavation in the early part of Phase One, some pedestrian paths may be temporarily closed off. Vehicular access will remain open through the upper part of the site. However, some of the parking areas will be impacted during construction. Installation of new city required fire hydrants will take one or two parking spaces, which will be replaced in other parts of the lot.

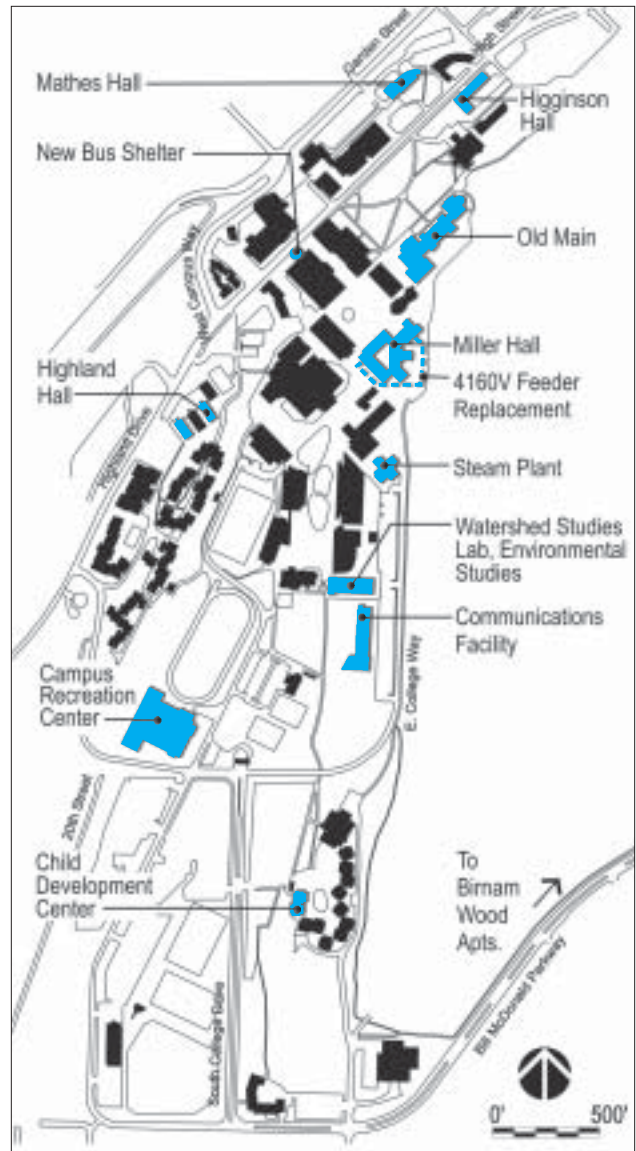
- Contact: Sherrie White, Project Manager, 650-6519

## Highland Hall Renovation, Phase Two

In summer 2002 the Highland Hall Stack 2 was renovated as Phase One of the Highland Hall Seismic and Utilities Upgrade project. Under Phase Two, Stacks 1 and 3 will be renovated in summer 2003 while the buildings are unoccupied. The renovation will address seismic and accessibility concerns and replace ventilation, domestic water supply and waste systems, as well as electrical and telecommunications systems. Modifications will be made to the hot water heating systems and controls. Interior facelifts include new carpet, paint, cabinet modifications, new interior bathroom doors, and other bathroom improvements. New windows and entry doors will also be installed.

The lounge will be used for furniture storage and will be closed for the duration of the project. Demolition noise will occur in early summer but will be kept to business hours only. General construction work may occur on weekends and holidays throughout the project. The contractor will use the parking lot west of Highland Hall (15R) for materials and storage. Delivery vehicles and contractors will use the northernmost entry to the Ridgeway/Highland Hall complex off High Street, so please use alternate routes.

- Contact: Sherrie White, Project Manager, 650-6519



Campus Improvements



Highland Hall

# In the Works



Child Development Center

---

## Child Development Center Improvements

The patios on the courtyard side of the Child Development Center (Fairhaven Stack 12) will be covered with a clear plastic material to allow children access to an outdoor play area on rainy days. Construction on the patio covers will begin in mid-June. Because the Center will be in operation, the contractor will follow safety and operation procedures to minimize impacts to occupants. Minor noise and dust are expected. Circulation and parking should not be affected.

During the break starting on August 25<sup>th</sup>, the worn flooring at the Center will be replaced with a new specialty, padded floor to address safety and sanitation concerns. The kitchen floor will be replaced as well. Construction will be complete before the start of fall quarter 2003.

- Contact: David Willett, Project Manager, 650-6813



Mathes Hall

---

## Housing Improvements

Several projects will take place at Mathes Hall while the building is vacant for the summer. The exterior brick renovation that was partially complete last summer, will be finalized with the renovation of the remaining northwest exterior. To provide better seismic performance and accommodate thermal expansion, new expansion joints and additional masonry veneer anchors will be installed. As a regular maintenance item, the bricks will also be cleaned and sealed. There will be minor noise associated with saw cutting the expansion joints and installing anchors. The contractor will be assigned an area for staging on the northwest side of the building.

- Contact: Gil Aiken, Project Manager, 650-7689

Interior work at Mathes Hall will include the replacement of worn carpeting in the corridors and lounges, and the complete upgrade of the elevators, which will address both safety and maintenance concerns.

- Contact: David Willett, Project Manager, 650-6813

The existing internet data system in Higginson Hall is inadequate. Because a complete renovation of Higginson Hall is anticipated in the next biennium, the data system will undergo an interim upgrade to provide occupants with minimum internet access until the renovation occurs. The internet data upgrade will allow improved internet access from all residential rooms. In order to minimize the noise impacts from core drilling, work will be planned around summer occupancy schedules.

- Contact: John Matthews, Project Manager, 650-7366



Higginson Hall

---

# In the Works

## Replacement of 4160V Feeders

The 4160V Replacement Feeder Project is part of a process to replace existing electrical cables that are over forty years old. Construction will occur from mid-June through the end of October 2003 and will be located in the area directly east of Miller Hall.

The following routes will be periodically blocked for trenching: the north/south brick walkway between Wilson Library and Humanities (one week), East College Way behind Miller Hall (two weekends), and the ramp and walkway south of Miller Hall (two weeks). Actual closure dates will be announced at a later date.

Parking behind Miller Hall will be unavailable for approximately two weeks.

- Contact: Jeff Maurer, Project Manager, 650-3260



Walkway between Wilson Library and Humanities

## Emergency Phones & Exterior Lighting

To address safety concerns in various campus locations, new emergency phones and exterior pedestrian lighting will be installed during summer and possibly extending into fall quarter 2003.

Two commercially manufactured emergency phones will be installed at either end of the pedestrian tunnel under East College Way. These phones are more cost effective than the current campus standard and are visible without being intrusive.

Exterior lighting will be installed in the following areas: west and north sides of Fine Arts, east side of Arntzen Hall, pool entrance to Carver Gym, pathways between Buchanan Towers and Fairhaven, between the Baseball Service Bunker and C parking lots, and adjacent to the Aerobics Center.

- Contact: John Matthews, Project Manager, 650-7366

## Bus Shelter

Contingent on available funding, a new covered bus shelter will be installed west of Haggard Hall. The shelter has windscreens on three sides, posted route maps, is vandal resistant, has low maintenance lighting, plus an ADA (American with Disabilities Act) route. The design complements the scale of Haggard Hall. The modular concrete and steel design allows for future expansion.

During construction, the sidewalk will be closed. Construction noise will include welding, sawcutting concrete and placing the new concrete slab. There will be a permanent loss of eight parking spaces.

- Contact: Barbara Alten, Project Manager, 650-2103



Drawing by Barbara Alten

Proposed Bus Shelter (including additive alternates)