

Mounting Instructions

All entries in Category A, Unaltered Images, must be mounted according to these guidelines. Entries in Category B, Altered Images, may be mounted according to these guidelines but it is not required.

Supplies included with entry packet:

2 sheets of glossy photo paper

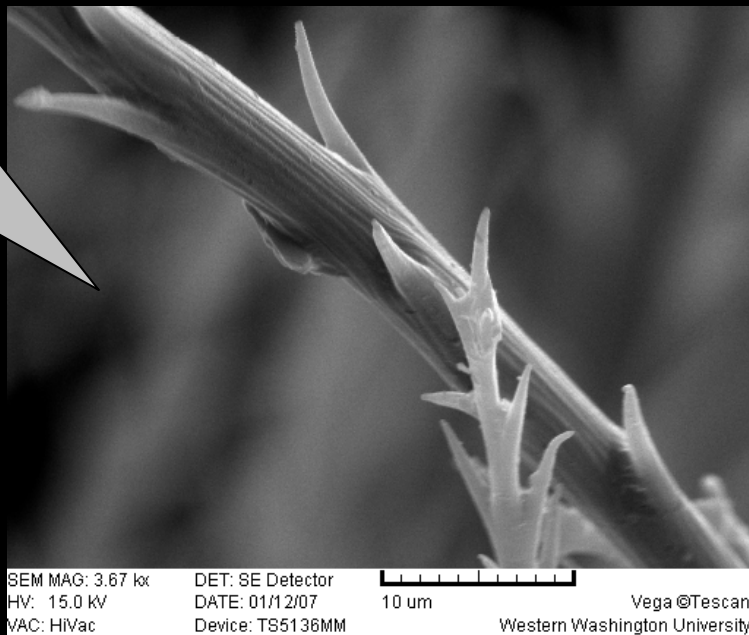
2 sheets of white cardstock paper for printing the description of your work

1, 15" x 20" black mounting board

Mount picture above image description.

Your image should be printed in the landscape orientation.

Print image on the photo paper provided.



Set all page margins to 0.25 inches.

You may cut the length of the sheet to fit the text. You must keep the width 11".

Print description on the cardstock provided.

Hairs on a House Fly
Erin Macri
Scientific Technical Services

This image was taken as part of my work at Scientific Technical Services. The image shows the fine detail of hairs on the head of a fly.....