



Western Washington University (WWU) makes these documents available on an "as is" basis. All warranties and representations of any kind with regard to said documents are disclaimed, including the implied warranties of merchantability and fitness for a particular use. WWU does not warrant the documents against deficiencies of any kind.



**ACADEMIC INSTRUCTIONAL CENTER EAST**  
FIRST LEVEL

Date Revised: 03/11/2016 Last Sync With FAMIS: 09/22/2015

Building/Zone **AI**  
Floor # **1**



Western Washington University (WWU) makes these documents available on an "as is" basis. All warranties and representations of any kind with regard to said documents are disclaimed, including the implied warranties of merchantability and fitness for a particular use. WWU does not warrant the documents against deficiencies of any kind.



TRUE NORTH



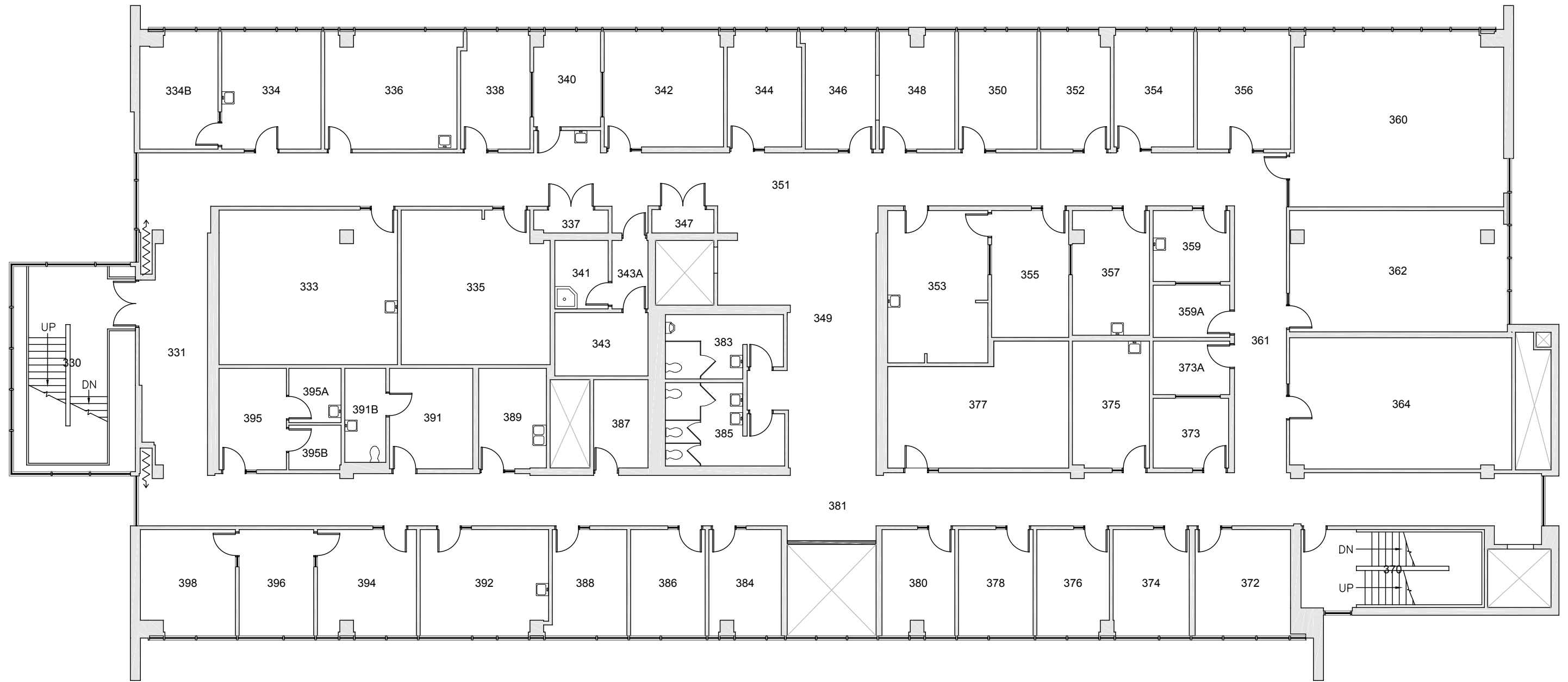
# ACADEMIC INSTRUCTIONAL CENTER EAST

## SECOND LEVEL

Date Revised: 03/11/2016

Last Sync With FAMIS: 09/22/2015

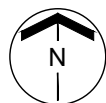
Building/Zone: **AI**  
Floor #: **2**



Western Washington University (WWU) makes these documents available on an "as is" basis. All warranties and representations of any kind with regard to said documents are disclaimed, including the implied warranties of merchantability and fitness for a particular use. WWU does not warrant the documents against deficiencies of any kind.



TRUE NORTH



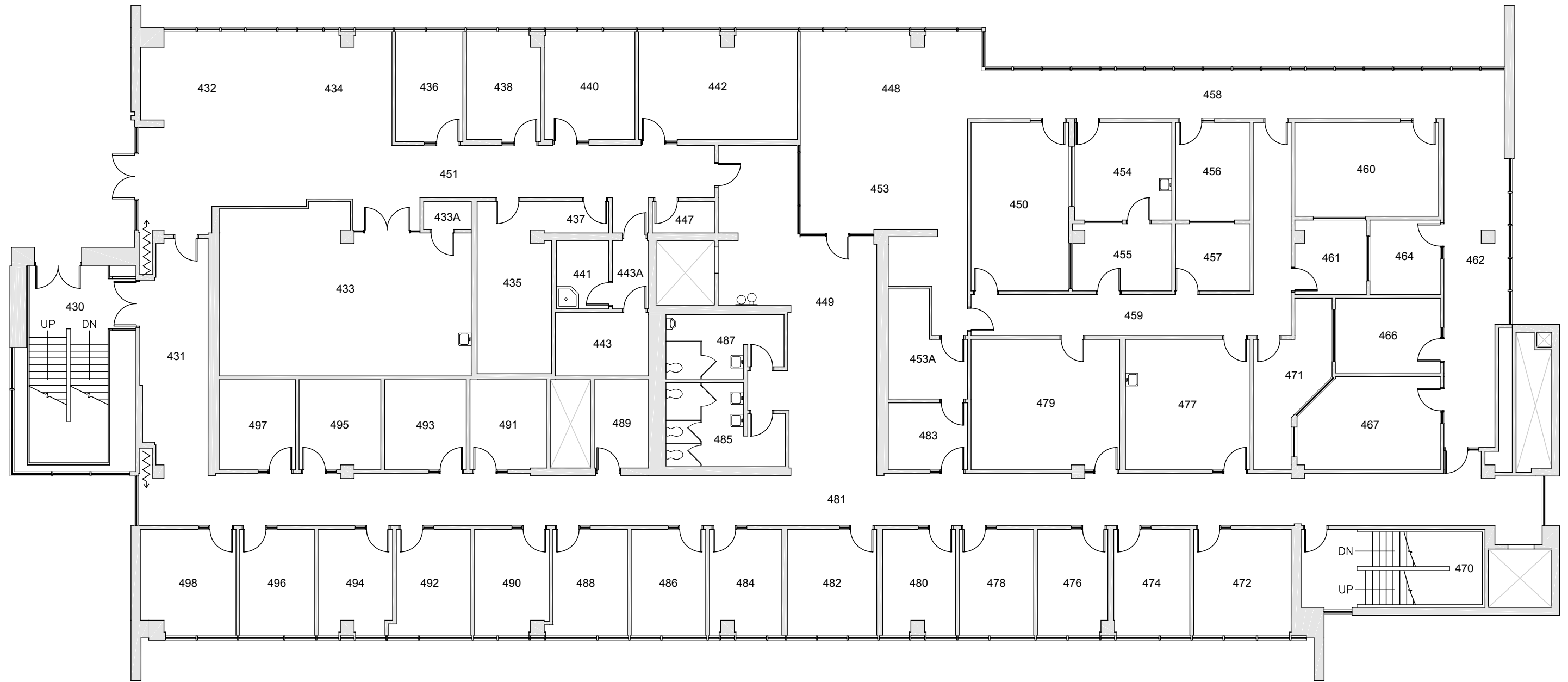
# ACADEMIC INSTRUCTIONAL CENTER EAST

## THIRD LEVEL

Date Revised: 03/11/2016

Last Sync With FAMIS: 09/22/2015

Building/Zone  
**AI**  
Floor #  
**3**



Western Washington University (WWU) makes these documents available on an "as is" basis. All warranties and representations of any kind with regard to said documents are disclaimed, including the implied warranties of merchantability and fitness for a particular use. WWU does not warrant the documents against deficiencies of any kind.



TRUE NORTH



# ACADEMIC INSTRUCTIONAL CENTER EAST

## FOURTH LEVEL

Date Revised: 03/11/2016

Last Sync With FAMIS: 09/22/2015

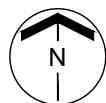
Building/Zone	<b>AI</b>
Floor #	<b>4</b>



Western Washington University (WWU) makes these documents available on an "as is" basis. All warranties and representations of any kind with regard to said documents are disclaimed, including the implied warranties of merchantability and fitness for a particular use. WWU does not warrant the documents against deficiencies of any kind.



TRUE NORTH



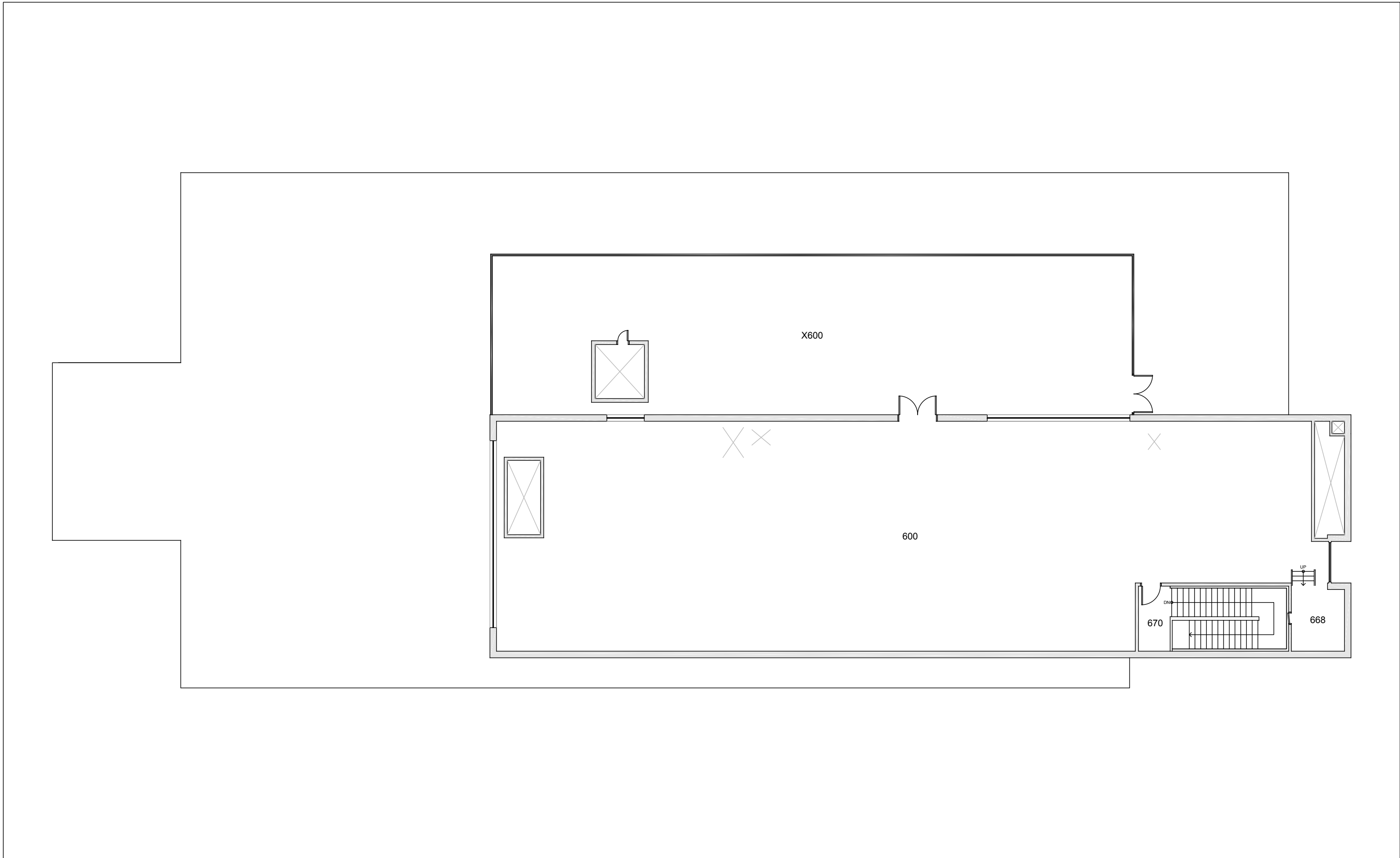
# ACADEMIC INSTRUCTIONAL CENTER EAST

## FIFTH LEVEL

Date Revised: 03/11/2016

Last Sync With FAMIS: 09/22/2015

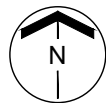
Building/Zone  
**AI**  
Floor #  
**5**



Western Washington University (WWU) makes these documents available on an "as is" basis. All warranties and representations of any kind with regard to said documents are disclaimed, including the implied warranties of merchantability and fitness for a particular use. WWU does not warrant the documents against deficiencies of any kind.



TRUE NORTH



# ACADEMIC INSTRUCTIONAL CENTER EAST

PENTHOUSE / ROOF

Date Revised: 03/11/2016

Last Sync With FAMIS: 09/22/2015

Building/Zone	<b>AI</b>
Floor #	<b>6</b>