

Western Washington University (WWU) makes these documents available on an "as is" basis. All warranties and representations of any kind with regard to said documents are disclaimed, including the implied warranties of merchantability and fitness for a particular use. WWU does not warrant the documents against deficiencies of any kind.



TRUE NORTH

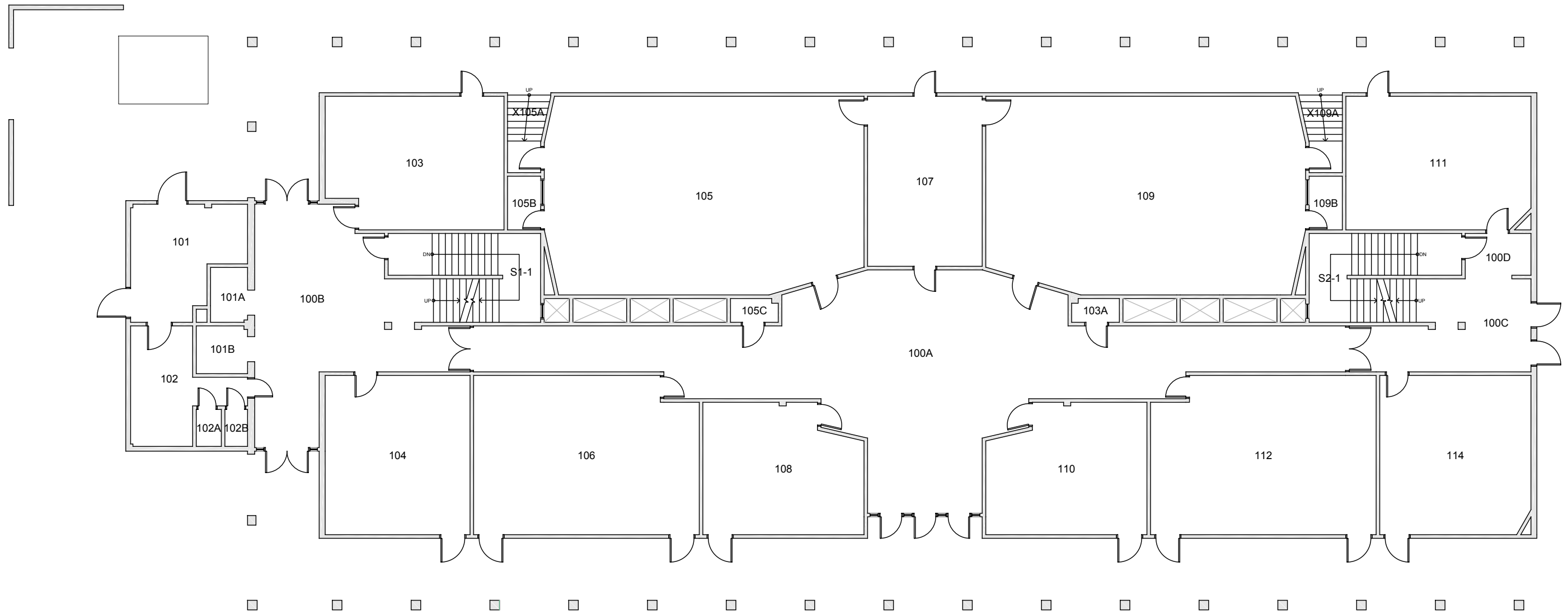


Date Revised: 03/11/2016

BOND HALL BASEMENT

Last Sync With FAMIS: 03/10/2015

Building/Zone
BH
Floor #
B



Western Washington University (WWU) makes these documents available on an "as is" basis. All warranties and representations of any kind with regard to said documents are disclaimed, including the implied warranties of merchantability and fitness for a particular use. WWU does not warrant the documents against deficiencies of any kind.



TRUE NORTH



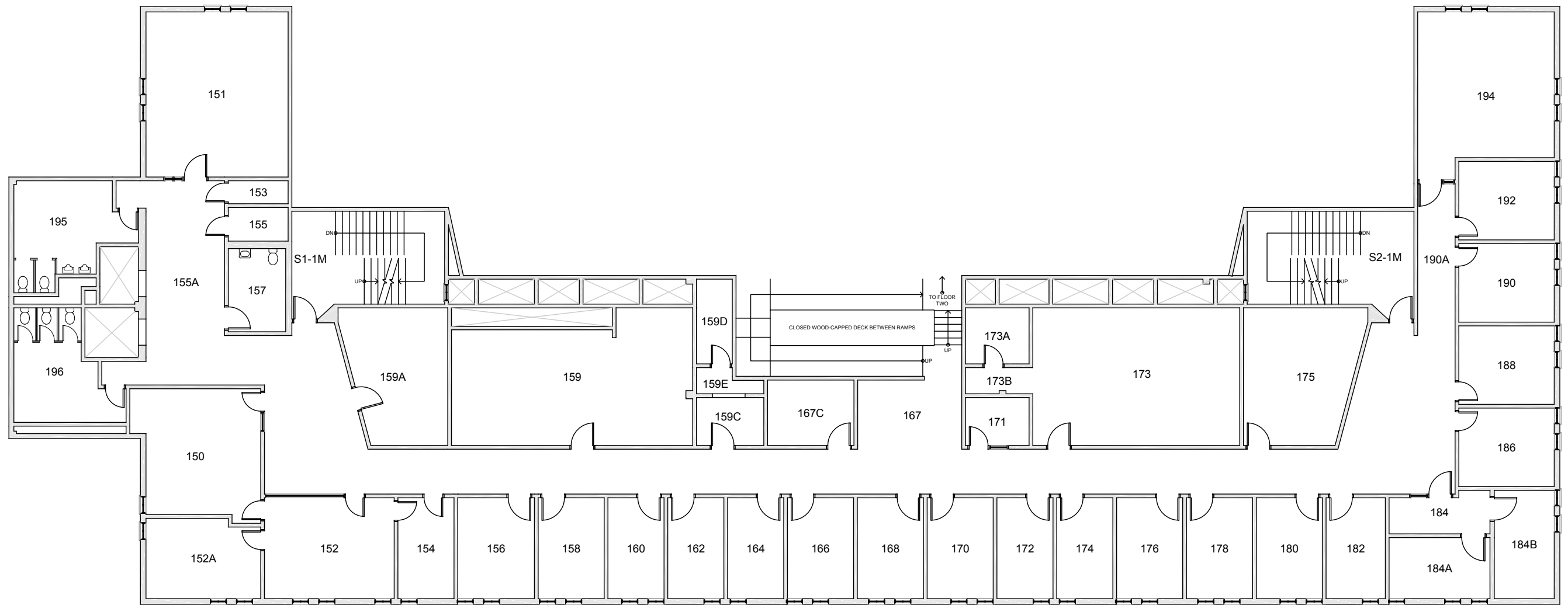
Date Revised: 03/11/2016

BOND HALL

FLOOR 1

Last Sync With FAMIS: 03/10/2015

Building/Zone
BH
Floor #
1



Western Washington University (WWU) makes these documents available on an "as is" basis. All warranties and representations of any kind with regard to said documents are disclaimed, including the implied warranties of merchantability and fitness for a particular use. WWU does not warrant the documents against deficiencies of any kind.



TRUE NORTH

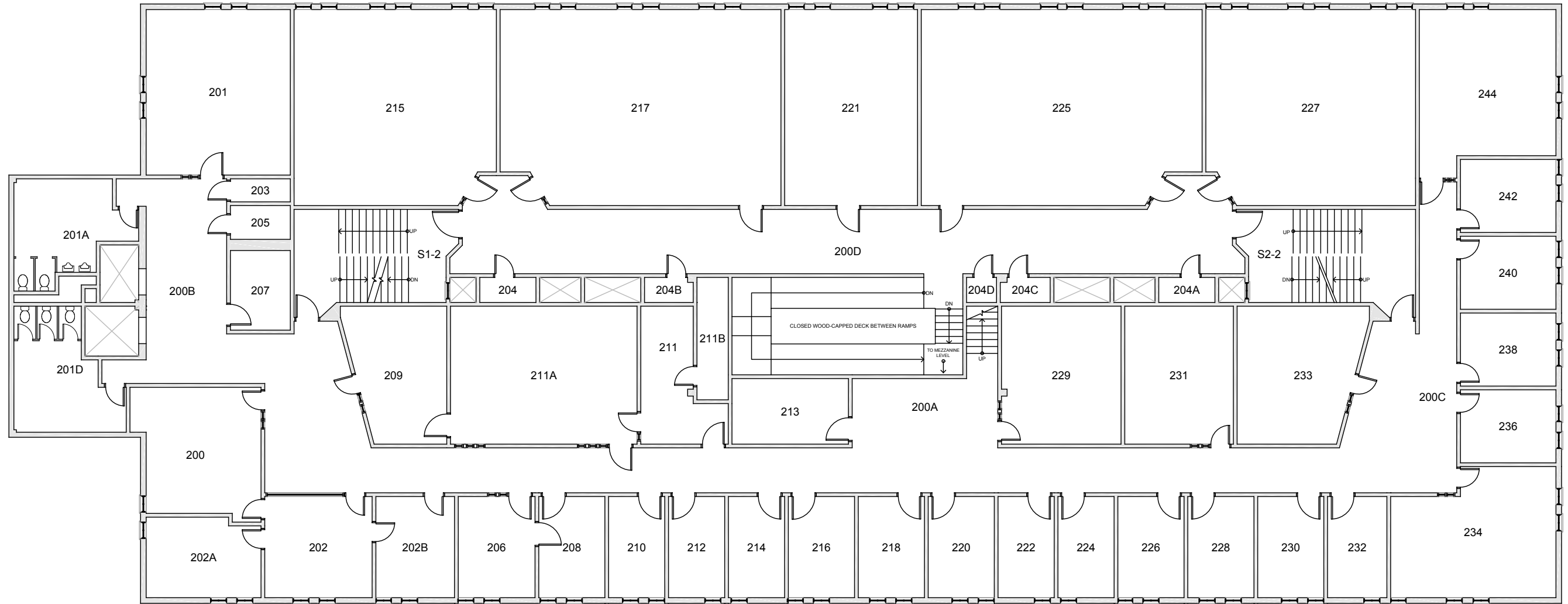


Date Revised: 03/11/2016

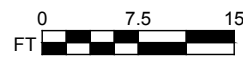
BOND HALL FLOOR 1 MEZZANINE

Last Sync With FAMIS: 03/10/2015

Building/Zone
BH
Floor #
1M



Western Washington University (WWU) makes these documents available on an "as is" basis. All warranties and representations of any kind with regard to said documents are disclaimed, including the implied warranties of merchantability and fitness for a particular use. WWU does not warrant the documents against deficiencies of any kind.



TRUE NORTH

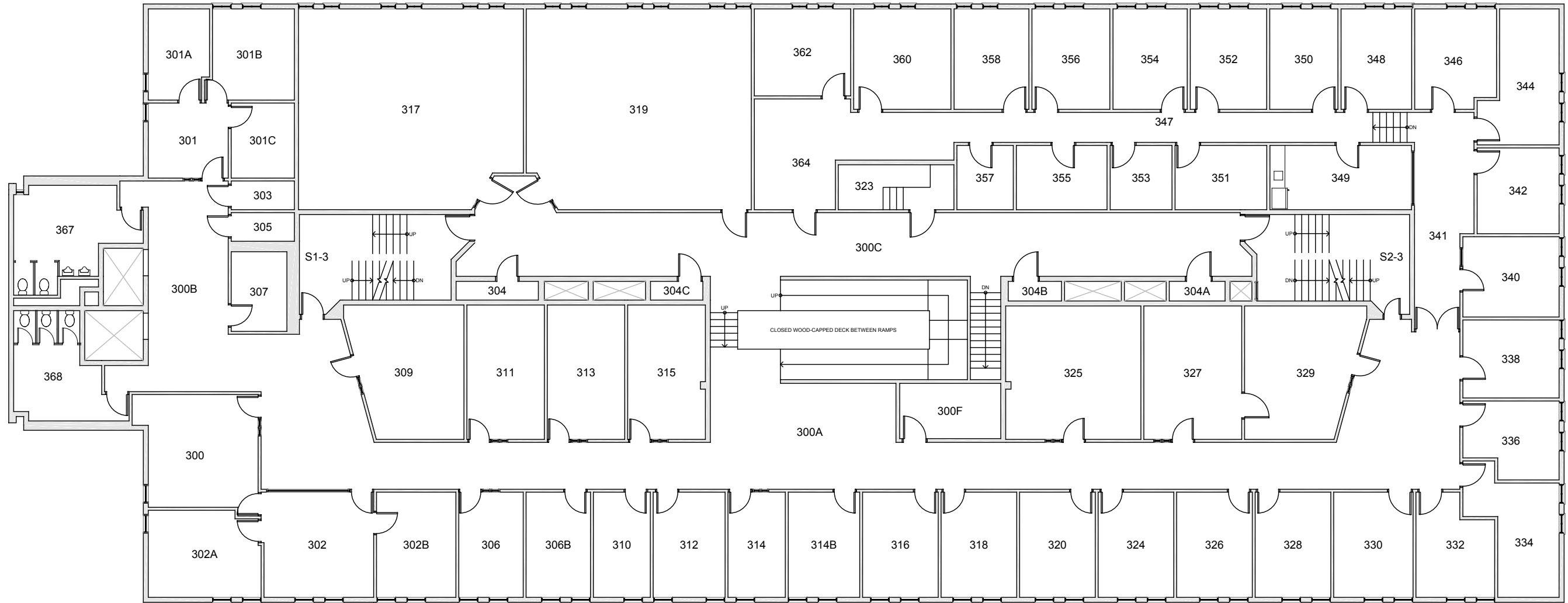


Date Revised: 03/11/2016

BOND HALL FLOOR 2

Last Sync With FAMIS: 03/10/2015

Building/Zone
BH
Floor #
2



Western Washington University (WWU) makes these documents available on an "as is" basis. All warranties and representations of any kind with regard to said documents are disclaimed, including the implied warranties of merchantability and fitness for a particular use. WWU does not warrant the documents against deficiencies of any kind.



TRUE NORTH



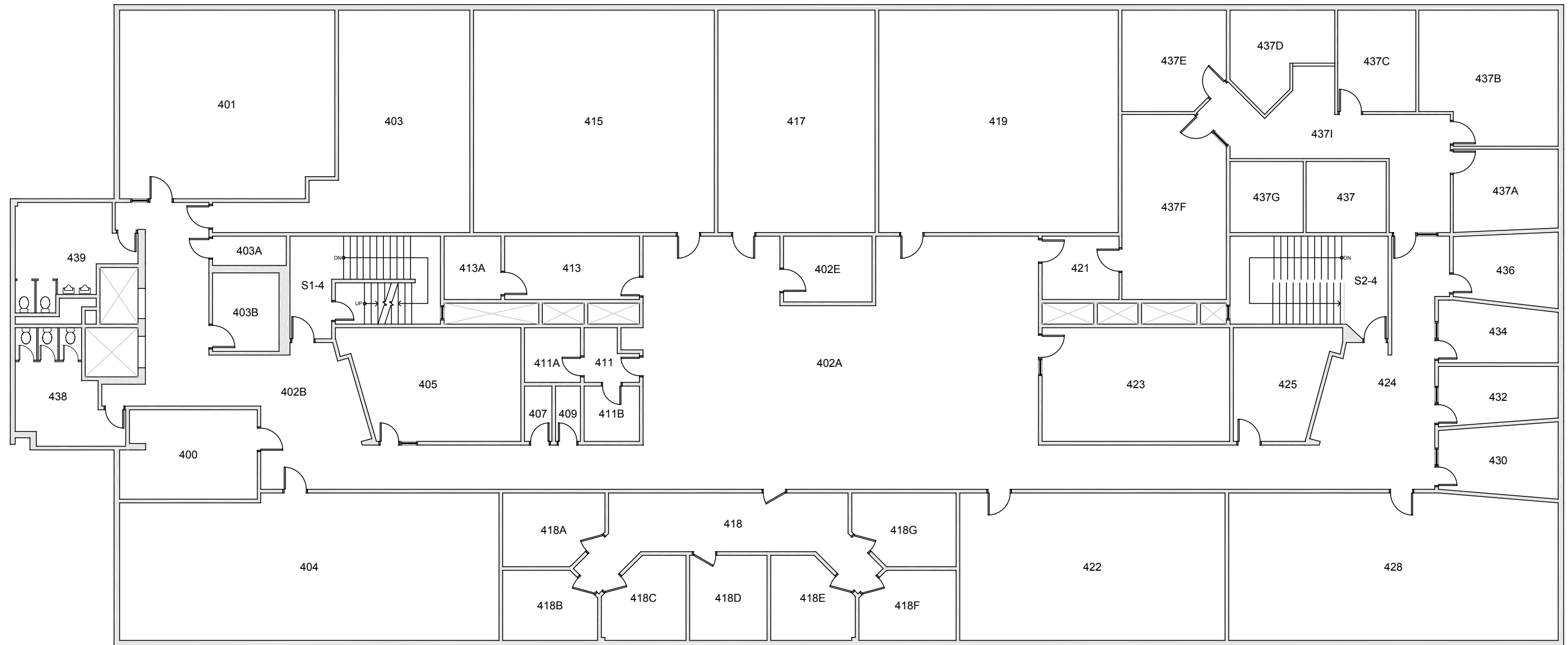
Date Revised: 03/11/2016

BOND HALL

FLOOR 3

Last Sync With FAMIS: 03/10/2015

Building/Zone
BH
Floor #
3



Western Washington University (WWU) makes these documents available on an "as is" basis. All warranties and representations of any kind with regard to said documents are disclaimed, including the implied warranties of merchantability and fitness for a particular use. WWU does not warrant the documents against deficiencies of any kind.



TRUE NORTH



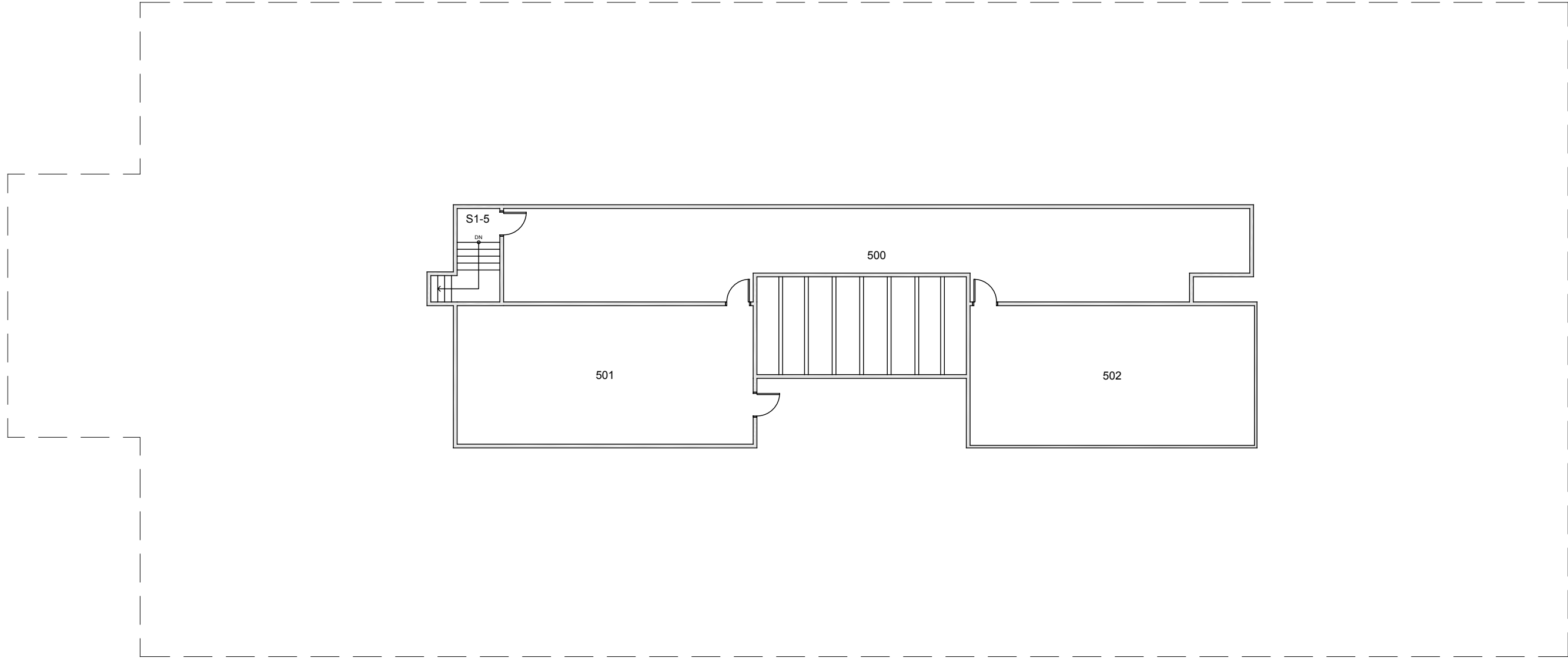
Date Revised: 03/11/2016

BOND HALL

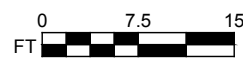
FLOOR 4

Last Sync With FAMIS: 03/10/2015

Building/Zone
BH
Floor #
4



Western Washington University (WWU) makes these documents available on an "as is" basis. All warranties and representations of any kind with regard to said documents are disclaimed, including the implied warranties of merchantability and fitness for a particular use. WWU does not warrant the documents against deficiencies of any kind.



TRUE NORTH



Date Revised: 03/11/2016

BOND HALL PENTHOUSE

Last Sync With FAMIS: 03/10/2015

Building/Zone	BH
Floor #	5