

Western Washington University (WWU) makes these documents available on an "as is" basis. All warranties and representations of any kind with regard to said documents are disclaimed, including the implied warranties of merchantability and fitness for a particular use. WWU does not warrant the documents against deficiencies of any kind.



TRUE NORTH



Date Revised: 03/11/2016

BOOKSTORE

FIFTH LEVEL

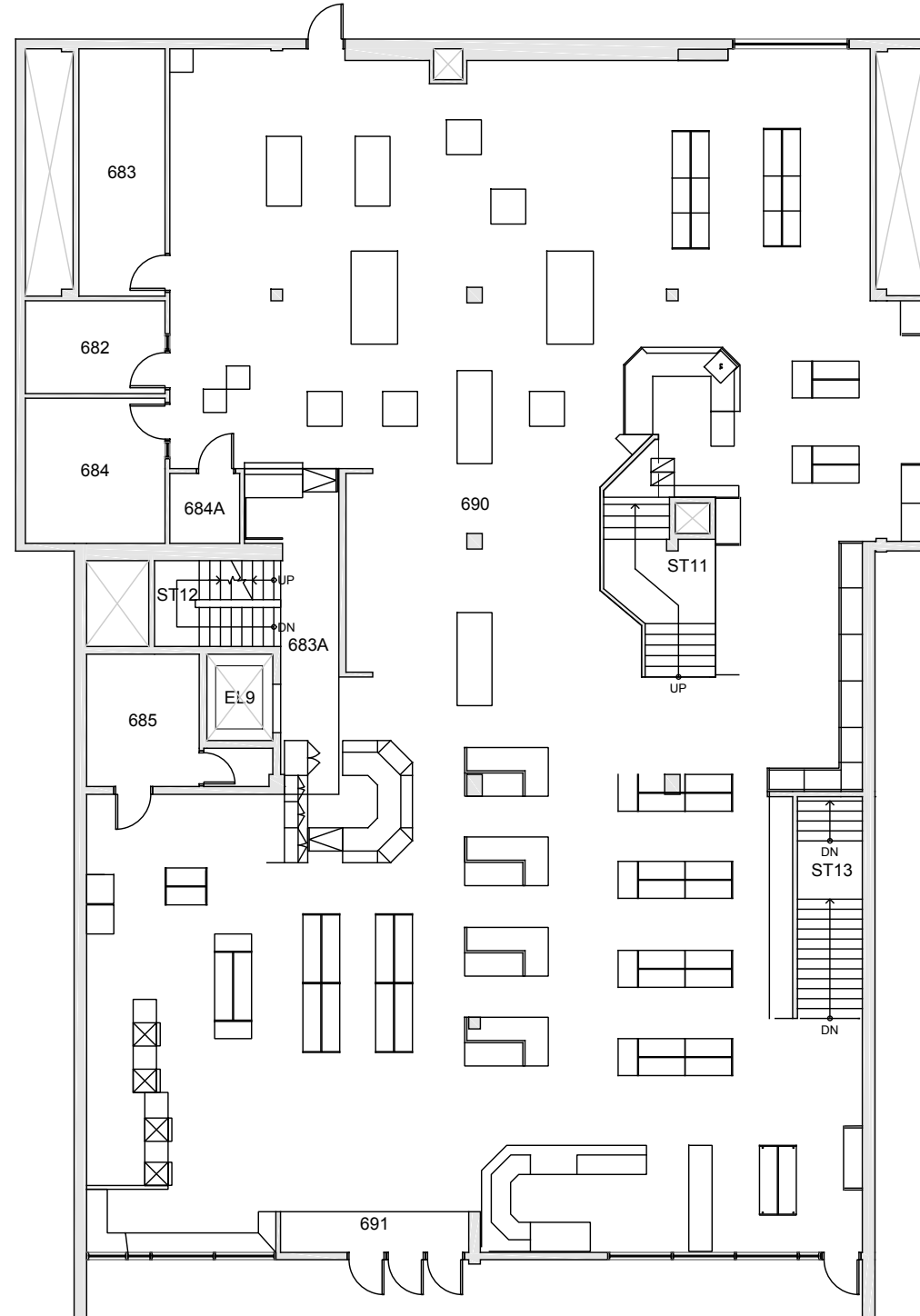
Last Sync With FAMIS: 01/11/2016

Building/Zone

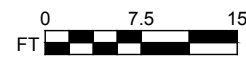
BK

Floor #

5



Western Washington University (WWU) makes these documents available on an "as is" basis. All warranties and representations of any kind with regard to said documents are disclaimed, including the implied warranties of merchantability and fitness for a particular use. WWU does not warrant the documents against deficiencies of any kind.



TRUE NORTH



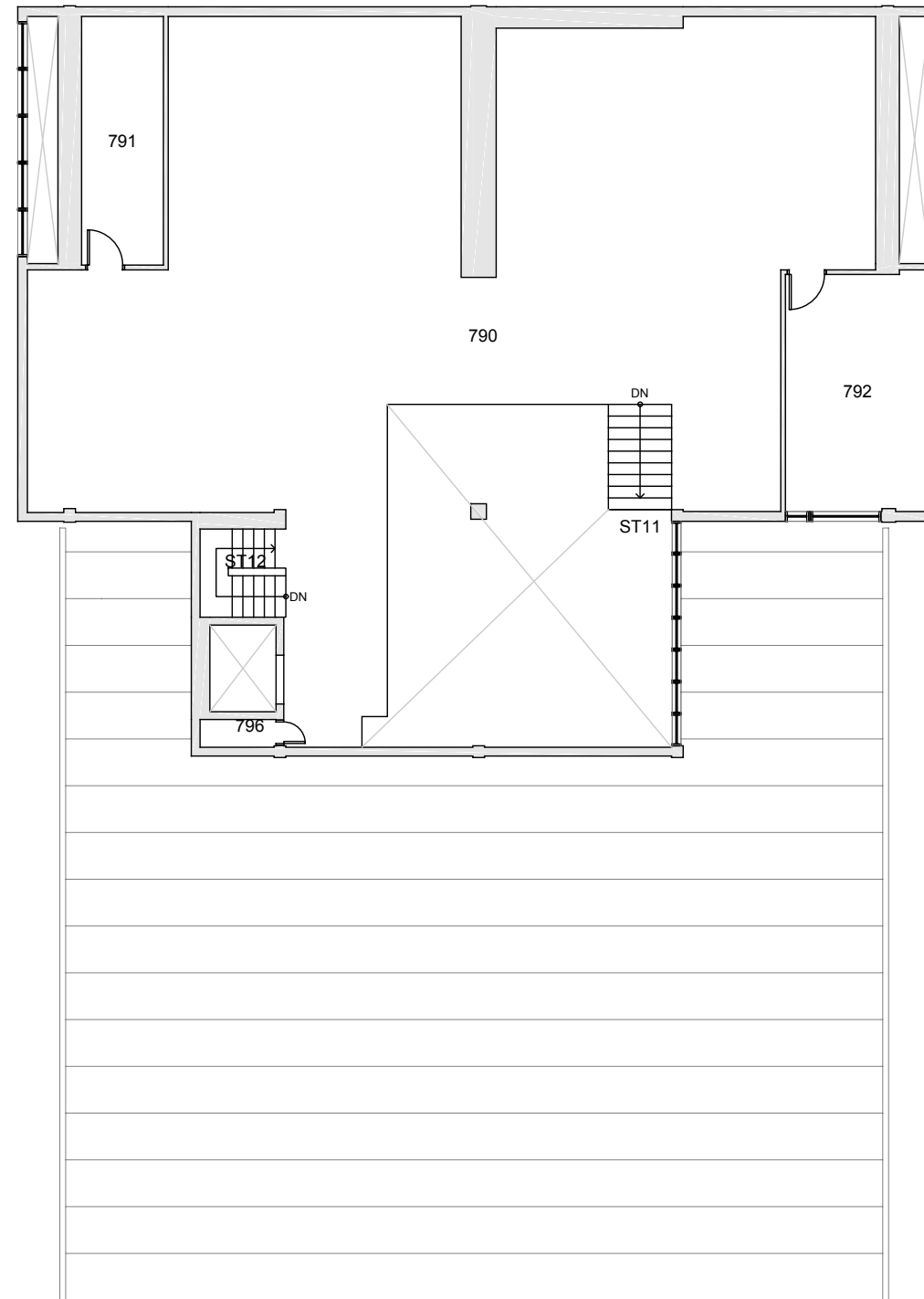
Date Revised: 03/11/2016

BOOKSTORE

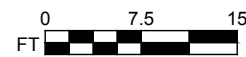
SIXTH LEVEL

Last Sync With FAMIS: 01/11/2016

Building/Zone	BK
Floor #	6



Western Washington University (WWU) makes these documents available on an "as is" basis. All warranties and representations of any kind with regard to said documents are disclaimed, including the implied warranties of merchantability and fitness for a particular use. WWU does not warrant the documents against deficiencies of any kind.



TRUE NORTH



Date Revised: 03/11/2016

BOOKSTORE

SEVENTH LEVEL

Last Sync With FAMIS: 01/11/2016

Building/Zone	BK
Floor #	7