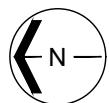


Western Washington University (WWU) makes these documents available on an "as is" basis. All warranties and representations of any kind with regard to said documents are disclaimed, including the implied warranties of merchantability and fitness for a particular use. WWU does not warrant the documents against deficiencies of any kind.



TRUE NORTH



Date Revised: 03/14/2016

ROSS ENGINEERING

FLOOR 2

Last Sync With FAMIS: 09/08/2015

Building/Zone
ET
Floor #
2