

Western Washington University (WWU) makes these documents available on an "as is" basis. All warranties and representations of any kind with regard to said documents are disclaimed, including the implied warranties of merchantability and fitness for a particular use. WWU does not warrant the documents against deficiencies of any kind.



TRUE NORTH



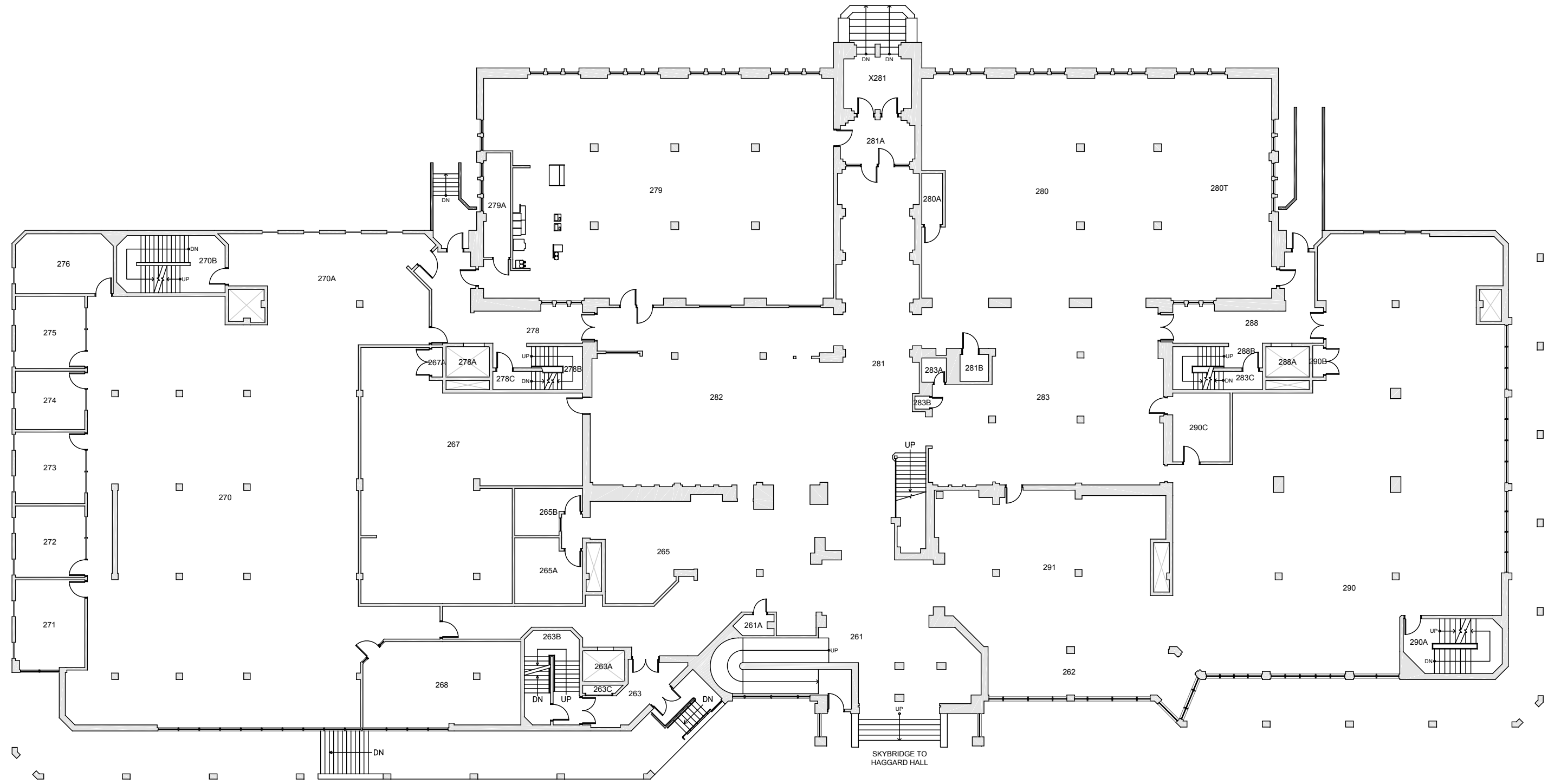
Date Revised: 03/14/2016

# WILSON LIBRARY

## FLOOR 1

Last Sync With FAMIS: 09/10/2015

Building/Zone	WL
Floor #	1



Western Washington University (WWU) makes these documents available on an "as is" basis. All warranties and representations of any kind with regard to said documents are disclaimed, including the implied warranties of merchantability and fitness for a particular use. WWU does not warrant the documents against deficiencies of any kind.



TRUE NORTH



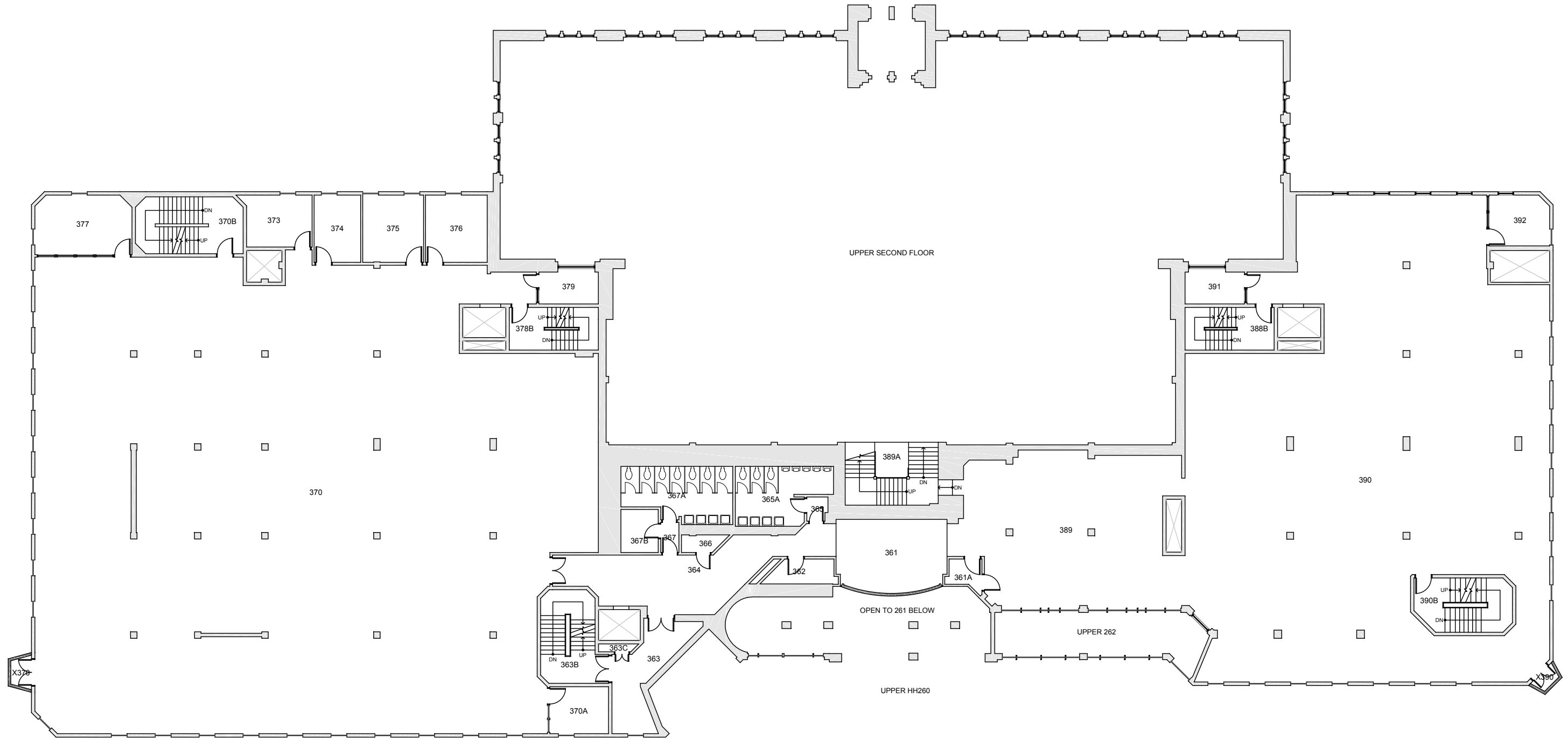
Date Revised: 03/14/2016

# WILSON LIBRARY

## FLOOR 2

Last Sync With FAMIS: 09/09/2015

Building/Zone  
**WL**  
Floor #  
**2**



Western Washington University (WWU) makes these documents available on an "as is" basis. All warranties and representations of any kind with regard to said documents are disclaimed, including the implied warranties of merchantability and fitness for a particular use. WWU does not warrant the documents against deficiencies of any kind.



TRUE NORTH



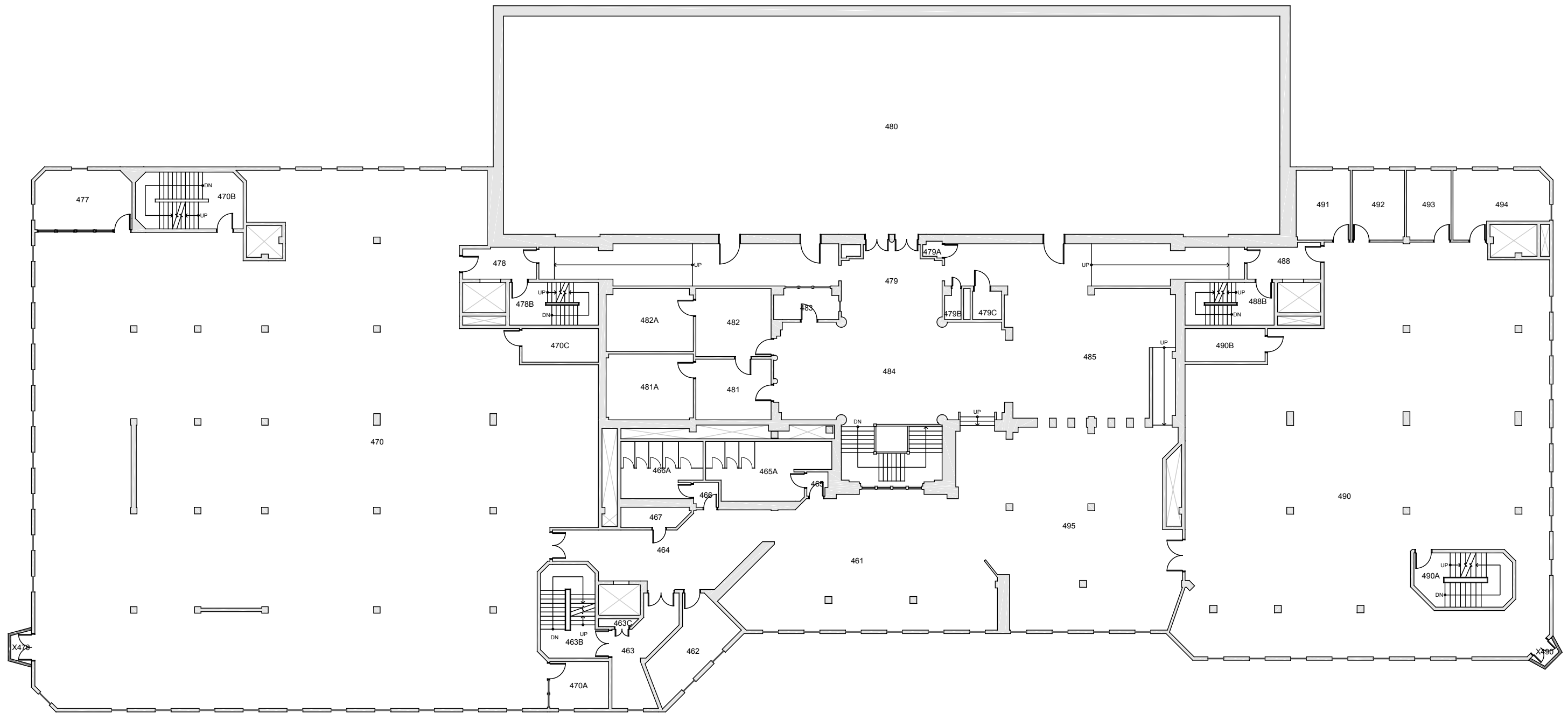
Date Revised: 03/14/2016

# WILSON LIBRARY

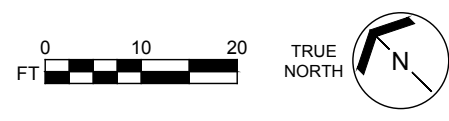
## FLOOR 3

Last Sync With FAMIS: 09/09/2015

Building/Zone  
**WL**  
Floor #  
**3**



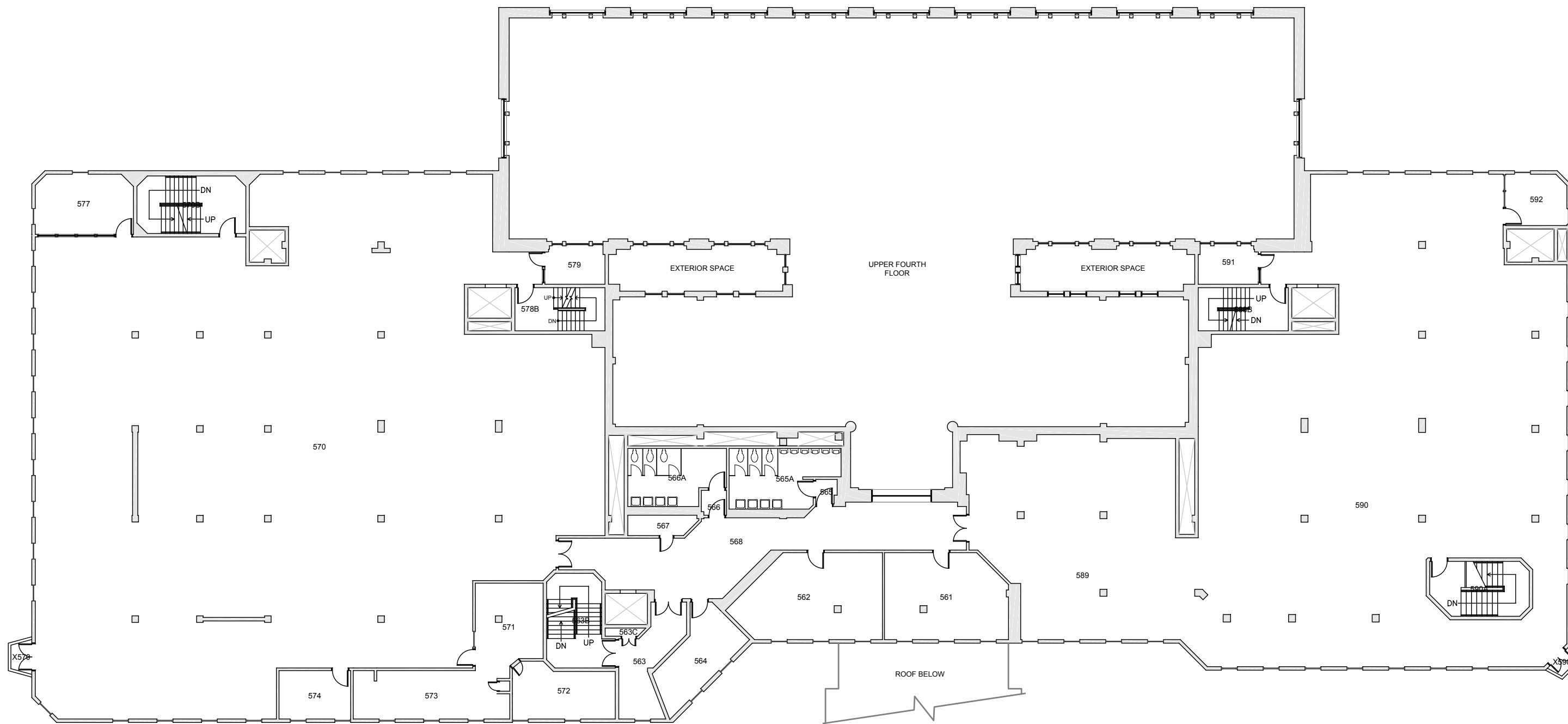
Western Washington University (WWU) makes these documents available on an "as is" basis. All warranties and representations of any kind with regard to said documents are disclaimed, including the implied warranties of merchantability and fitness for a particular use. WWU does not warrant the documents against deficiencies of any kind.



**WILSON LIBRARY**  
FLOOR 4

Date Revised: 03/14/2016 Last Sync With FAMIS: 09/09/2015

Building/Zone  
**WL**  
Floor #  
**4**



Western Washington University (WWU) makes these documents available on an "as is" basis. All warranties and representations of any kind with regard to said documents are disclaimed, including the implied warranties of merchantability and fitness for a particular use. WWU does not warrant the documents against deficiencies of any kind.



TRUE NORTH



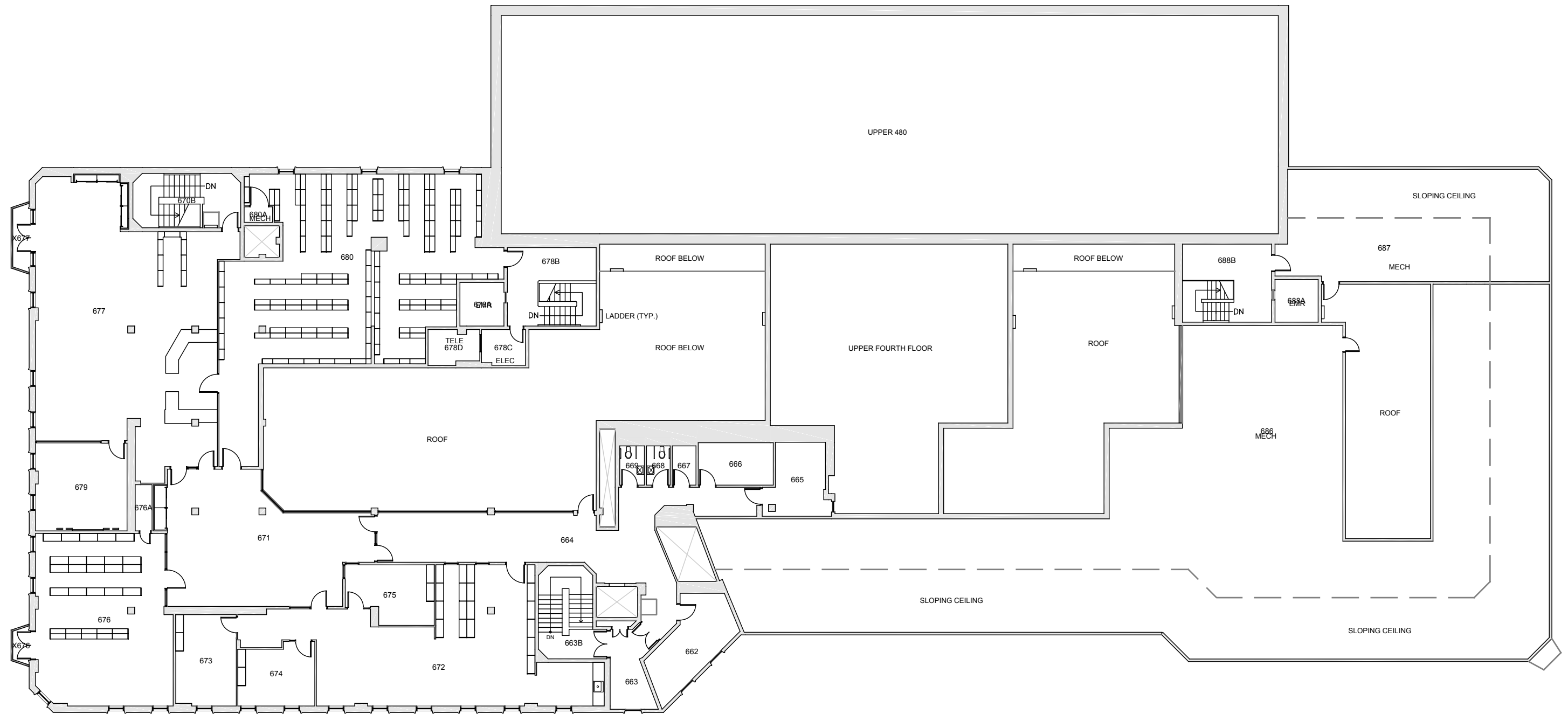
Date Revised: 03/14/2016

# WILSON LIBRARY

## FLOOR 5

Last Sync With FAMIS: 09/09/2015

Building/Zone  
**WL**  
Floor #  
**5**



Western Washington University (WWU) makes these documents available on an "as is" basis. All warranties and representations of any kind with regard to said documents are disclaimed, including the implied warranties of merchantability and fitness for a particular use. WWU does not warrant the documents against deficiencies of any kind.



TRUE NORTH



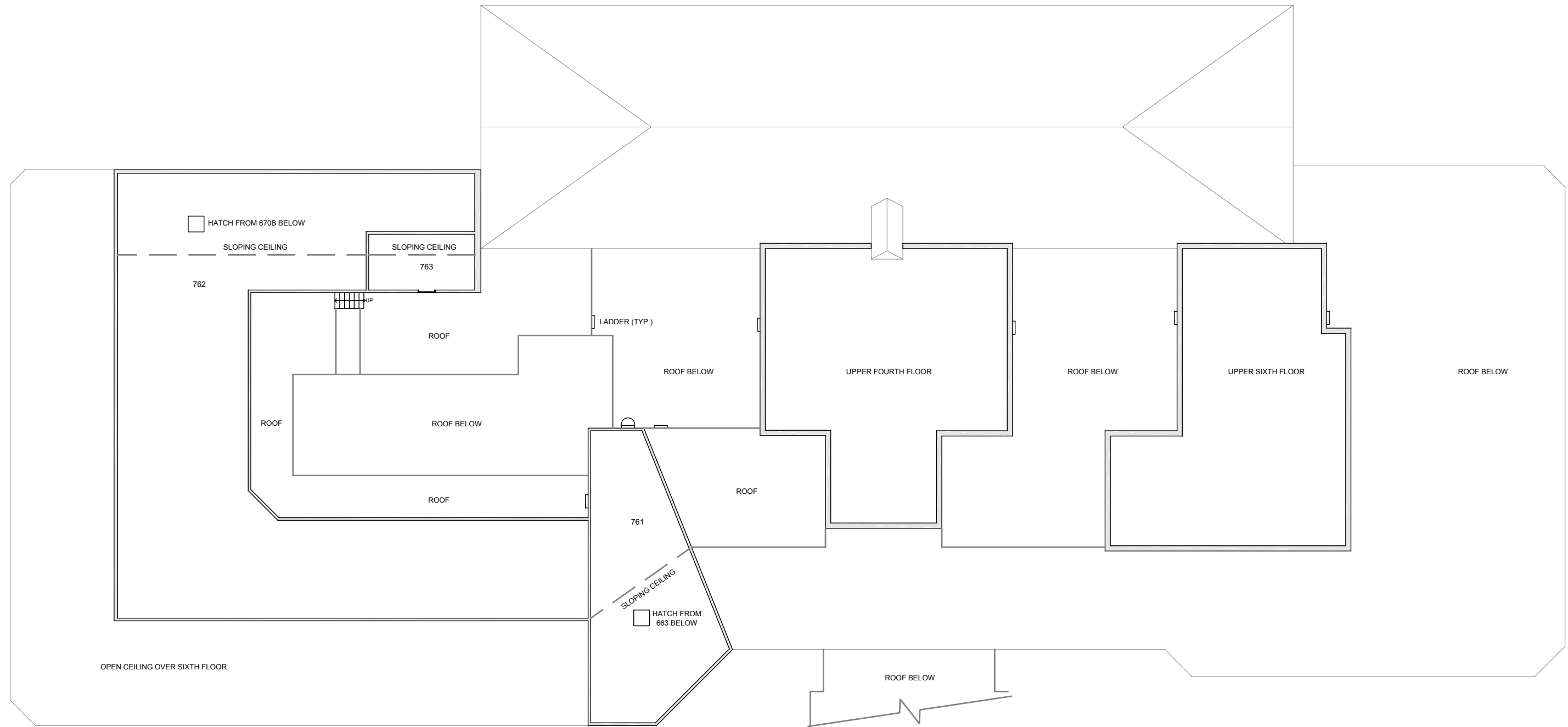
Date Revised: 03/14/2016

# WILSON LIBRARY

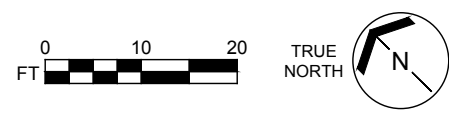
## FLOOR 6

Last Sync With FAMIS: 09/09/2015

Building/Zone	WL
Floor #	6



Western Washington University (WWU) makes these documents available on an "as is" basis. All warranties and representations of any kind with regard to said documents are disclaimed, including the implied warranties of merchantability and fitness for a particular use. WWU does not warrant the documents against deficiencies of any kind.



**WILSON LIBRARY**  
ATTIC

Date Revised: 03/14/2016 Last Sync With FAMIS: 09/09/2015

Building/Zone	<b>WL</b>
Floor #	<b>7</b>