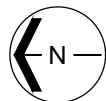


Western Washington University (WWU) makes these documents available on an "as is" basis. All warranties and representations of any kind with regard to said documents are disclaimed, including the implied warranties of merchantability and fitness for a particular use. WWU does not warrant the documents against deficiencies of any kind.



TRUE NORTH



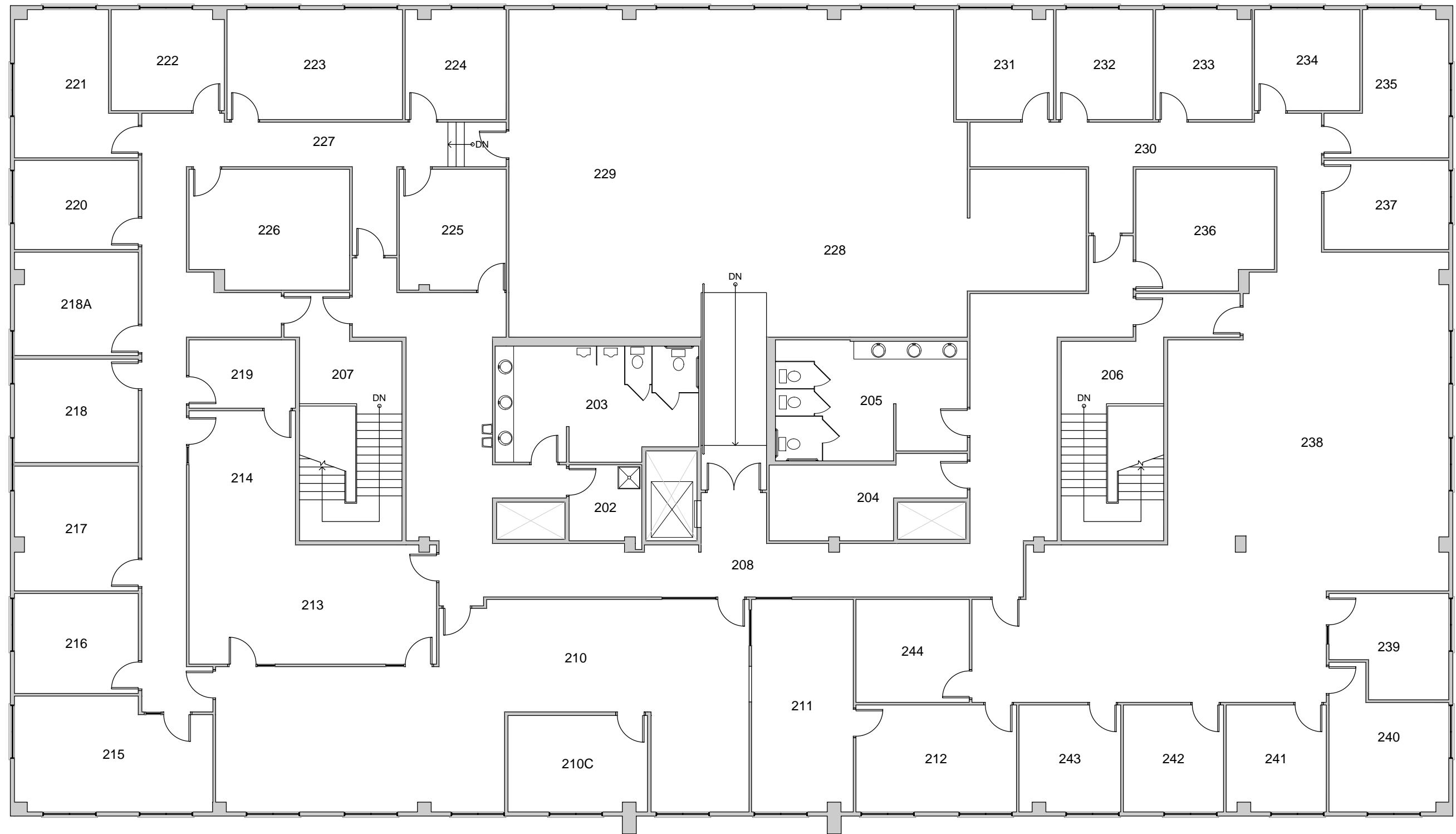
# ADMINISTRATIVE SERVICES CENTER

FLOOR 1

Date Revised: 03/07/2016

Last Sync With FAMIS: 01/21/2015

Building Zone  
**AC**  
Floor #  
**1**



**BASE FLOOR PLAN**

Western Washington University (WWU) makes these documents available on an "as is" basis. All warranties and representations of any kind with regard to said documents are disclaimed, including the implied warranties of merchantability and fitness for a particular use. WWU does not warrant the documents against deficiencies of any kind.



**ADMINISTRATIVE SERVICES CENTER**  
FLOOR 2

Last Drawing Revision: 12/12/2018

Last Sync With AIM: 12/12/2018

Building	<b>AC</b>
Floor #	<b>2</b>