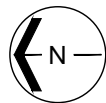


Western Washington University (WWU) makes these documents available on an "as is" basis. All warranties and representations of any kind with regard to said documents are disclaimed, including the implied warranties of merchantability and fitness for a particular use. WWU does not warrant the documents against deficiencies of any kind.



TRUE NORTH



Date Revised: 03/11/2016

ARNTZEN HALL SUB CONCOURSE

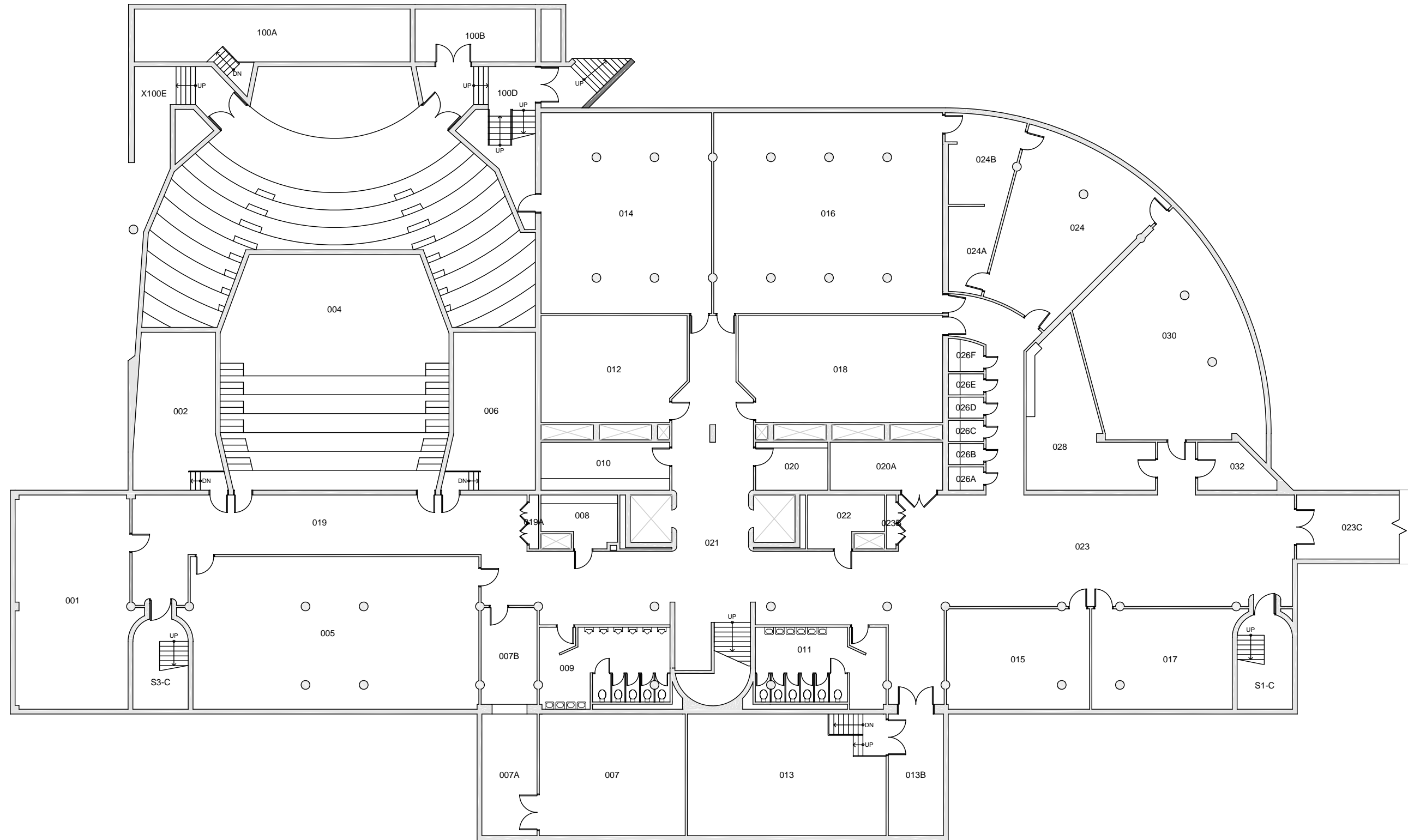
Last Sync With FAMIS: 09/21/2015

Building/Zone

AH

Floor #

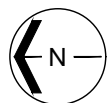
B



Western Washington University (WWU) makes these documents available on an "as is" basis. All warranties and representations of any kind with regard to said documents are disclaimed, including the implied warranties of merchantability and fitness for a particular use. WWU does not warrant the documents against deficiencies of any kind.



TRUE NORTH

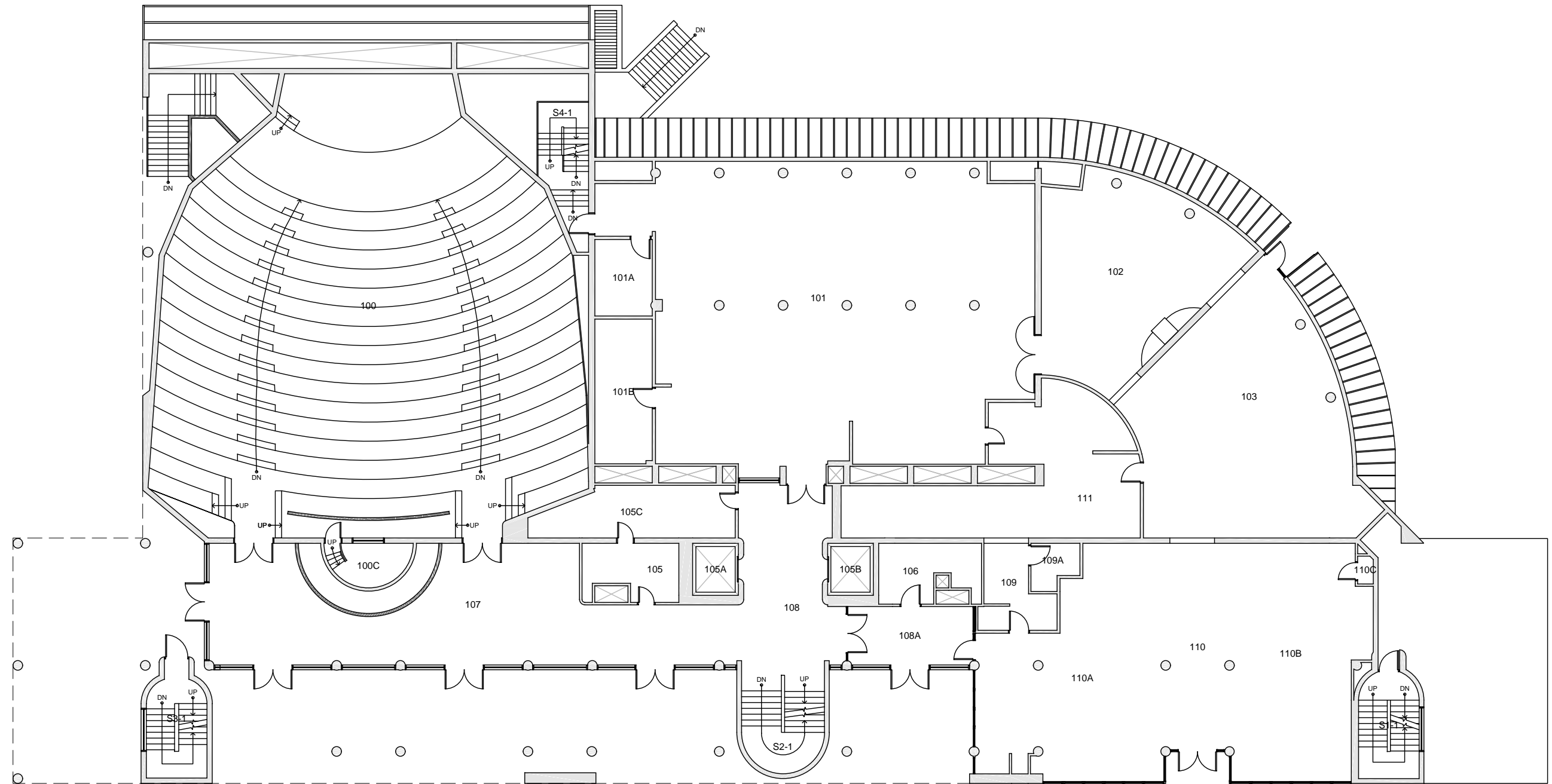


Date Revised: 03/11/2016

ARNTZEN HALL CONCOURSE

Last Sync With FAMIS: 09/21/2015

Building/Zone
AH
Floor #
C



Western Washington University (WWU) makes these documents available on an "as is" basis. All warranties and representations of any kind with regard to said documents are disclaimed, including the implied warranties of merchantability and fitness for a particular use. WWU does not warrant the documents against deficiencies of any kind.



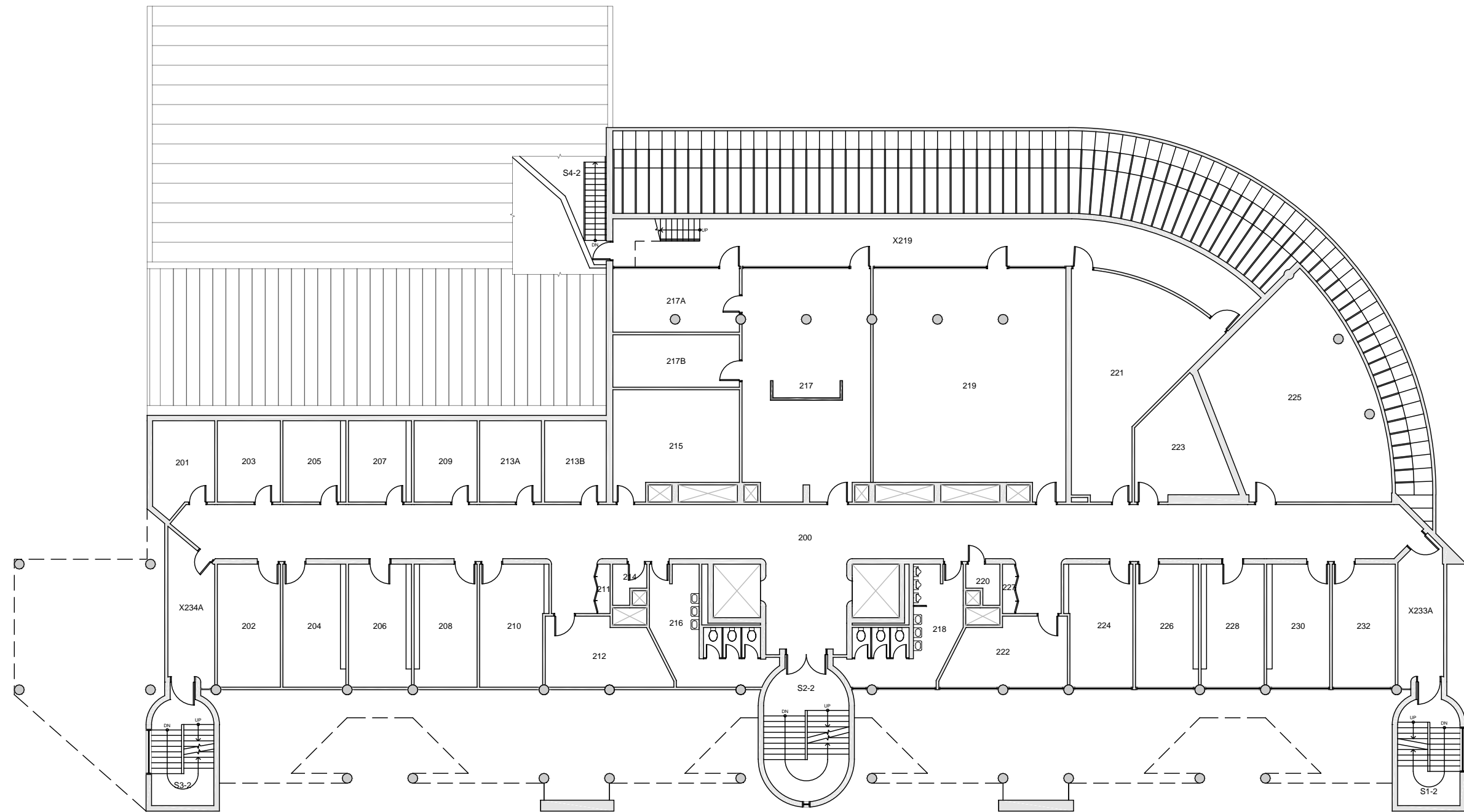
Date Revised: 03/11/2016

ARNTZEN HALL

FLOOR 1

Last Sync With FAMIS: 09/21/2015

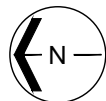
Building/Zone	AH
Floor #	1



Western Washington University (WWU) makes these documents available on an "as is" basis. All warranties and representations of any kind with regard to said documents are disclaimed, including the implied warranties of merchantability and fitness for a particular use. WWU does not warrant the documents against deficiencies of any kind.



TRUE NORTH



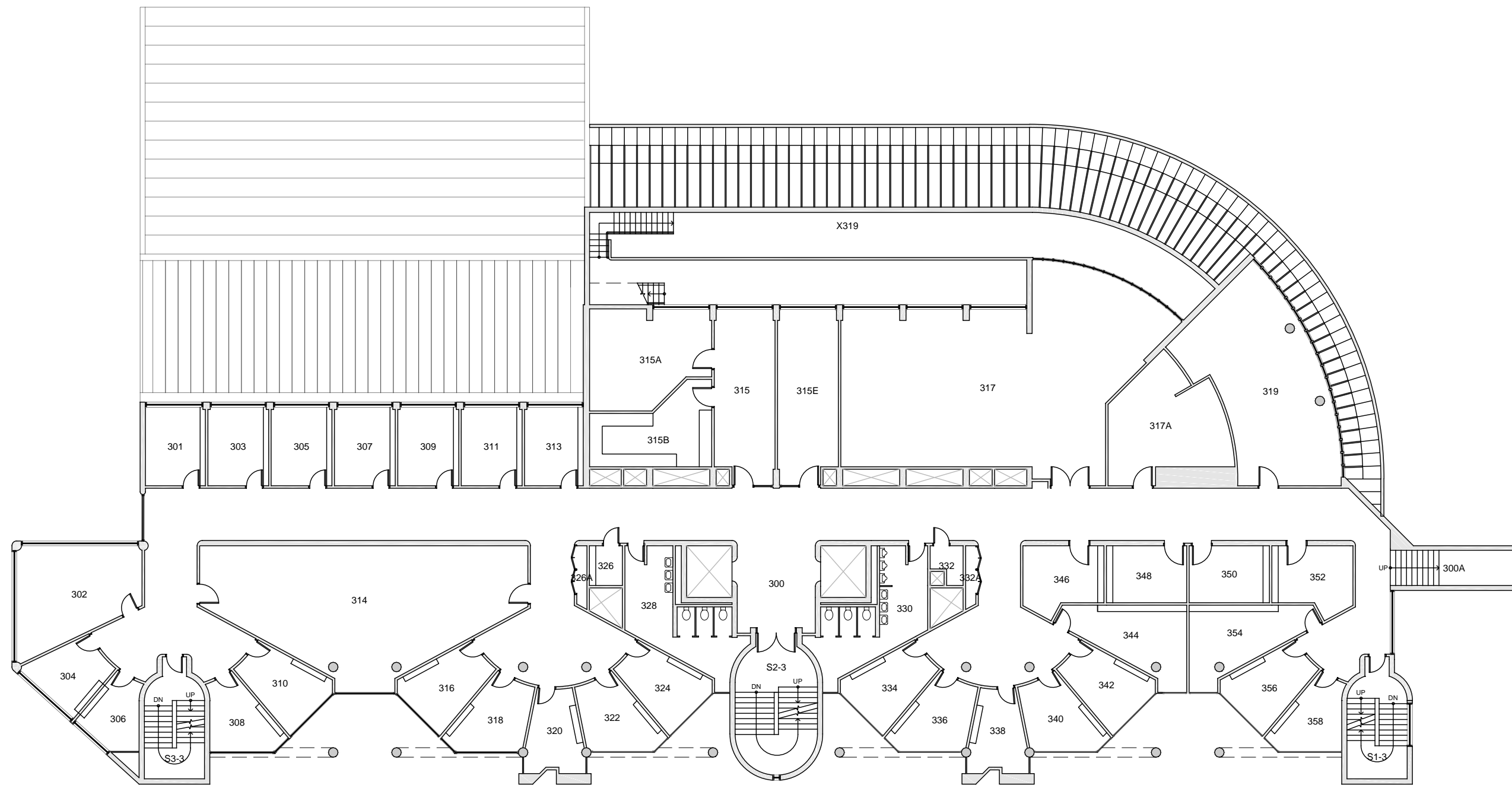
Date Revised: 03/11/2016

ARNTZEN HALL

FLOOR 2

Last Sync With FAMIS: 09/21/2015

Building/Zone
AH
Floor #
2



Western Washington University (WWU) makes these documents available on an "as is" basis. All warranties and representations of any kind with regard to said documents are disclaimed, including the implied warranties of merchantability and fitness for a particular use. WWU does not warrant the documents against deficiencies of any kind.



TRUE NORTH



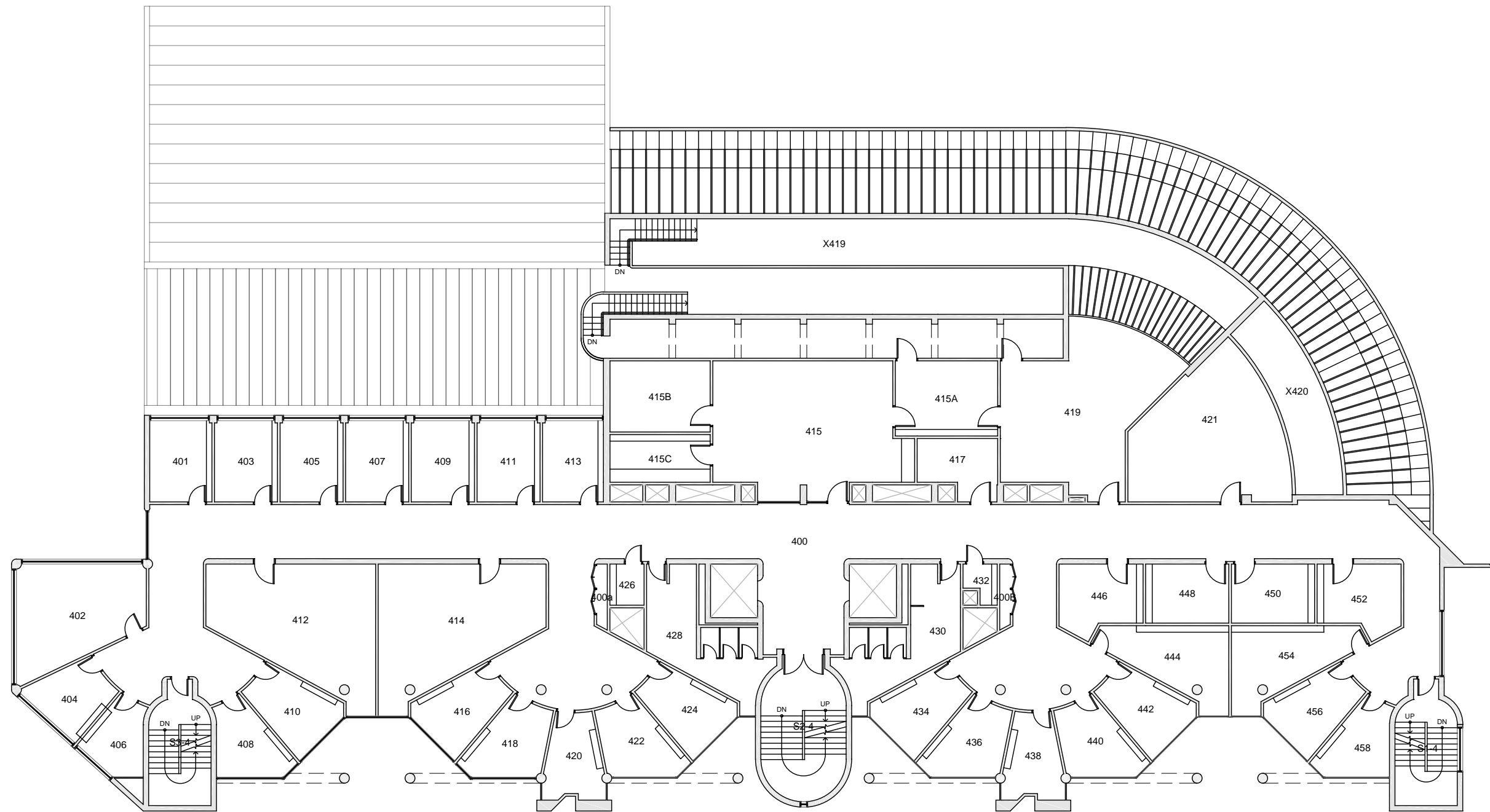
Date Revised: 03/11/2016

ARNTZEN HALL

FLOOR 3

Last Sync With FAMIS: 09/21/2015

Building/Zone
AH
Floor #
3



Western Washington University (WWU) makes these documents available on an "as is" basis. All warranties and representations of any kind with regard to said documents are disclaimed, including the implied warranties of merchantability and fitness for a particular use. WWU does not warrant the documents against deficiencies of any kind.



TRUE NORTH



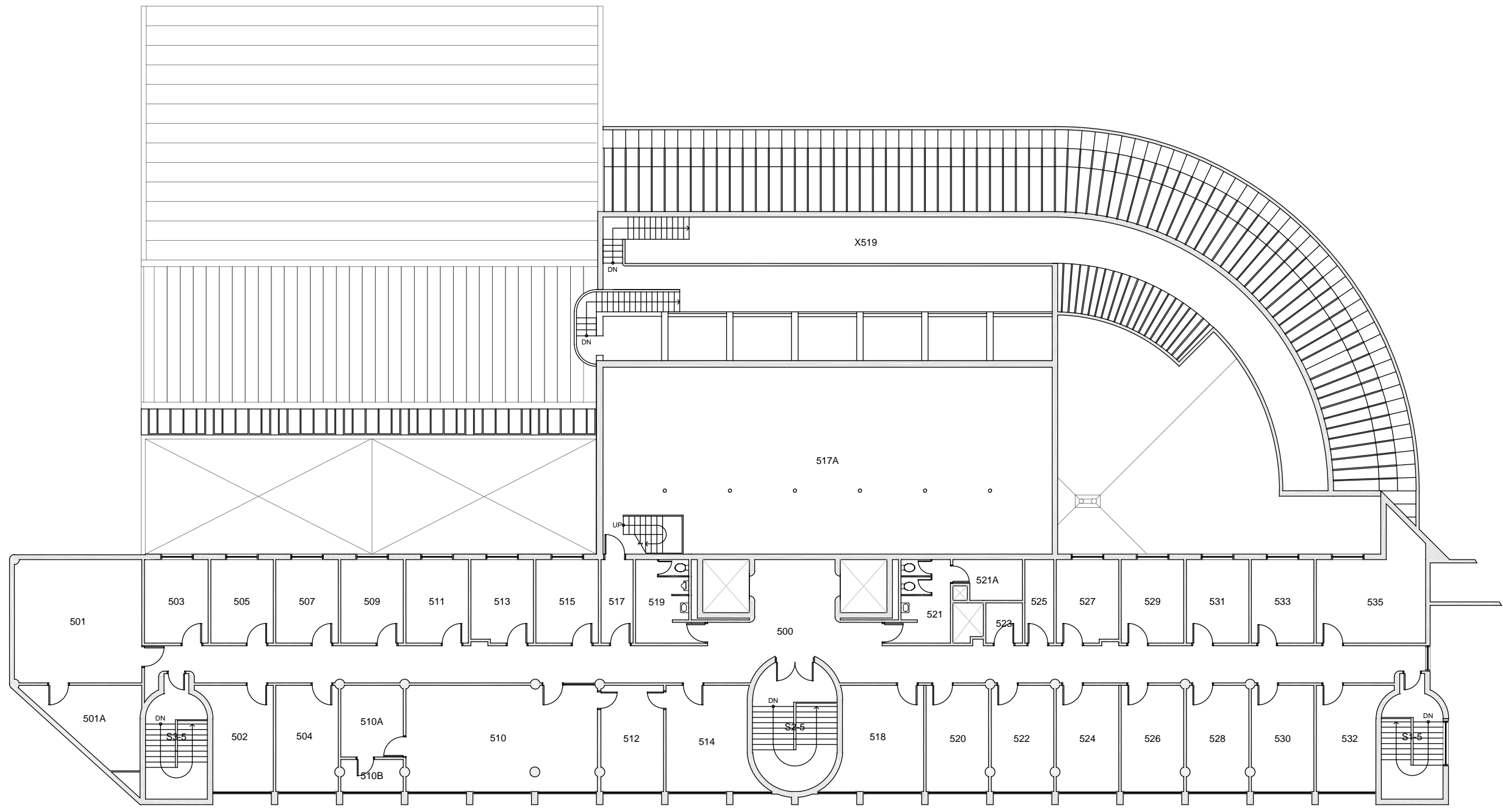
Date Revised: 03/11/2016

ARNTZEN HALL

FLOOR 4

Last Sync With FAMIS: 09/21/2015

Building Zone
AH
Floor #
4



Western Washington University (WWU) makes these documents available on an "as is" basis. All warranties and representations of any kind with regard to said documents are disclaimed, including the implied warranties of merchantability and fitness for a particular use. WWU does not warrant the documents against deficiencies of any kind.



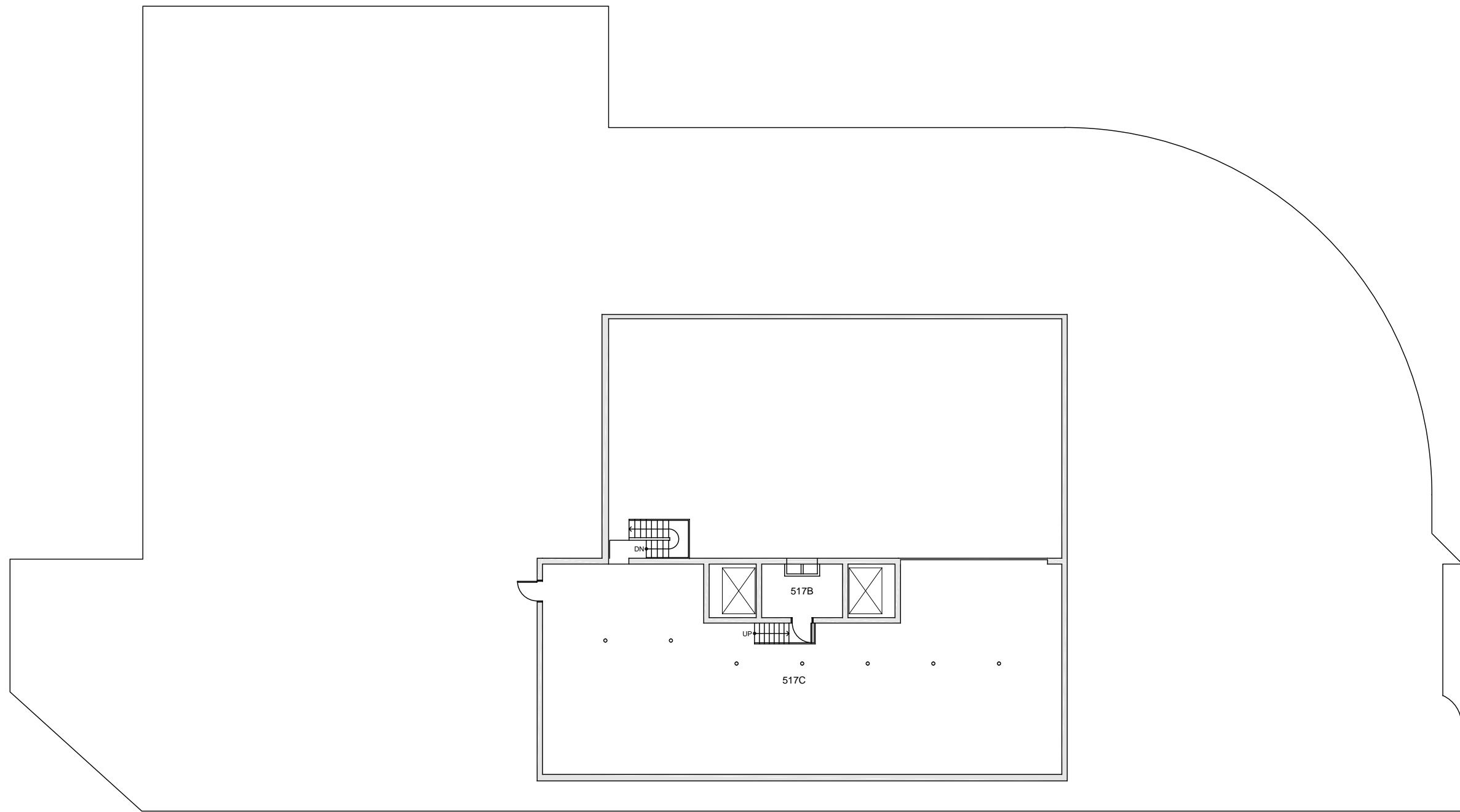
Date Revised: 08/11/2016

ARNTZEN HALL

FLOOR 5

Last Sync With FAMIS: 09/21/2015

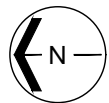
Building/Zone	AH
Floor #	5



Western Washington University (WWU) makes these documents available on an "as is" basis. All warranties and representations of any kind with regard to said documents are disclaimed, including the implied warranties of merchantability and fitness for a particular use. WWU does not warrant the documents against deficiencies of any kind.



TRUE NORTH



Date Revised: 03/11/2016

ARNTZEN HALL PENTHOUSE

Last Sync With FAMIS: 09/21/2015

Building/Zone

AH

Floor #

5M