

Western Washington University (WWU) makes these documents available on an "as is" basis. All warranties and representations of any kind with regard to said documents are disclaimed, including the implied warranties of merchantability and fitness for a particular use. WWU does not warrant the documents against deficiencies of any kind.



TRUE NORTH



PERFORMING ARTS CENTER

BASEMENT

Date Revised: 03/14/2016

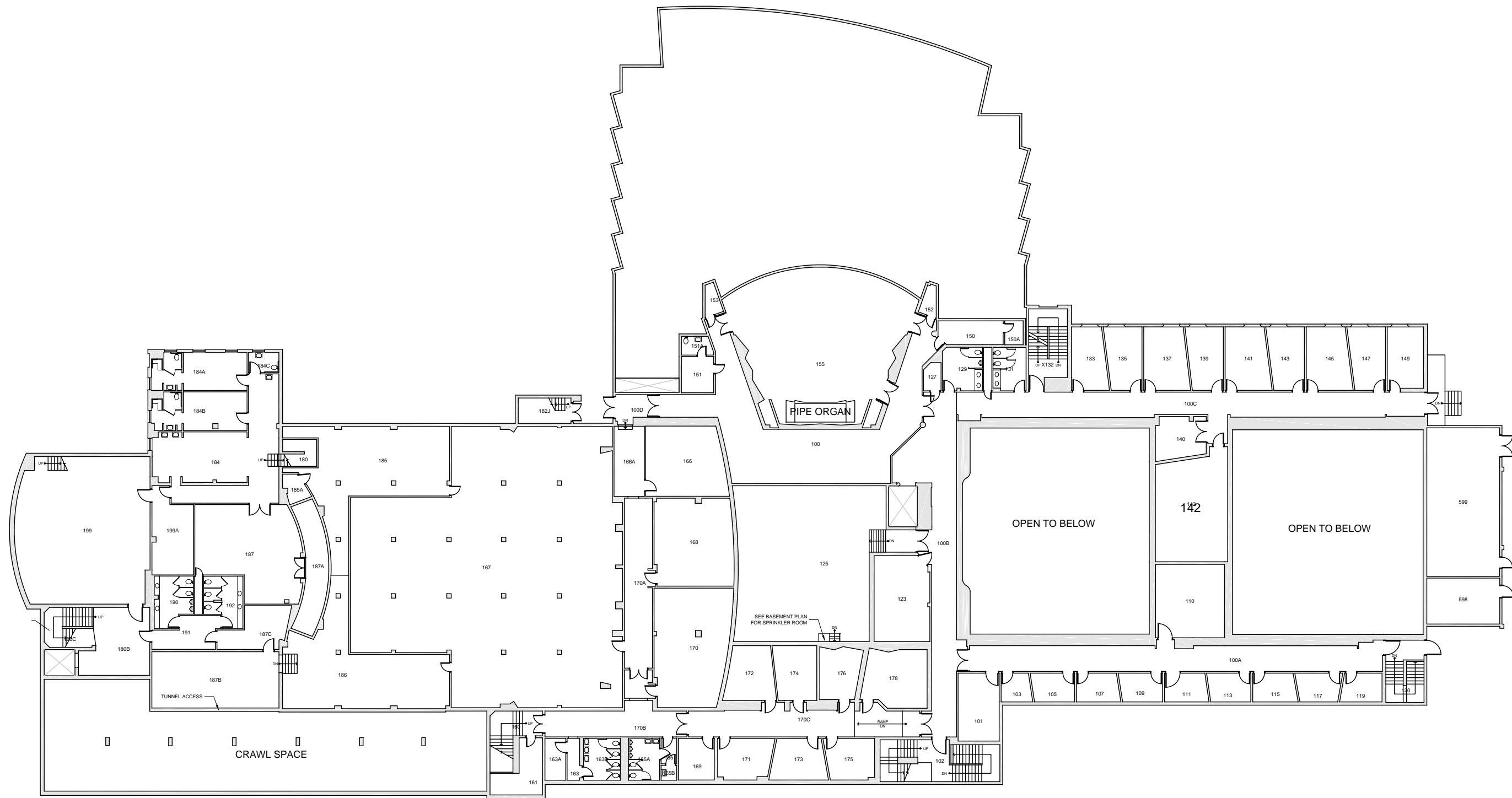
Last Sync With FAMIS: 10/06/2015

Building/Zone

PA

Floor #

B



Western Washington University (WWU) makes these documents available on an "as is" basis. All warranties and representations of any kind with regard to said documents are disclaimed, including the implied warranties of merchantability and fitness for a particular use. WWU does not warrant the documents against deficiencies of any kind.



TRUE NORTH



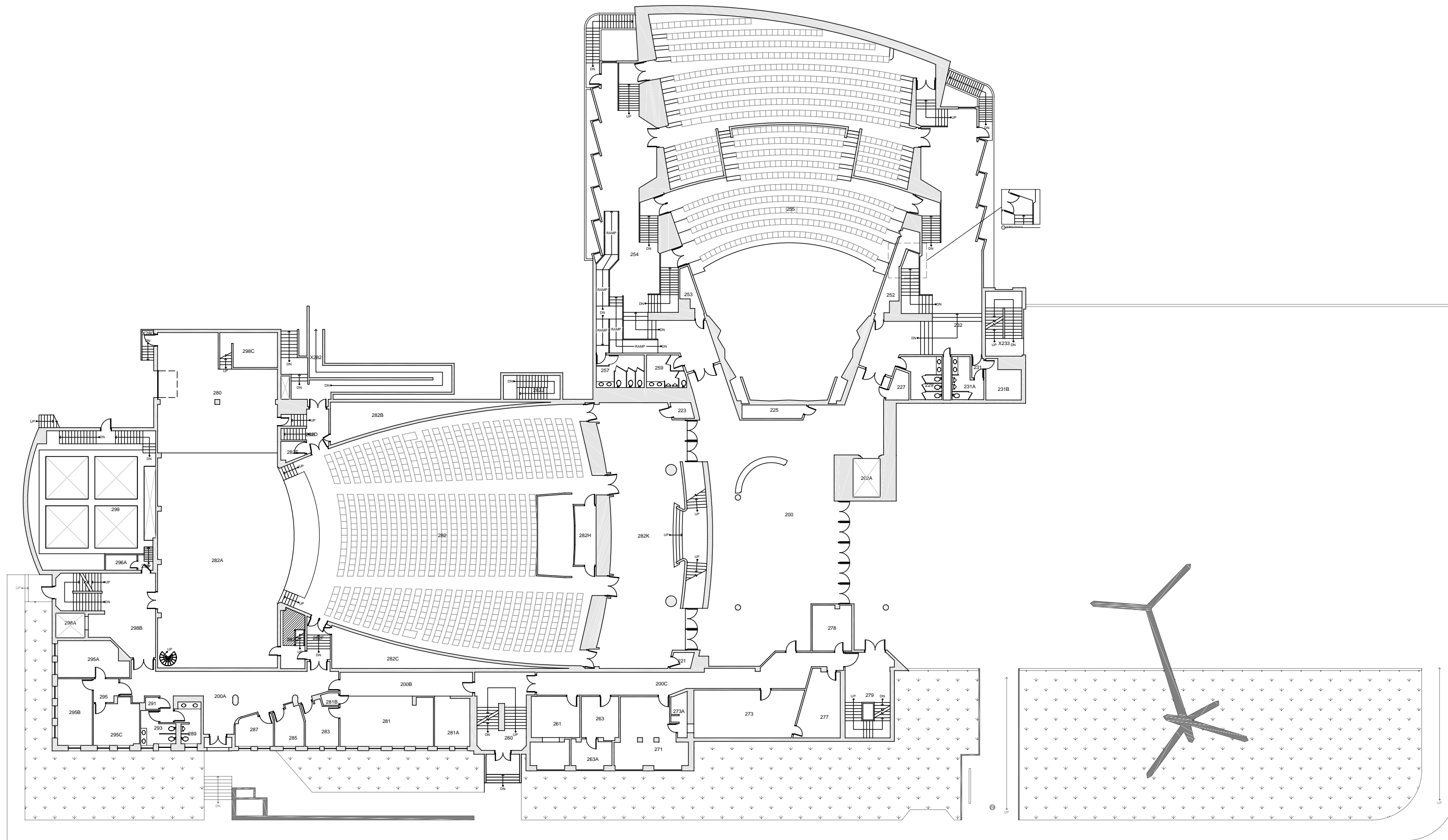
PERFORMING ARTS CENTER

FLOOR 1

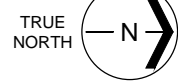
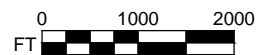
Date Revised: 03/14/2016

Last Sync With FAMIS: 10/12/2015

Building/Zone
PA
Floor #
1



Western Washington University (WWU) makes these documents available on an "as is" basis. All warranties and representations of any kind with regard to said documents are disclaimed, including the implied warranties of merchantability and fitness for a particular use. WWU does not warrant the documents against deficiencies of any kind.



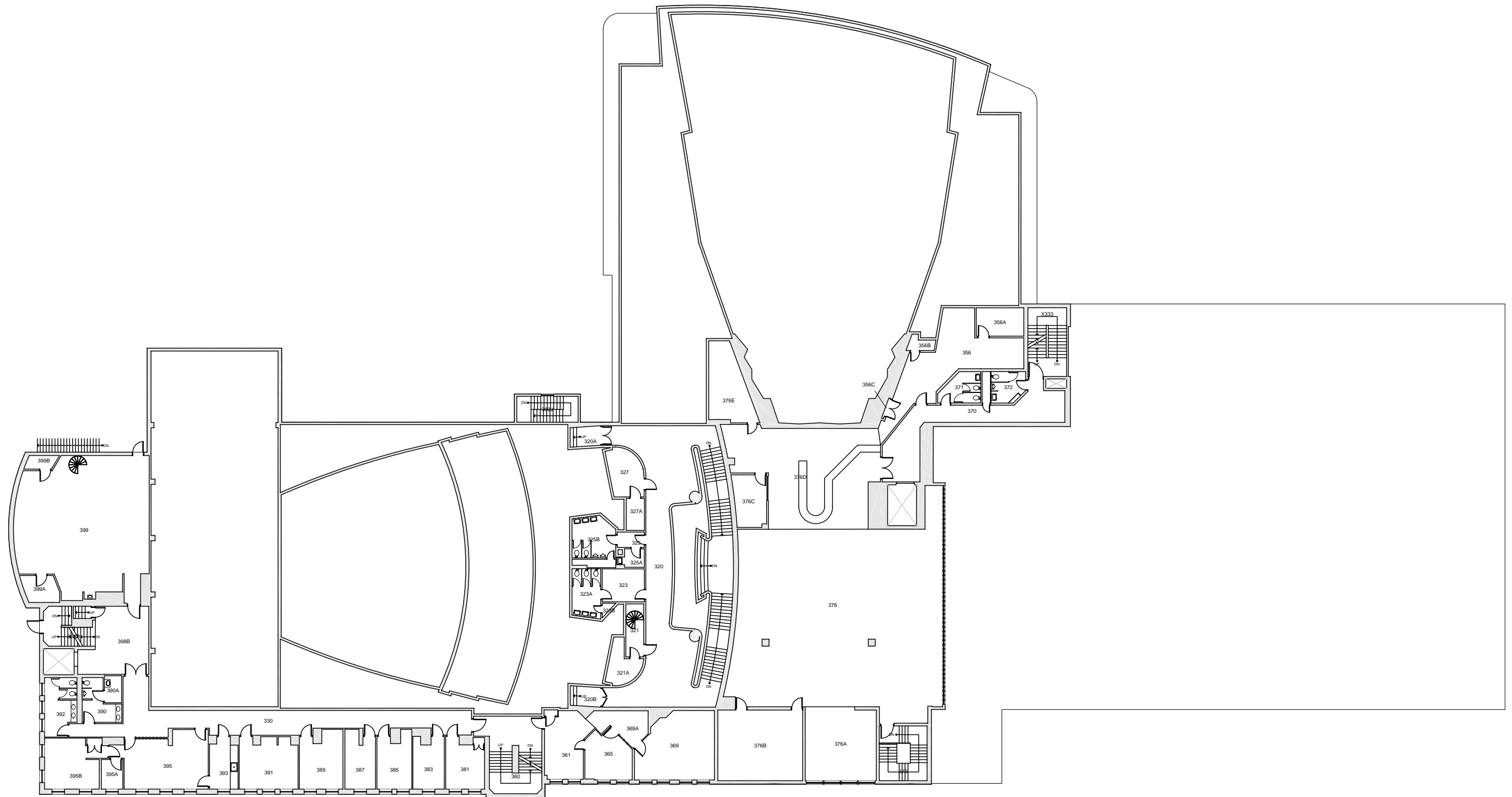
PERFORMING ARTS CENTER

FLOOR 2

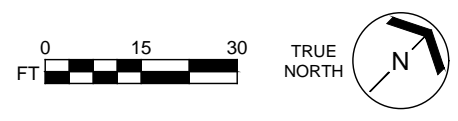
Date Revised: 08/11/2016

Last Sync With FAMIS: 08/11/2016

Building/Zone	PA
Floor #	2



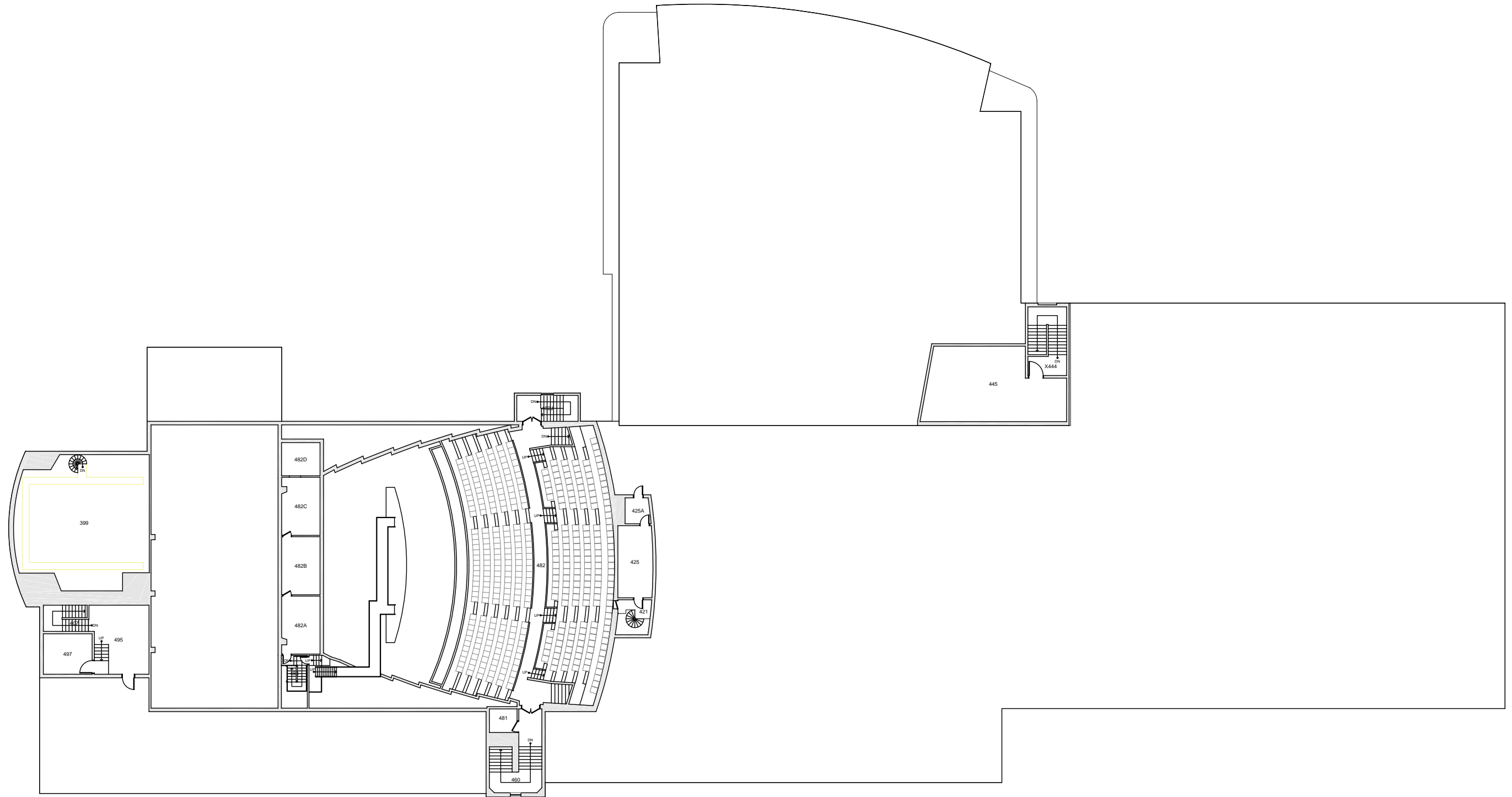
Western Washington University (WWU) makes these documents available on an "as is" basis. All warranties and representations of any kind with regard to said documents are disclaimed, including the implied warranties of merchantability and fitness for a particular use. WWU does not warrant the documents against deficiencies of any kind.



PERFORMING ARTS CENTER
FLOOR 3

Date Revised: 03/14/2016 Last Sync With FAMIS: 10/06/2015

Building/Zone	PA
Floor #	3



Western Washington University (WWU) makes these documents available on an "as is" basis. All warranties and representations of any kind with regard to said documents are disclaimed, including the implied warranties of merchantability and fitness for a particular use. WWU does not warrant the documents against deficiencies of any kind.



TRUE NORTH



PERFORMING ARTS CENTER

FLOOR 4

Date Revised: 03/14/2016

Last Sync With FAMIS: 10/06/2015

Building/Zone	PA
Floor #	4