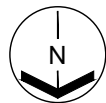


Western Washington University (WWU) makes these documents available on an "as is" basis. All warranties and representations of any kind with regard to said documents are disclaimed, including the implied warranties of merchantability and fitness for a particular use. WWU does not warrant the documents against deficiencies of any kind.



TRUE NORTH



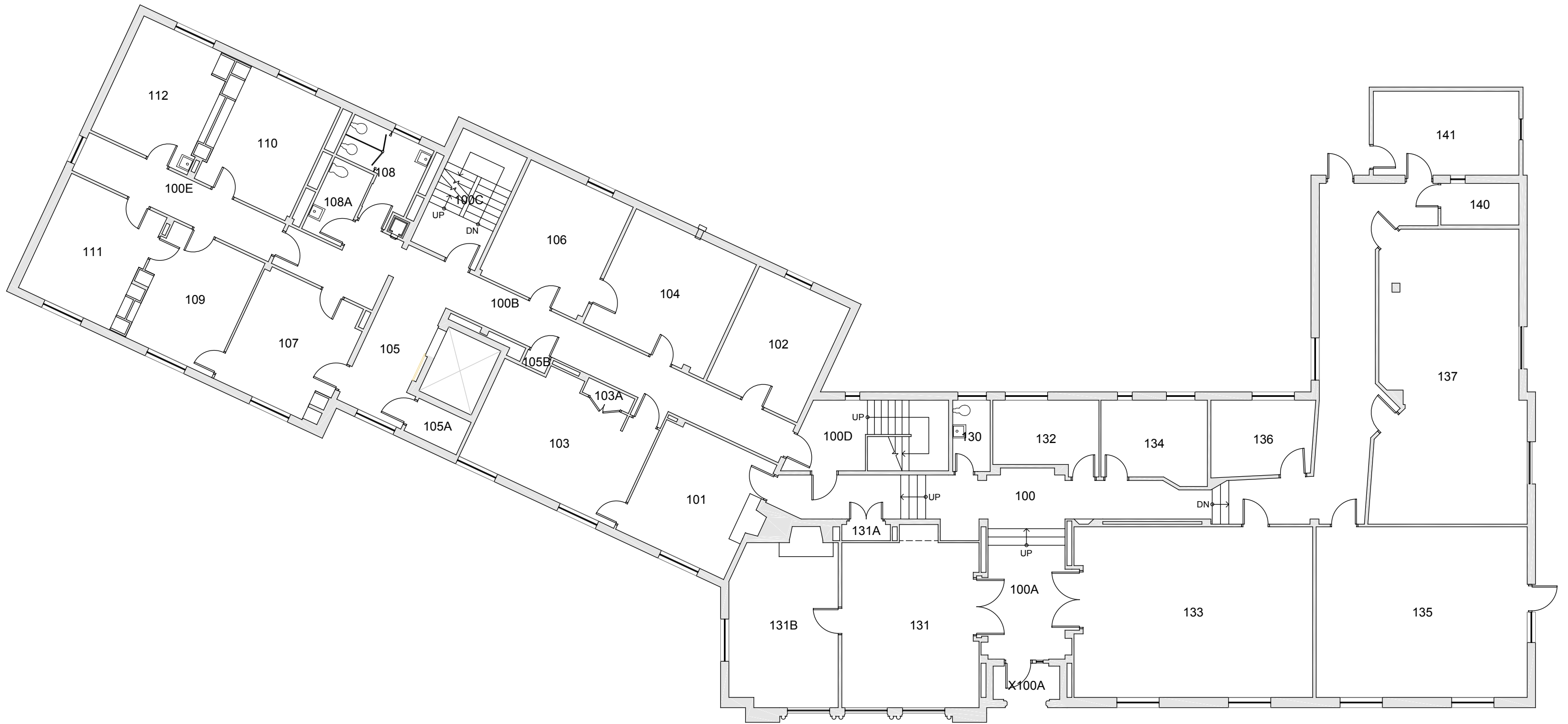
Date Revised: 03/11/2016

COLLEGE HALL

BASEMENT

Last Sync With FAMIS: 09/10/2015

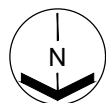
| | |
|---------------|----|
| Building/Zone | CH |
| Floor # | B |



Western Washington University (WWU) makes these documents available on an "as is" basis. All warranties and representations of any kind with regard to said documents are disclaimed, including the implied warranties of merchantability and fitness for a particular use. WWU does not warrant the documents against deficiencies of any kind.



TRUE NORTH



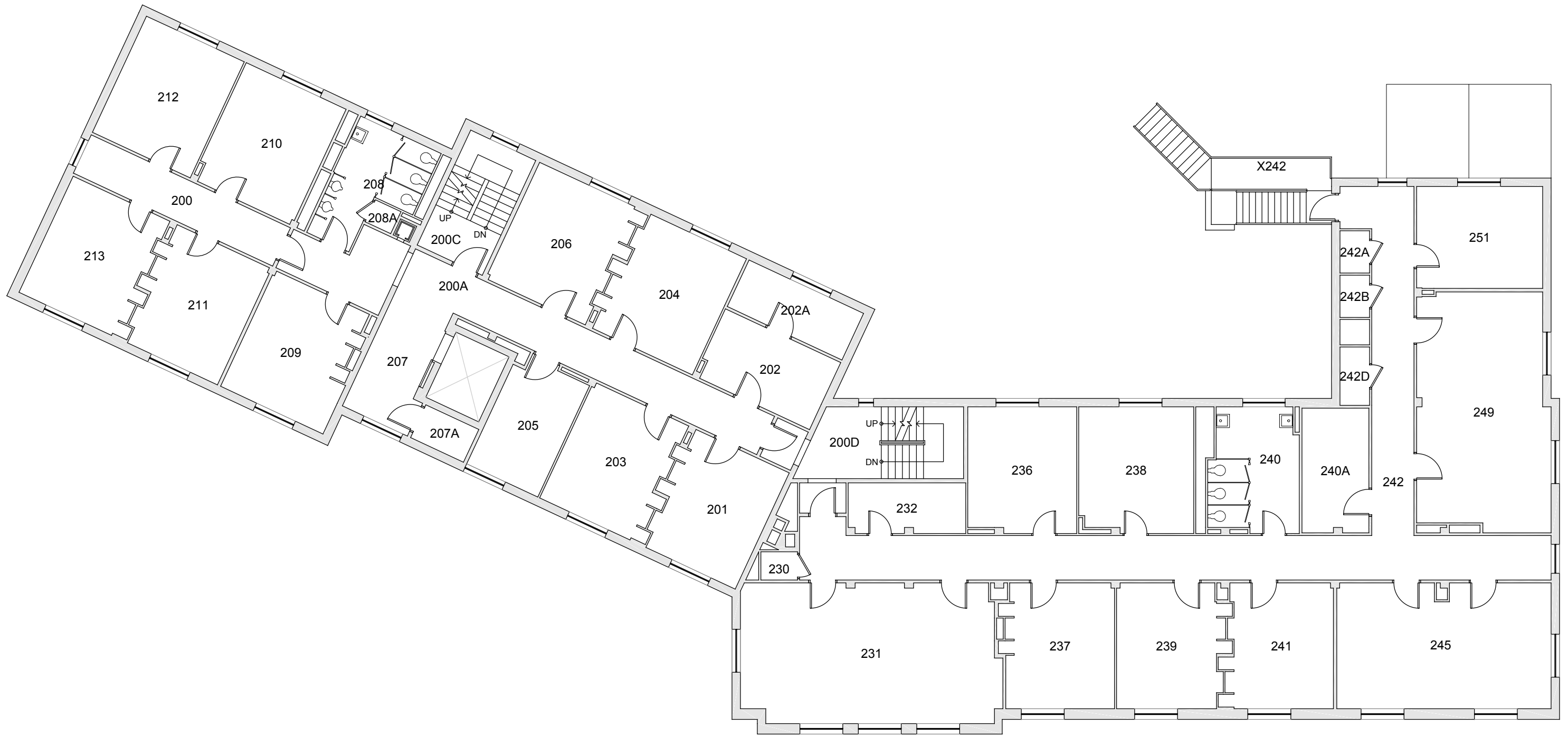
COLLEGE HALL

FLOOR 1

Date Revised: 08/24/2016

Last Sync With FAMIS: 08/24/2016

Building/Zone
CH
Floor #
1



Western Washington University (WWU) makes these documents available on an "as is" basis. All warranties and representations of any kind with regard to said documents are disclaimed, including the implied warranties of merchantability and fitness for a particular use. WWU does not warrant the documents against deficiencies of any kind.



TRUE NORTH



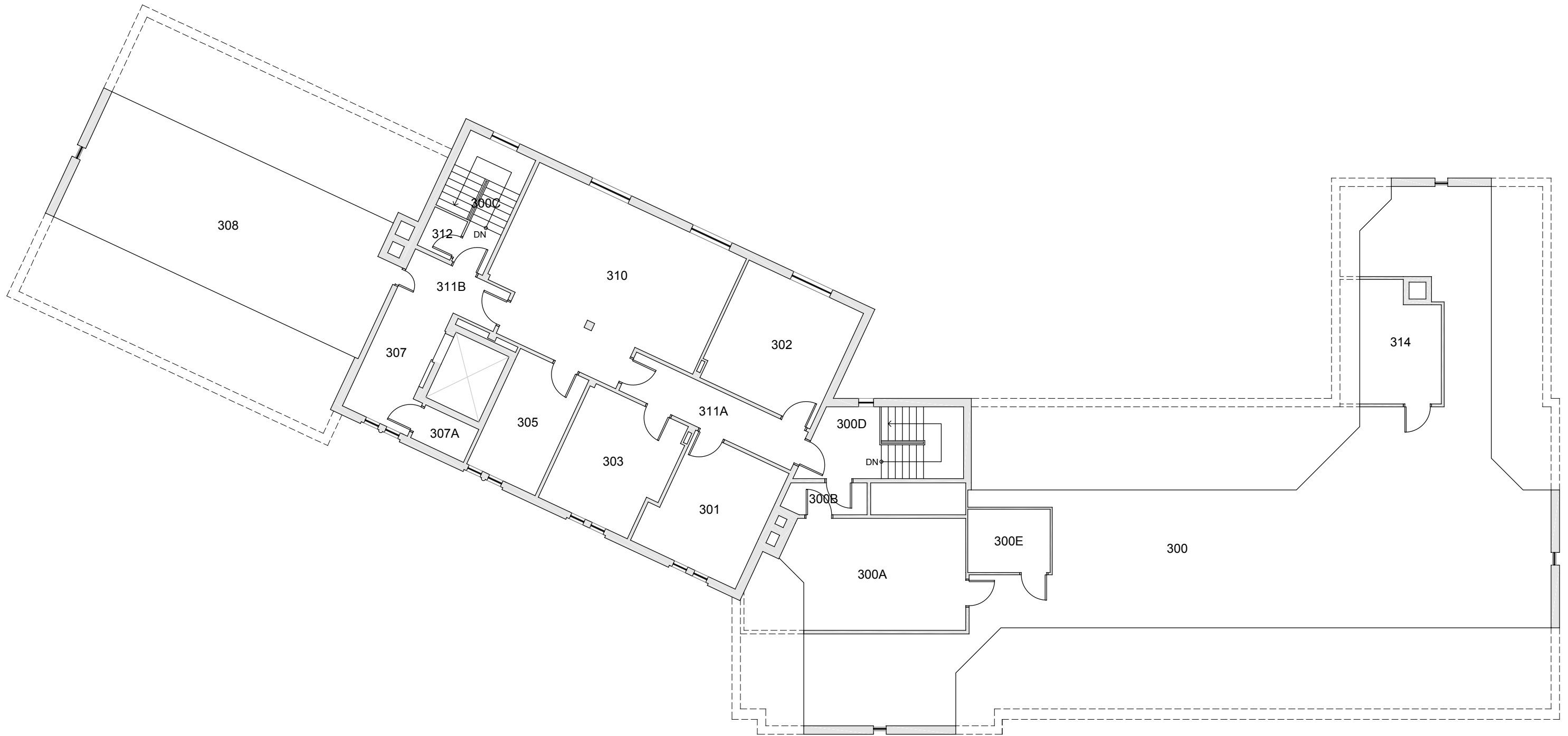
Date Revised: 08/24/2016

COLLEGE HALL

FLOOR 2

Last Sync With FAMIS: 09/10/2015

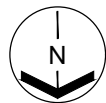
Building/Zone
CH
Floor #
2



Western Washington University (WWU) makes these documents available on an "as is" basis. All warranties and representations of any kind with regard to said documents are disclaimed, including the implied warranties of merchantability and fitness for a particular use. WWU does not warrant the documents against deficiencies of any kind.



TRUE NORTH



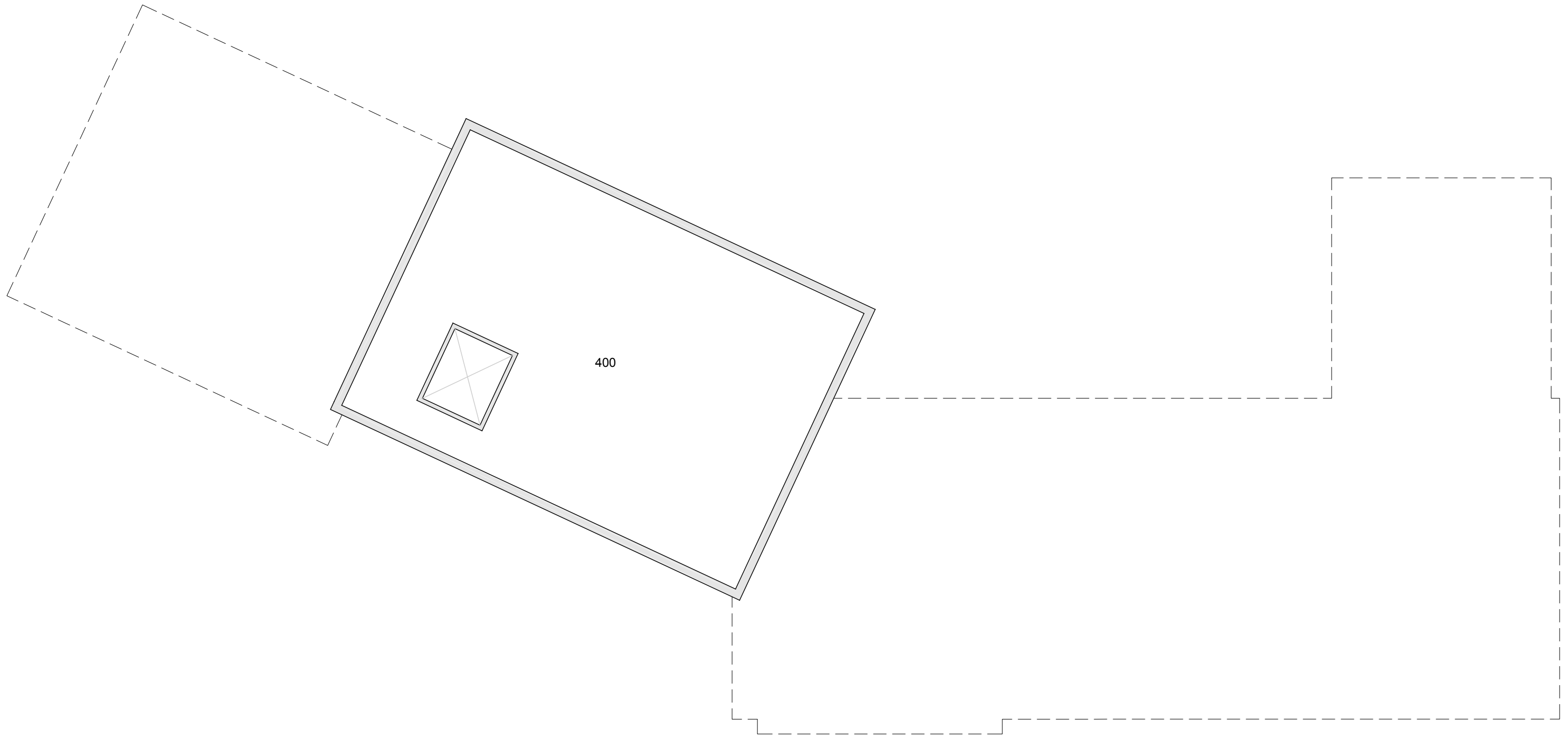
Date Revised: 08/24/2016

COLLEGE HALL

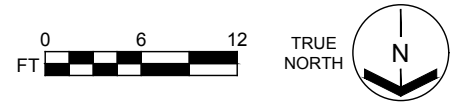
FLOOR 3

Last Sync With FAMIS: 08/24/2016

| | |
|---------------|----|
| Building/Zone | CH |
| Floor # | 3 |



Western Washington University (WWU) makes these documents available on an "as is" basis. All warranties and representations of any kind with regard to said documents are disclaimed, including the implied warranties of merchantability and fitness for a particular use. WWU does not warrant the documents against deficiencies of any kind.



COLLEGE HALL
FLOOR 4

Date Revised: 03/11/2016 Last Sync With FAMIS: 09/10/2015

| | |
|---------------|-----------|
| Building/Zone | CH |
| Floor # | 4 |