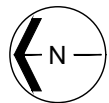


Western Washington University (WWU) makes these documents available on an "as is" basis. All warranties and representations of any kind with regard to said documents are disclaimed, including the implied warranties of merchantability and fitness for a particular use. WWU does not warrant the documents against deficiencies of any kind.



TRUE NORTH



# FINE ARTS BUILDING

## BASEMENT

Date Revised: 03/14/2016

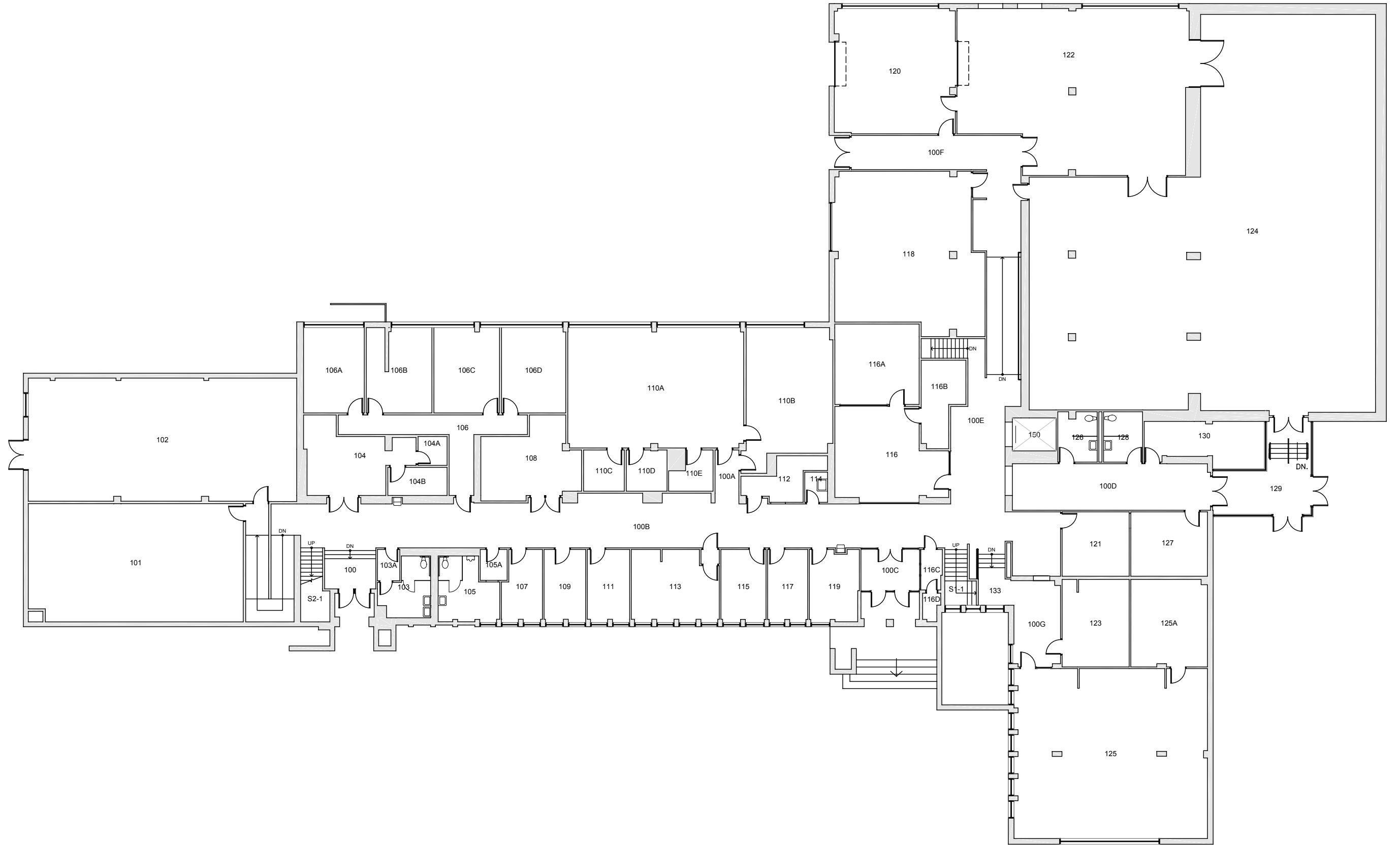
Last Sync With FAMIS: 10/26/2015

Building/Zone

FI

Floor #

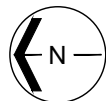
B



Western Washington University (WWU) makes these documents available on an "as is" basis. All warranties and representations of any kind with regard to said documents are disclaimed, including the implied warranties of merchantability and fitness for a particular use. WWU does not warrant the documents against deficiencies of any kind.



TRUE NORTH



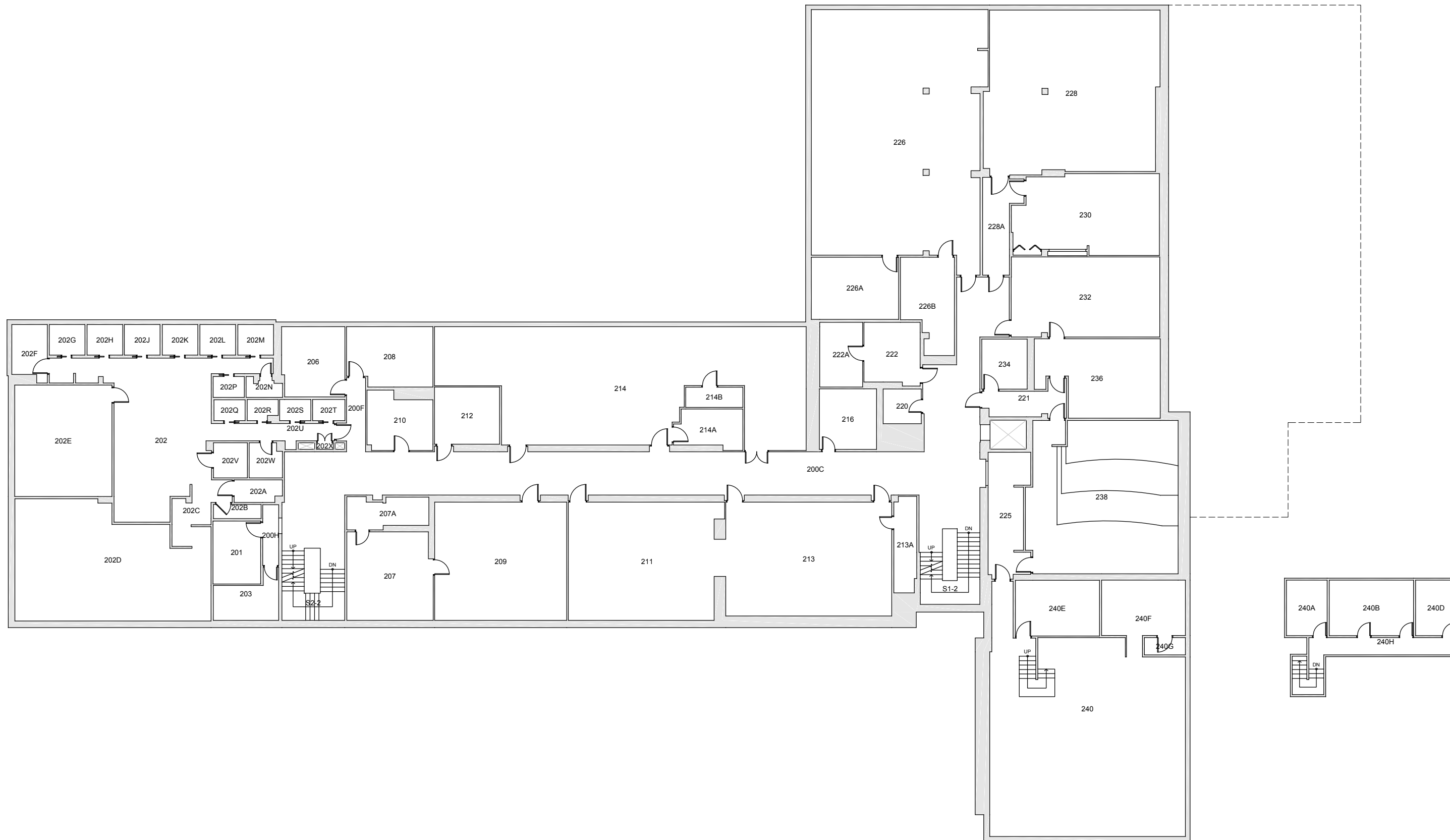
# FINE ARTS BUILDING

## FLOOR 1

Date Revised: 03/14/2016

Last Sync With FAMIS: 10/26/2015

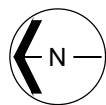
Building/Zone  
**FI**  
Floor #  
**1**



Western Washington University (WWU) makes these documents available on an "as is" basis. All warranties and representations of any kind with regard to said documents are disclaimed, including the implied warranties of merchantability and fitness for a particular use. WWU does not warrant the documents against deficiencies of any kind.



TRUE NORTH



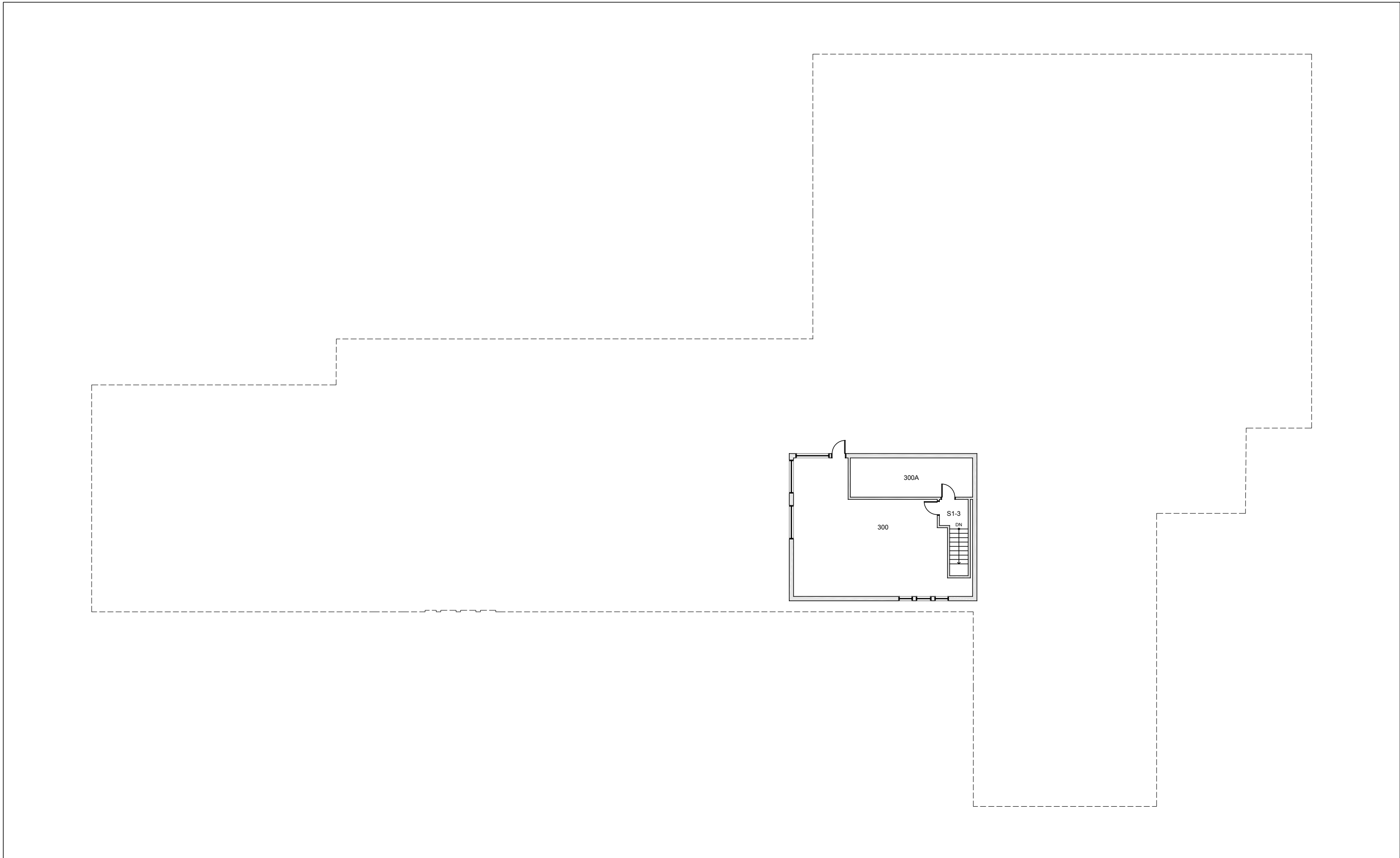
Date Revised: 08/11/2016

# FINE ARTS BUILDING

## FLOOR 2

Last Sync With FAMIS: 08/11/2016

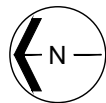
Building/Zone	<b>FI</b>
Floor #	<b>2</b>



Western Washington University (WWU) makes these documents available on an "as is" basis. All warranties and representations of any kind with regard to said documents are disclaimed, including the implied warranties of merchantability and fitness for a particular use. WWU does not warrant the documents against deficiencies of any kind.



TRUE NORTH



**FINE ARTS BUILDING**  
FLOOR 3

Date Revised: 03/14/2016

Last Sync With FAMIS: 10/26/2015

Building/Zone	<b>FI</b>
Floor #	<b>3</b>