

Western Washington University (WWU) makes these documents available on an "as is" basis. All warranties and representations of any kind with regard to said documents are disclaimed, including the implied warranties of merchantability and fitness for a particular use. WWU does not warrant the documents against deficiencies of any kind.



TRUE NORTH

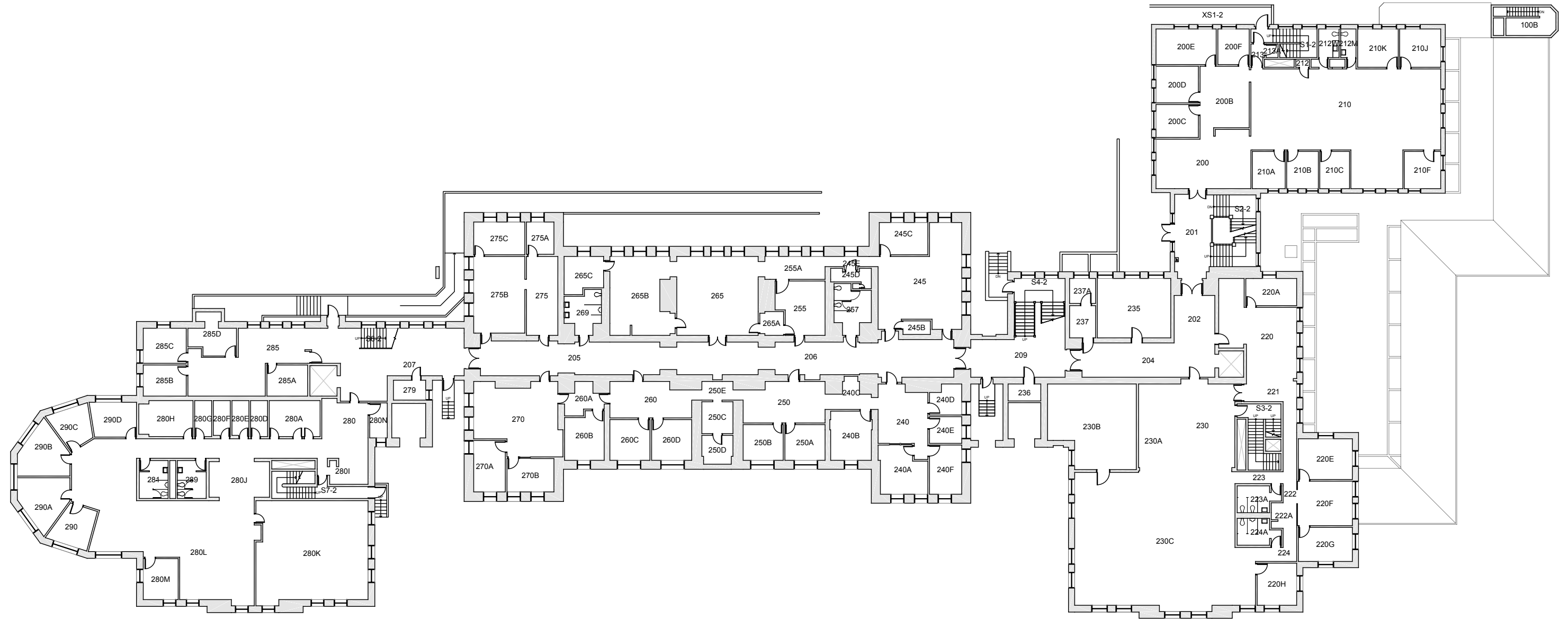


Date Revised: 03/14/2016

OLD MAIN FLOOR 1

Last Sync With FAMIS: 08/07/2015

Building/Zone	OM
Floor #	1



Western Washington University (WWU) makes these documents available on an "as is" basis. All warranties and representations of any kind with regard to said documents are disclaimed, including the implied warranties of merchantability and fitness for a particular use. WWU does not warrant the documents against deficiencies of any kind.



TRUE NORTH

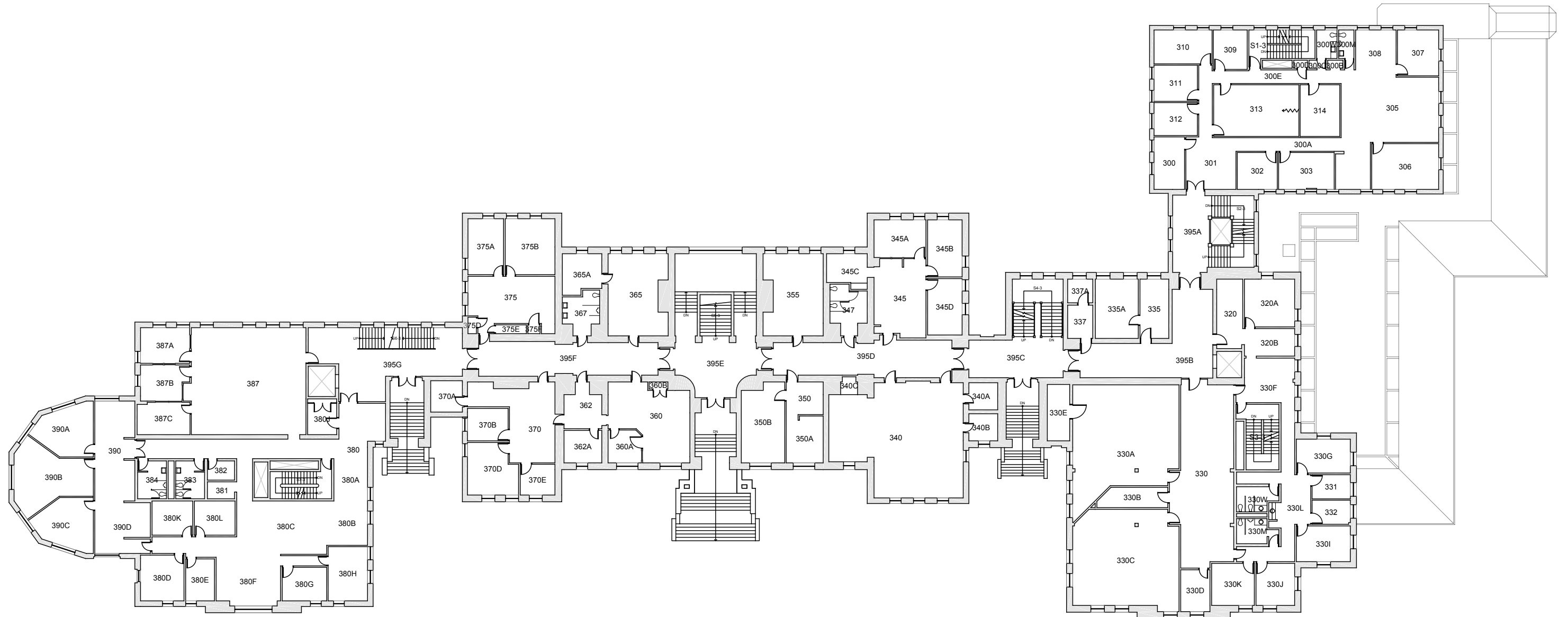


Date Revised: 03/14/2016

OLD MAIN FLOOR 2

Last Sync With FAMIS: 08/07/2015

Building/Zone	OM
Floor #	2



Western Washington University (WWU) makes these documents available on an "as is" basis. All warranties and representations of any kind with regard to said documents are disclaimed, including the implied warranties of merchantability and fitness for a particular use. WWU does not warrant the documents against deficiencies of any kind.



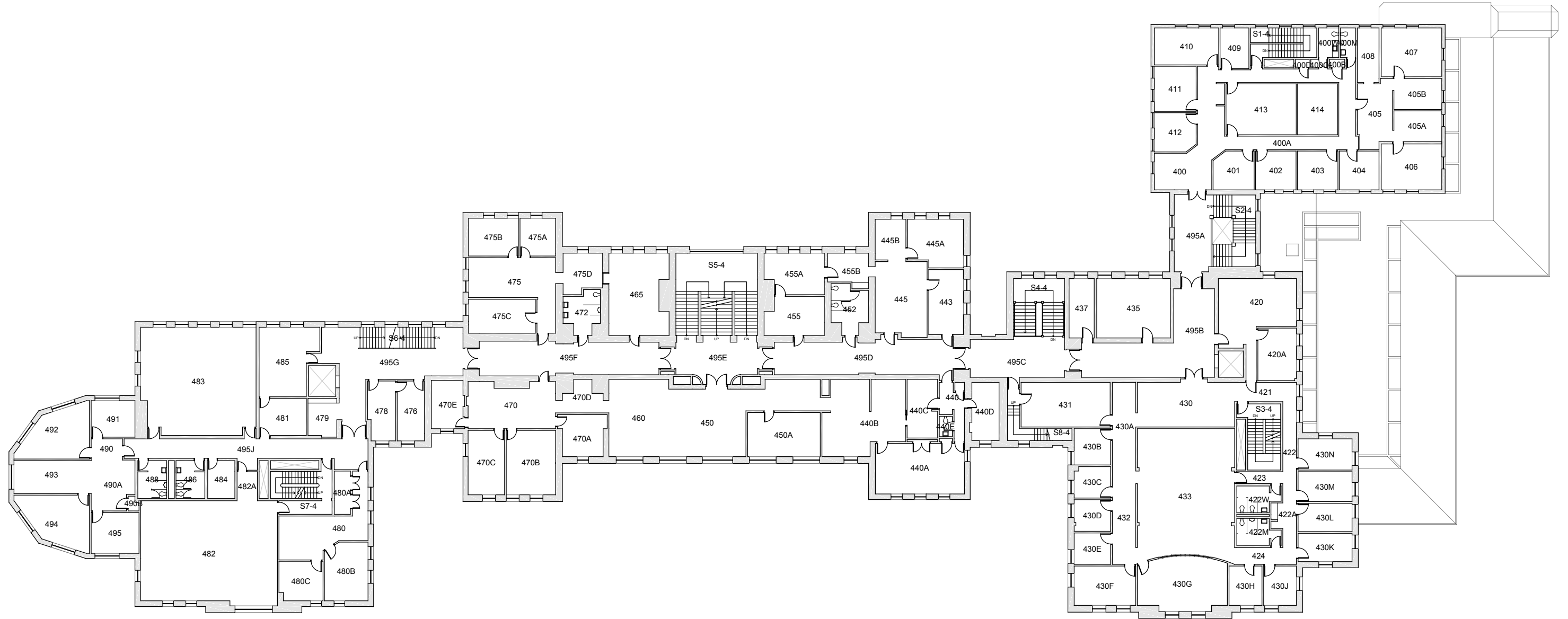
OLD MAIN
FLOOR 3

Date Revised: 03/14/2016

Last Sync With FAMIS: 08/07/2015

Building/Zone
OM

Floor #
3



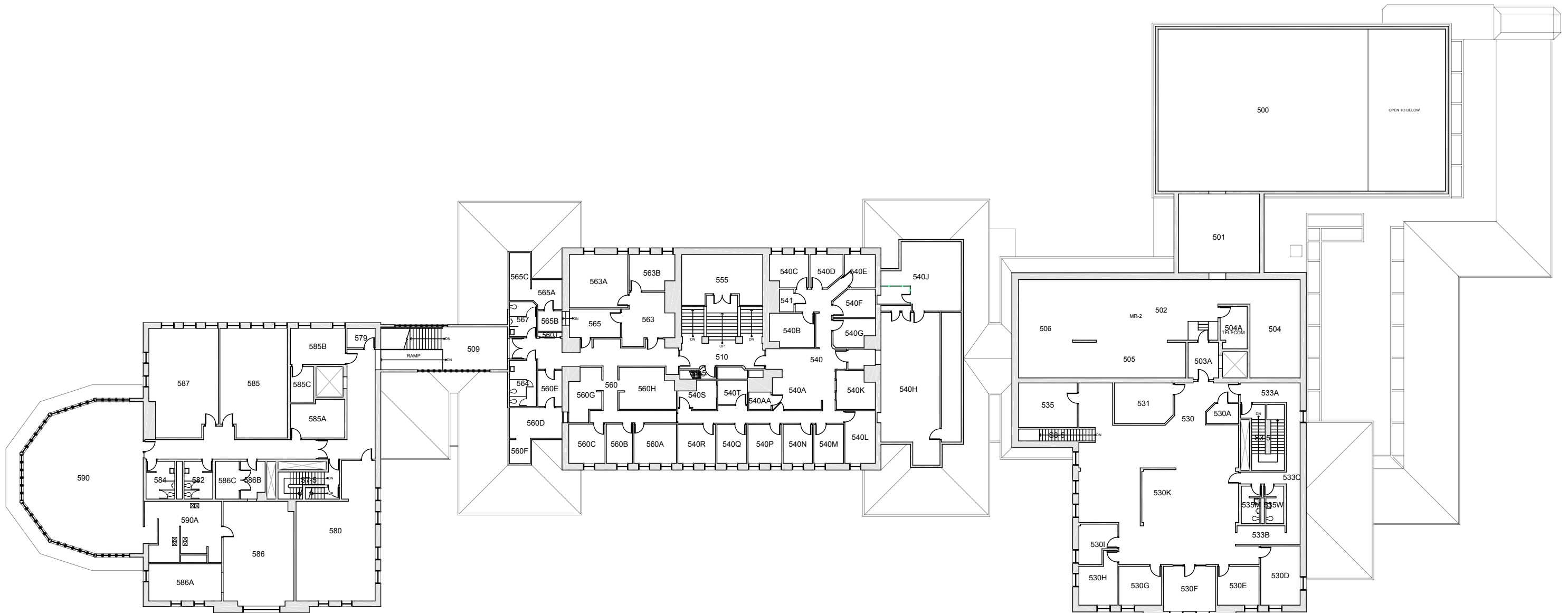
Western Washington University (WWU) makes these documents available on an "as is" basis. All warranties and representations of any kind with regard to said documents are disclaimed, including the implied warranties of merchantability and fitness for a particular use. WWU does not warrant the documents against deficiencies of any kind.



OLD MAIN
FLOOR 4

Date Revised: 08/18/2016 Last Sync With FAMIS: 08/18/2016

Building/Zone
OM
Floor #
4



Western Washington University (WWU) makes these documents available on an "as is" basis. All warranties and representations of any kind with regard to said documents are disclaimed, including the implied warranties of merchantability and fitness for a particular use. WWU does not warrant the documents against deficiencies of any kind.



TRUE NORTH



Date Revised: 03/14/2016

OLD MAIN FLOOR 5

Last Sync With FAMIS: 08/07/2015

Building/Zone

OM

Floor #

5