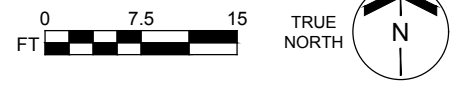


Western Washington University (WWU) makes these documents available on an "as is" basis. All warranties and representations of any kind with regard to said documents are disclaimed, including the implied warranties of merchantability and fitness for a particular use. WWU does not warrant the documents against deficiencies of any kind.

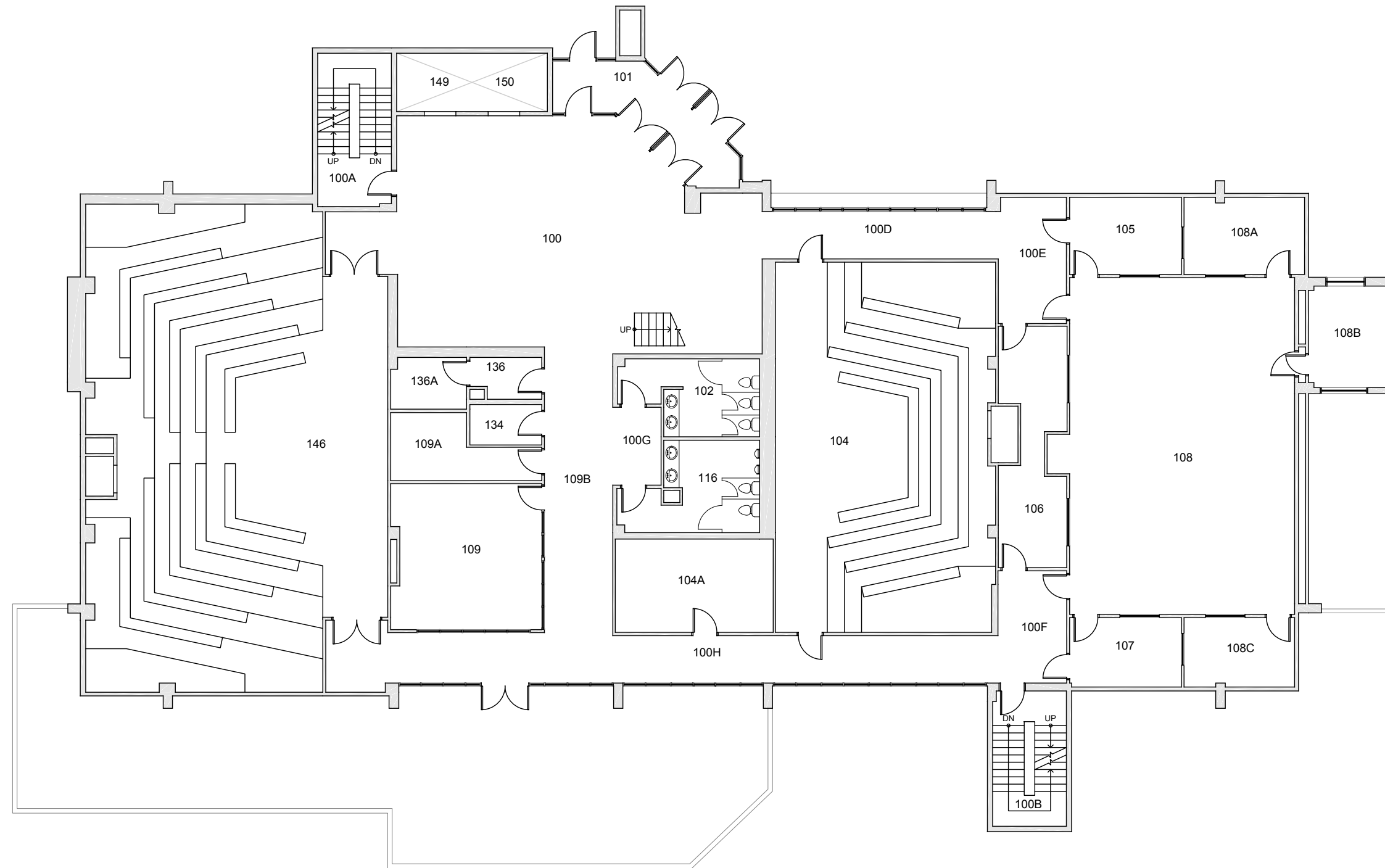


Date Revised: 08/24/2016

## PARKS HALL GROUND LEVEL

Last Sync With FAMIS: 08/24/2016

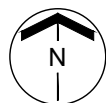
Building/Zone	PH
Floor #	B



Western Washington University (WWU) makes these documents available on an "as is" basis. All warranties and representations of any kind with regard to said documents are disclaimed, including the implied warranties of merchantability and fitness for a particular use. WWU does not warrant the documents against deficiencies of any kind.



TRUE NORTH



Date Revised: 03/14/2016

# PARKS HALL

## PLAZA LEVEL

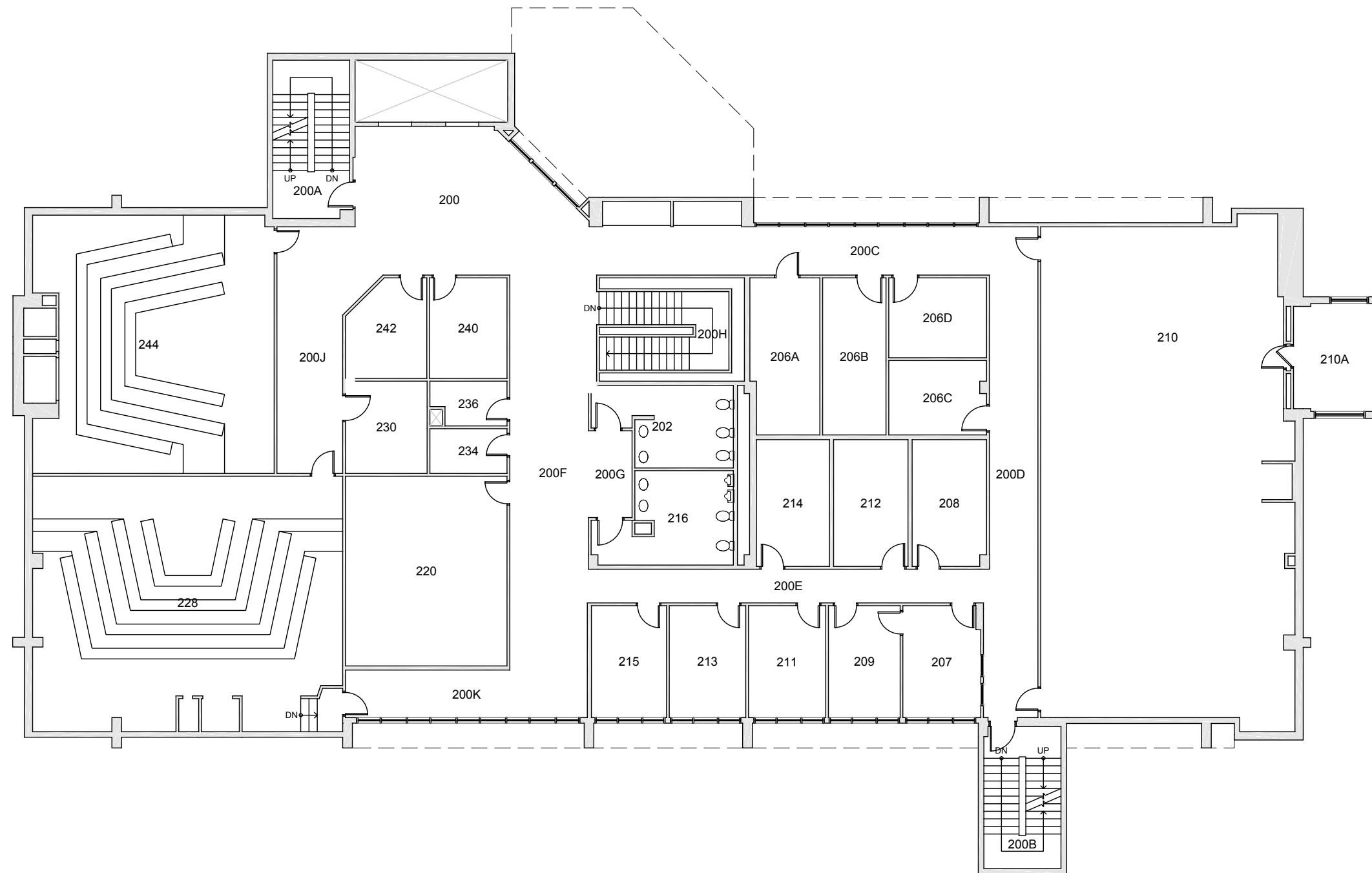
Last Sync With FAMIS: 11/18/2015

Building/Zone

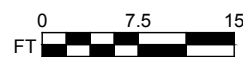
PH

Floor #

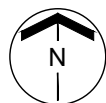
1



Western Washington University (WWU) makes these documents available on an "as is" basis. All warranties and representations of any kind with regard to said documents are disclaimed, including the implied warranties of merchantability and fitness for a particular use. WWU does not warrant the documents against deficiencies of any kind.



TRUE NORTH



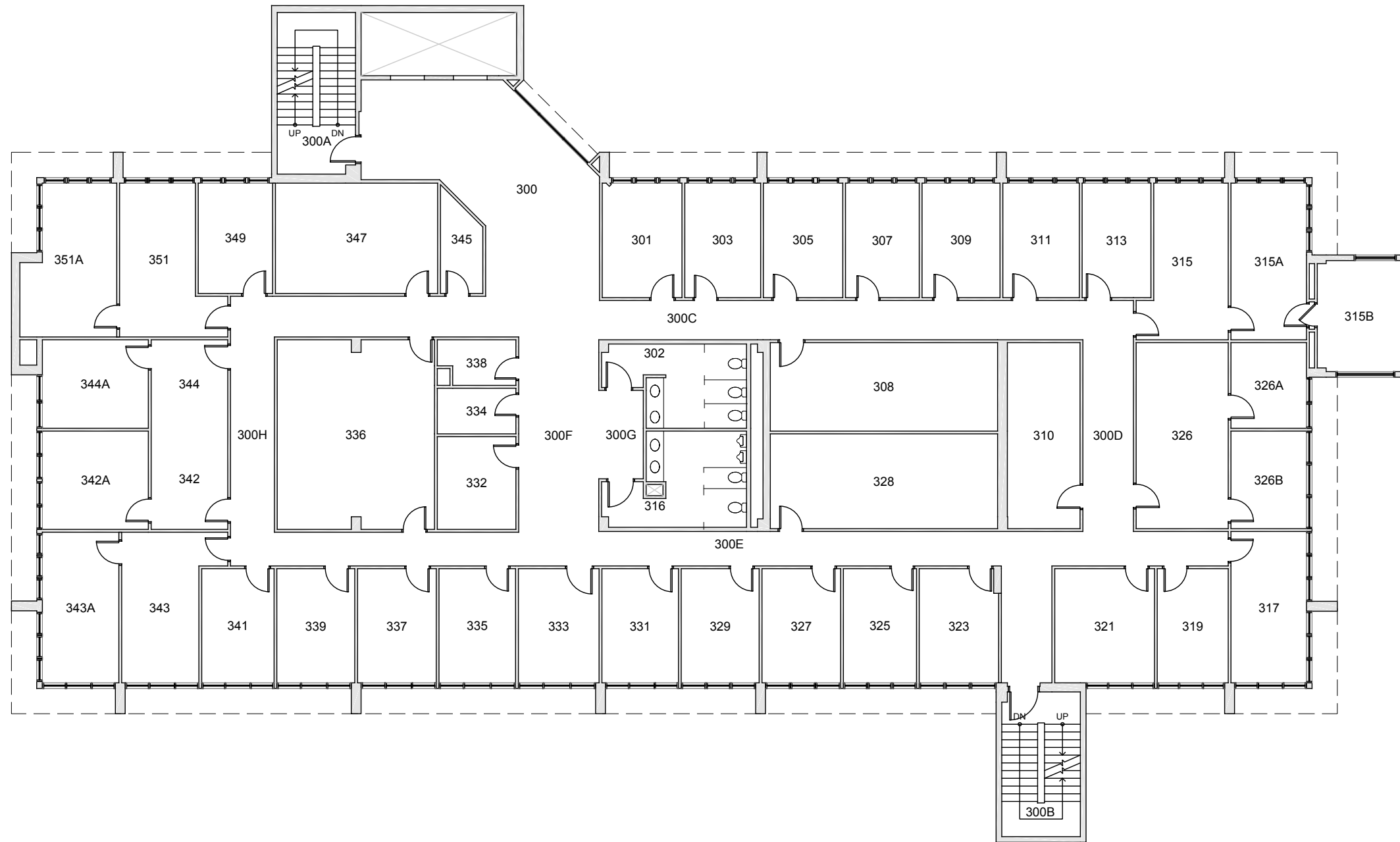
Date Revised: 03/14/2016

# PARKS HALL

## LEVEL 200

Last Sync With FAMIS: 11/18/2015

Building/Zone  
**PH**  
Floor #  
**2**



Western Washington University (WWU) makes these documents available on an "as is" basis. All warranties and representations of any kind with regard to said documents are disclaimed, including the implied warranties of merchantability and fitness for a particular use. WWU does not warrant the documents against deficiencies of any kind.



TRUE NORTH



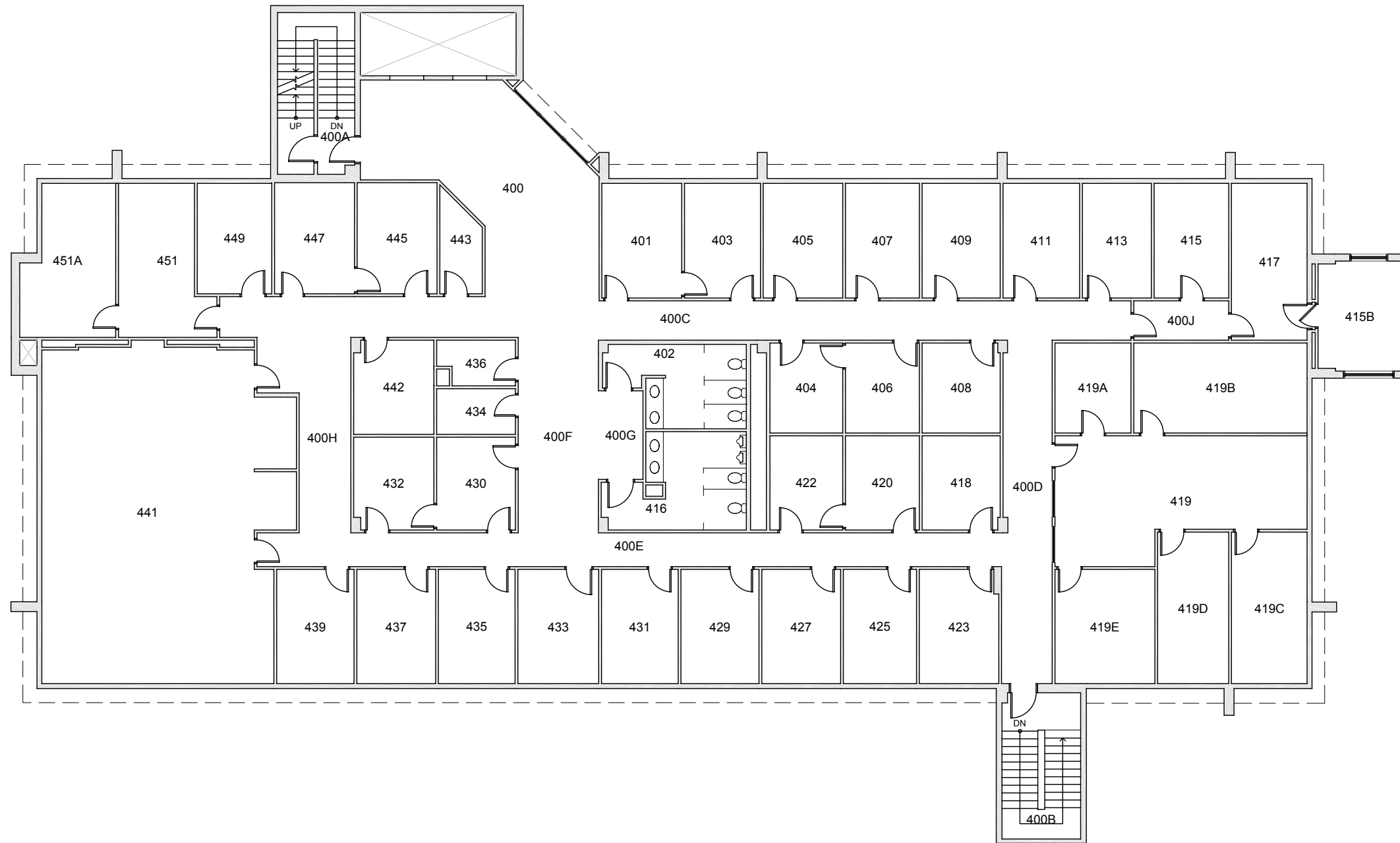
Date Revised: 03/14/2016

# PARKS HALL

## LEVEL 300

Last Sync With FAMIS: 11/18/2015

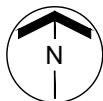
Building/Zone  
**PH**  
Floor #  
**3**



Western Washington University (WWU) makes these documents available on an "as is" basis. All warranties and representations of any kind with regard to said documents are disclaimed, including the implied warranties of merchantability and fitness for a particular use. WWU does not warrant the documents against deficiencies of any kind.



TRUE NORTH



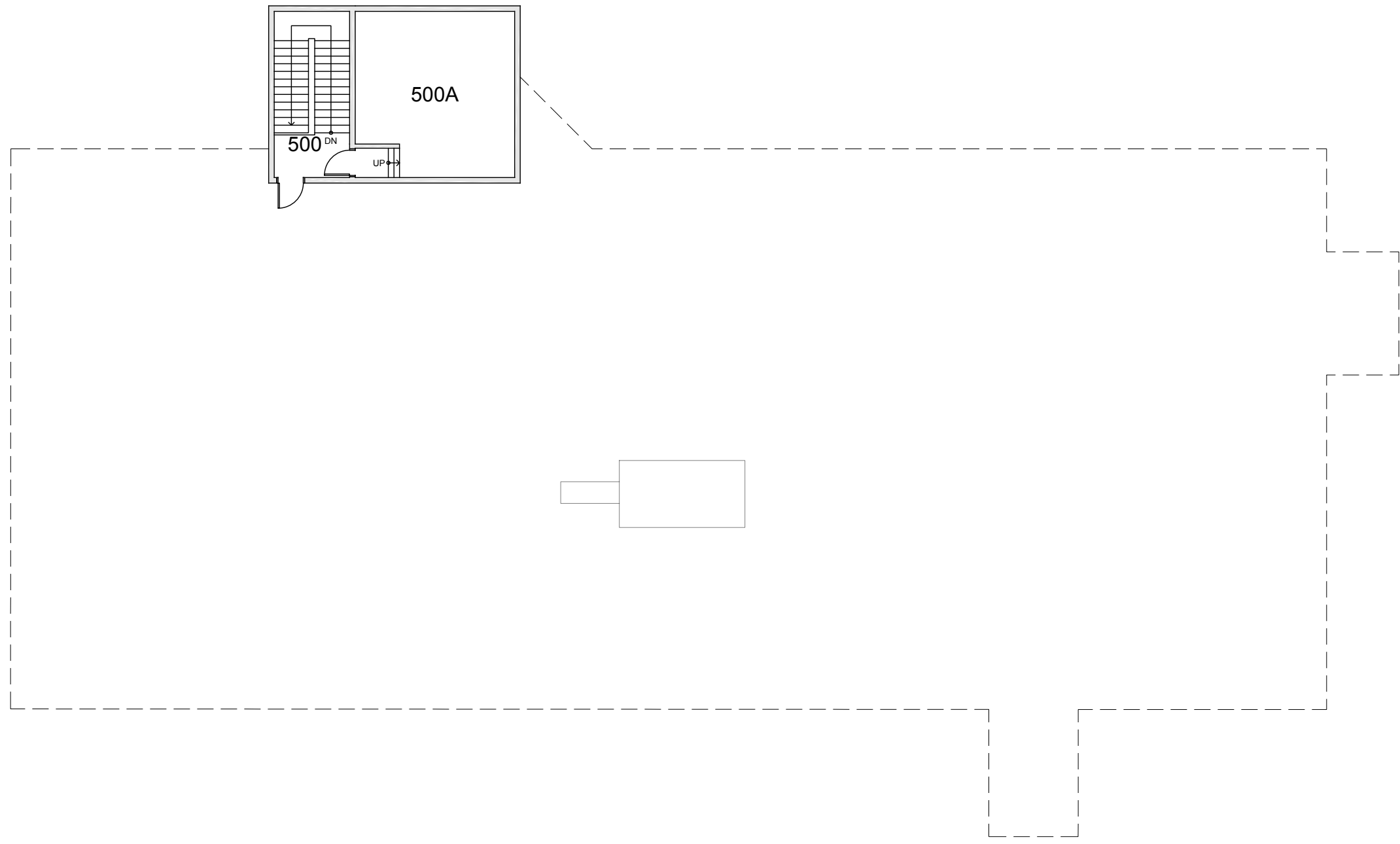
Date Revised: 03/14/2016

# PARKS HALL

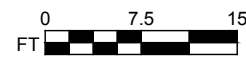
## LEVEL 400

Last Sync With FAMIS: 11/18/2015

Building/Zone  
**PH**  
Floor #  
**4**



Western Washington University (WWU) makes these documents available on an "as is" basis. All warranties and representations of any kind with regard to said documents are disclaimed, including the implied warranties of merchantability and fitness for a particular use. WWU does not warrant the documents against deficiencies of any kind.



TRUE NORTH



Date Revised: 03/14/2016

**PARKS HALL**  
ROOF

Last Sync With FAMIS: No Date

Building/Zone

**PH**

Floor #

**R**