



Western Washington University (WWU) makes these documents available on an "as is" basis. All warranties and representations of any kind with regard to said documents are disclaimed, including the implied warranties of merchantability and fitness for a particular use. WWU does not warrant the documents against deficiencies of any kind.



ACADEMIC INSTRUCTIONAL CENTER EAST
FIRST LEVEL

Date Revised: 03/11/2016 Last Sync With FAMIS: 09/22/2015

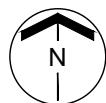
Building/Zone	AI
Floor #	1



Western Washington University (WWU) makes these documents available on an "as is" basis. All warranties and representations of any kind with regard to said documents are disclaimed, including the implied warranties of merchantability and fitness for a particular use. WWU does not warrant the documents against deficiencies of any kind.



TRUE NORTH



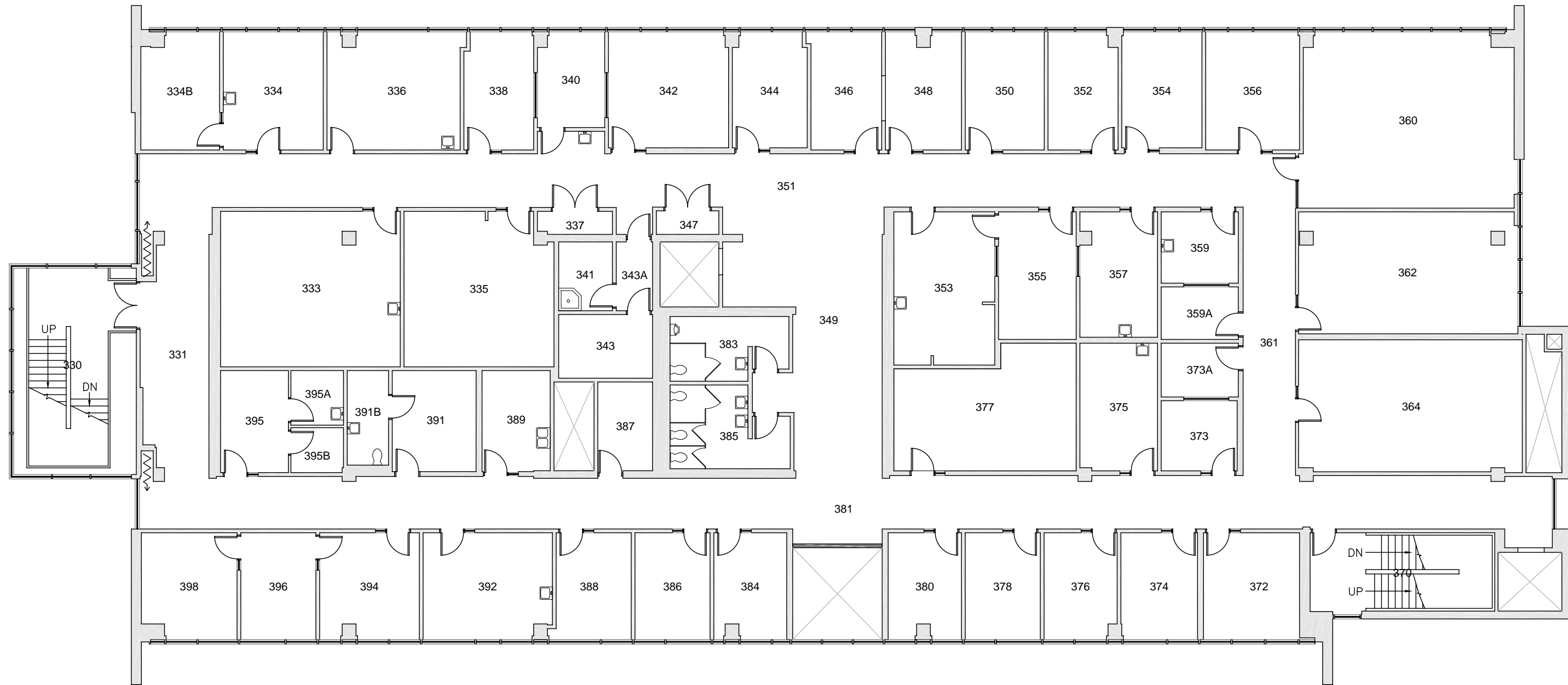
ACADEMIC INSTRUCTIONAL CENTER EAST

SECOND LEVEL

Date Revised: 03/11/2016

Last Sync With FAMIS: 09/22/2015

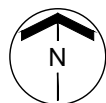
Building/Zone	AI
Floor #	2



Western Washington University (WWU) makes these documents available on an "as is" basis. All warranties and representations of any kind with regard to said documents are disclaimed, including the implied warranties of merchantability and fitness for a particular use. WWU does not warrant the documents against deficiencies of any kind.



TRUE NORTH



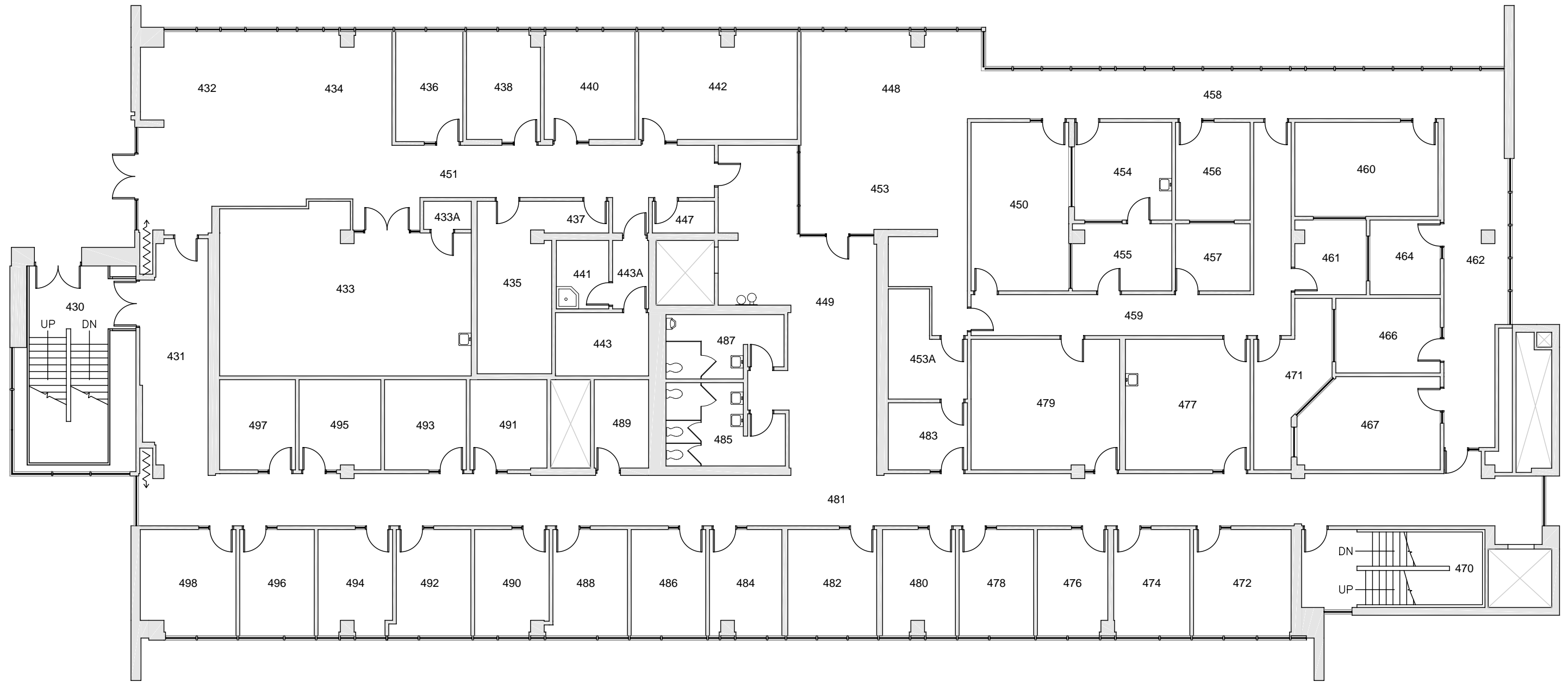
ACADEMIC INSTRUCTIONAL CENTER EAST

THIRD LEVEL

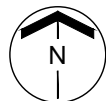
Date Revised: 03/11/2016

Last Sync With FAMIS: 09/22/2015

Building/Zone
AI
Floor #
3



Western Washington University (WWU) makes these documents available on an "as is" basis. All warranties and representations of any kind with regard to said documents are disclaimed, including the implied warranties of merchantability and fitness for a particular use. WWU does not warrant the documents against deficiencies of any kind.



ACADEMIC INSTRUCTIONAL CENTER EAST

FOURTH LEVEL

Date Revised: 03/11/2016

Last Sync With FAMIS: 09/22/2015

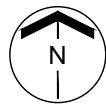
Building/Zone	AI
Floor #	4



Western Washington University (WWU) makes these documents available on an "as is" basis. All warranties and representations of any kind with regard to said documents are disclaimed, including the implied warranties of merchantability and fitness for a particular use. WWU does not warrant the documents against deficiencies of any kind.



TRUE NORTH



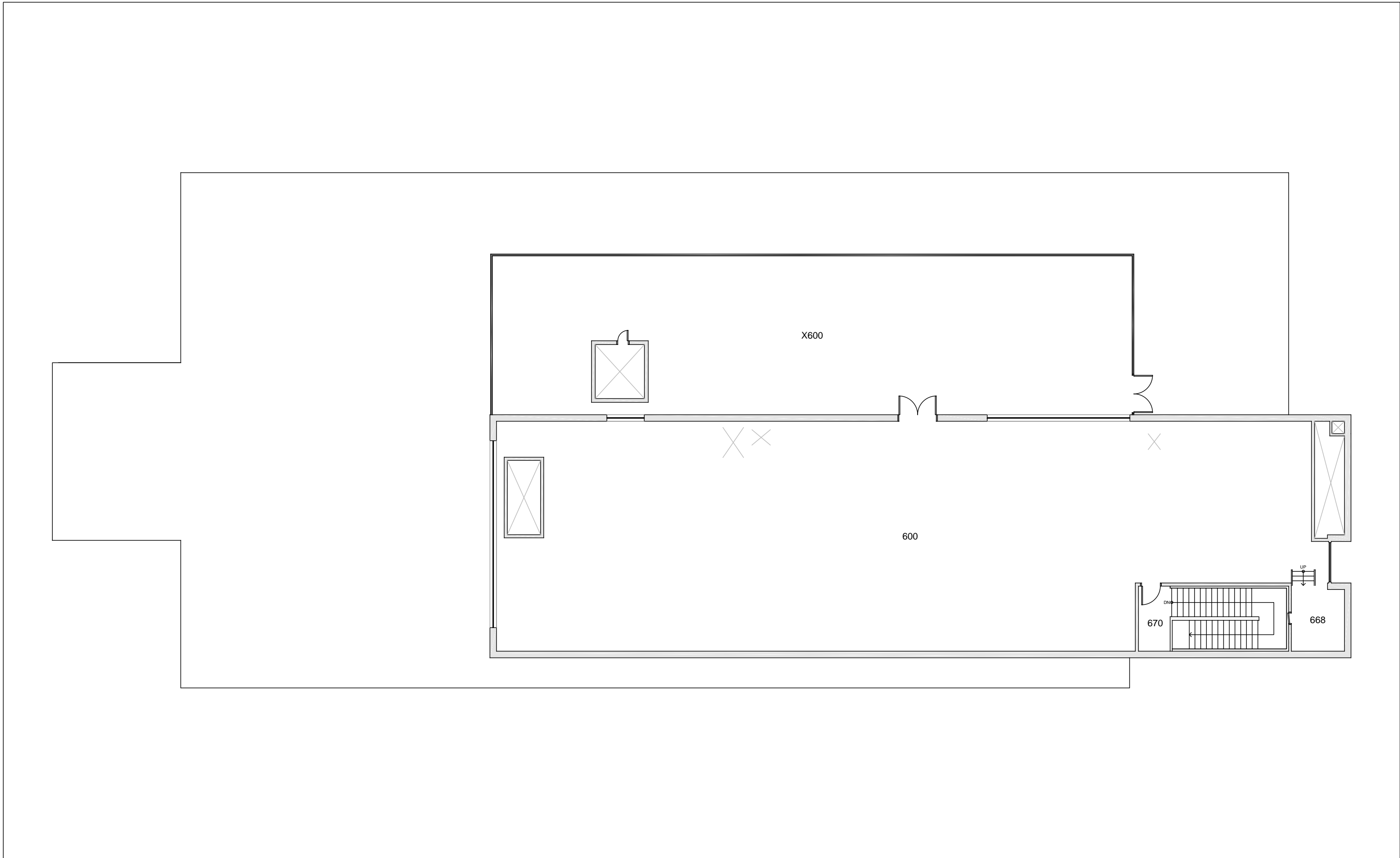
ACADEMIC INSTRUCTIONAL CENTER EAST

FIFTH LEVEL

Date Revised: 03/11/2016

Last Sync With FAMIS: 09/22/2015

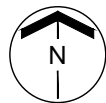
Building/Zone
AI
Floor #
5



Western Washington University (WWU) makes these documents available on an "as is" basis. All warranties and representations of any kind with regard to said documents are disclaimed, including the implied warranties of merchantability and fitness for a particular use. WWU does not warrant the documents against deficiencies of any kind.



TRUE NORTH



ACADEMIC INSTRUCTIONAL CENTER EAST

PENTHOUSE / ROOF

Date Revised: 03/11/2016

Last Sync With FAMIS: 09/22/2015

Building/Zone	AI
Floor #	6