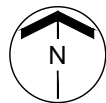


Western Washington University (WWU) makes these documents available on an "as is" basis. All warranties and representations of any kind with regard to said documents are disclaimed, including the implied warranties of merchantability and fitness for a particular use. WWU does not warrant the documents against deficiencies of any kind.



TRUE NORTH



ENVIRONMENTAL STUDIES CENTER

BASEMENT

Date Revised: 03/14/2016

Last Sync With FAMIS: 09/10/2015

Building/Zone

ES

Floor #

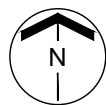
B



Western Washington University (WWU) makes these documents available on an "as is" basis. All warranties and representations of any kind with regard to said documents are disclaimed, including the implied warranties of merchantability and fitness for a particular use. WWU does not warrant the documents against deficiencies of any kind.



TRUE NORTH



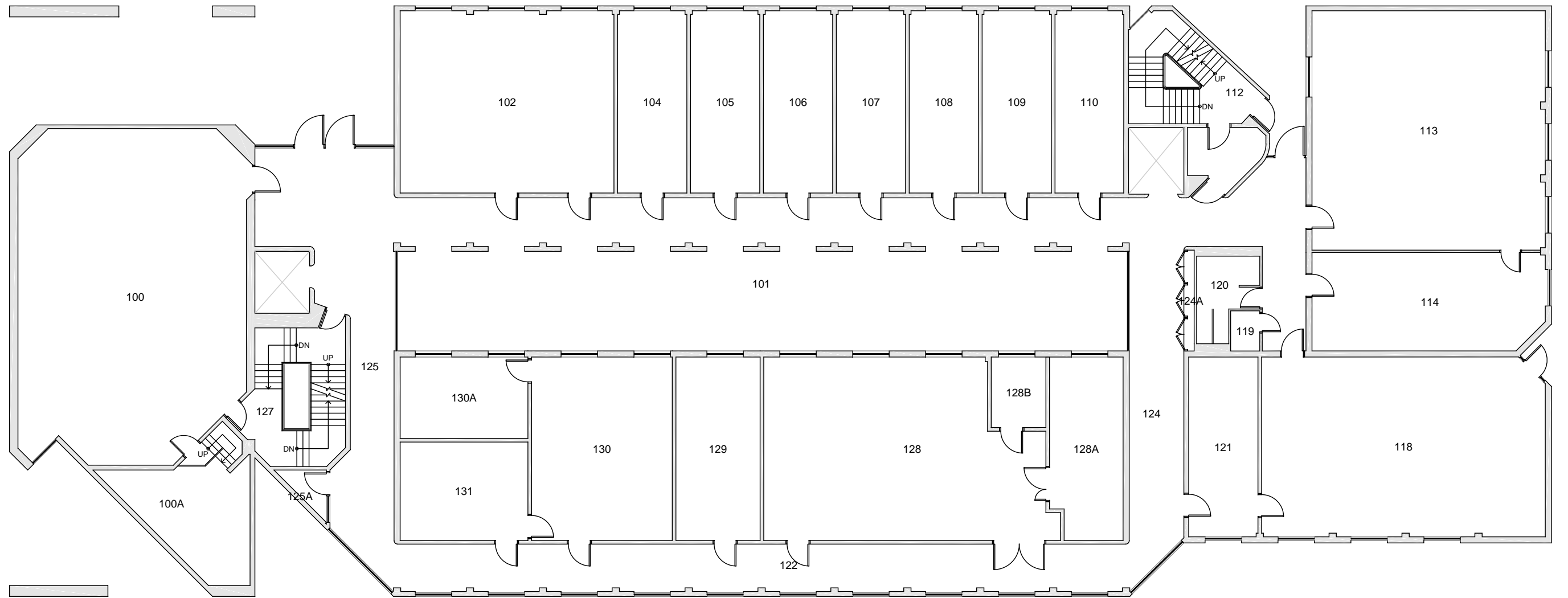
ENVIRONMENTAL STUDIES CENTER

CONCOURSE

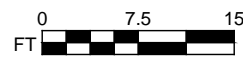
Date Revised: 03/14/2016

Last Sync With FAMIS: 09/10/2015

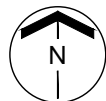
Building/Zone	ES
Floor #	C



Western Washington University (WWU) makes these documents available on an "as is" basis. All warranties and representations of any kind with regard to said documents are disclaimed, including the implied warranties of merchantability and fitness for a particular use. WWU does not warrant the documents against deficiencies of any kind.



TRUE NORTH



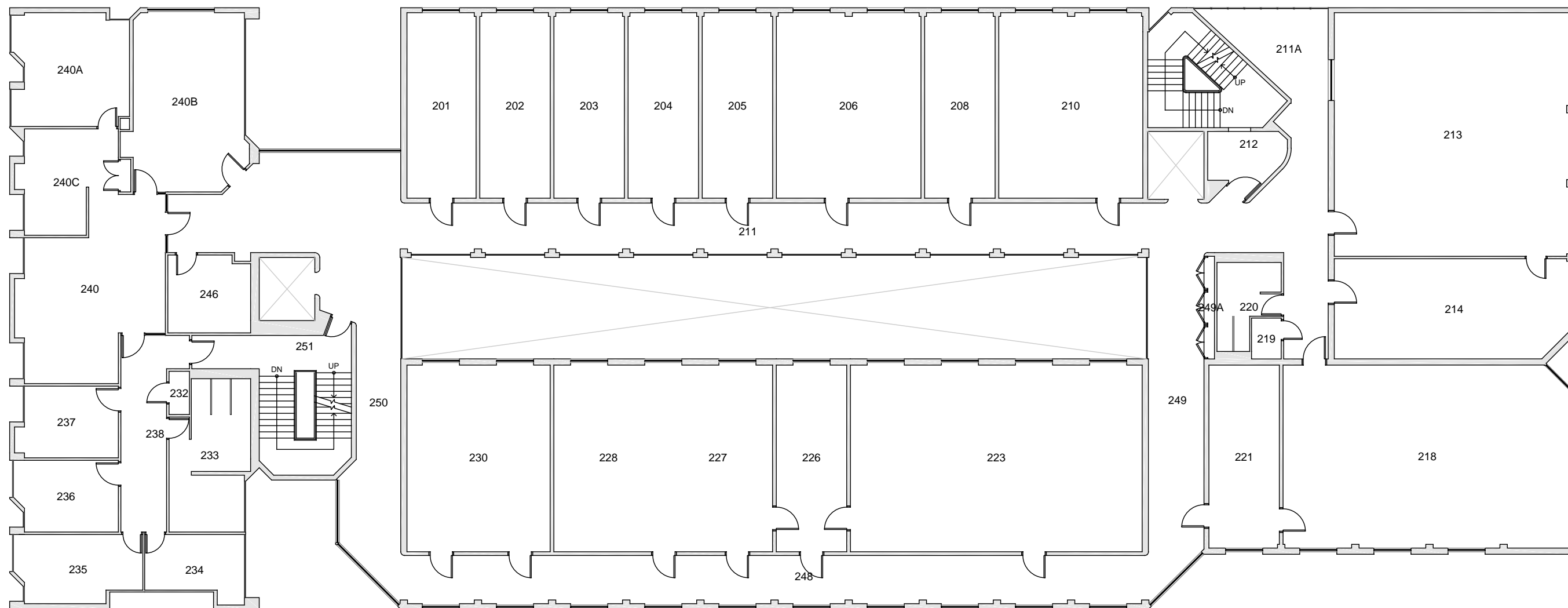
ENVIRONMENTAL STUDIES CENTER

FLOOR 1

Date Revised: 03/14/2016

Last Sync With FAMIS: 09/10/2015

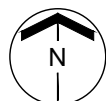
Building/Zone	ES
Floor #	1



Western Washington University (WWU) makes these documents available on an "as is" basis. All warranties and representations of any kind with regard to said documents are disclaimed, including the implied warranties of merchantability and fitness for a particular use. WWU does not warrant the documents against deficiencies of any kind.



TRUE NORTH



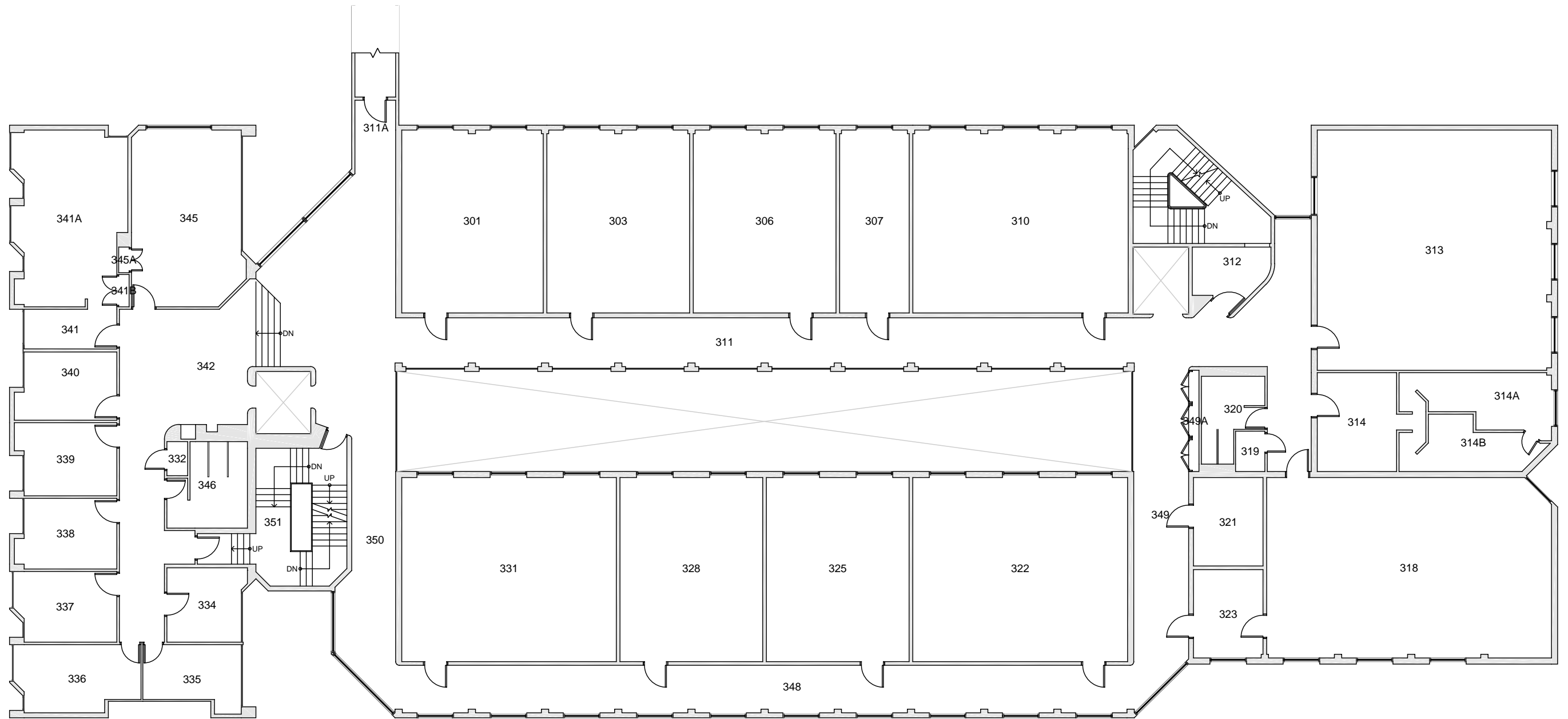
ENVIRONMENTAL STUDIES CENTER

FLOOR 2

Date Revised: 03/14/2016

Last Sync With FAMIS: 09/10/2015

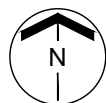
Building/Zone
ES
Floor #
2



Western Washington University (WWU) makes these documents available on an "as is" basis. All warranties and representations of any kind with regard to said documents are disclaimed, including the implied warranties of merchantability and fitness for a particular use. WWU does not warrant the documents against deficiencies of any kind.



TRUE NORTH



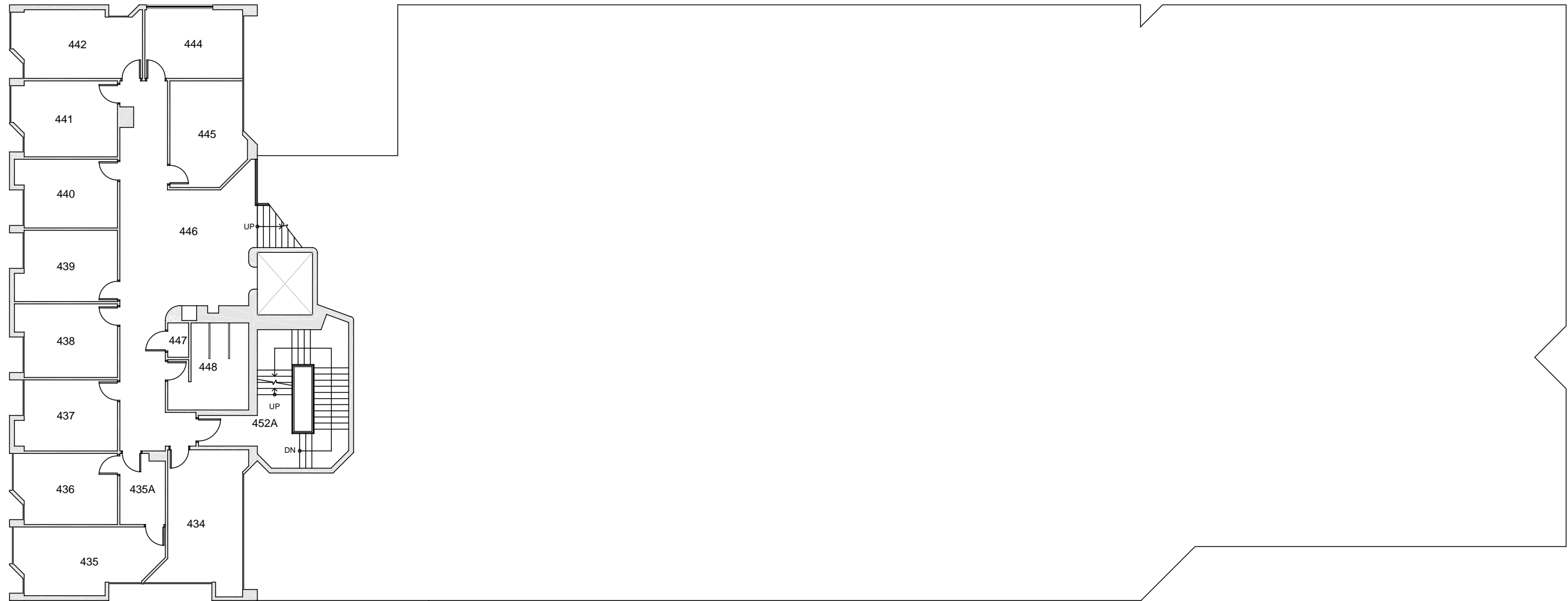
ENVIRONMENTAL STUDIES CENTER

FLOOR 3

Date Revised: 03/14/2016

Last Sync With FAMIS: 09/10/2015

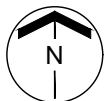
Building/Zone	ES
Floor #	3



Western Washington University (WWU) makes these documents available on an "as is" basis. All warranties and representations of any kind with regard to said documents are disclaimed, including the implied warranties of merchantability and fitness for a particular use. WWU does not warrant the documents against deficiencies of any kind.



TRUE NORTH



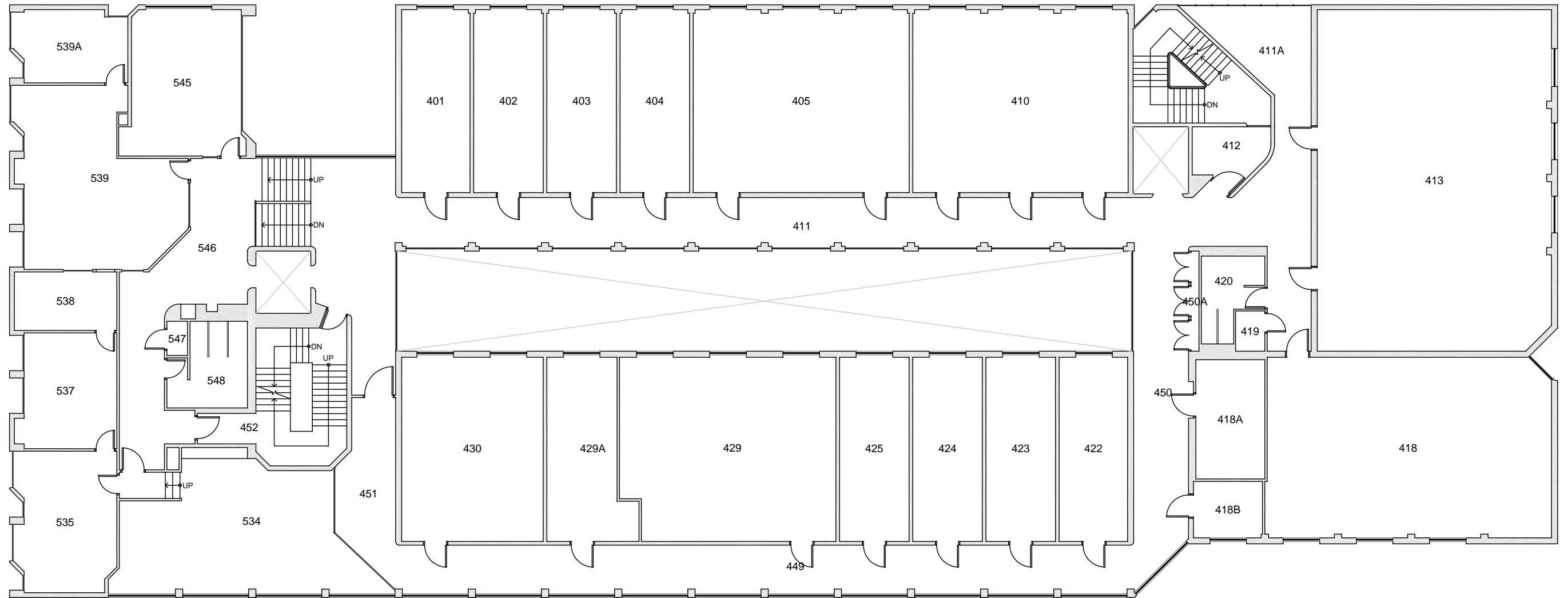
ENVIRONMENTAL STUDIES CENTER

FLOOR 4

Date Revised: 03/14/2016

Last Sync With FAMIS: 09/10/2015

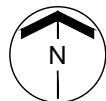
Building/Zone	ES
Floor #	4



Western Washington University (WWU) makes these documents available on an "as is" basis. All warranties and representations of any kind with regard to said documents are disclaimed, including the implied warranties of merchantability and fitness for a particular use. WWU does not warrant the documents against deficiencies of any kind.



TRUE NORTH



ENVIRONMENTAL STUDIES CENTER

FLOOR 4 & 5 SPLIT

Date Revised: 03/14/2016

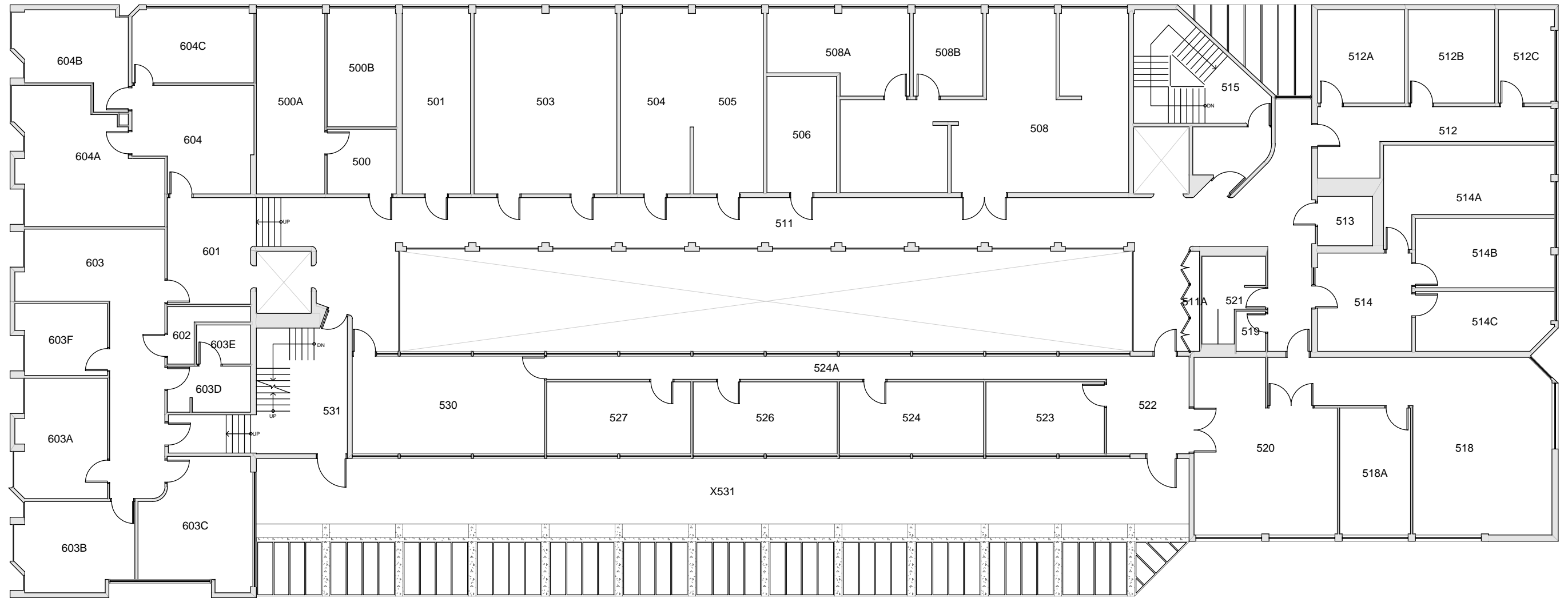
Last Sync With FAMIS: 09/10/2015

Building/Zone

ES

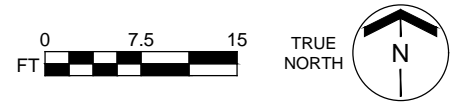
Floor #

4-5



BASE FLOOR PLAN

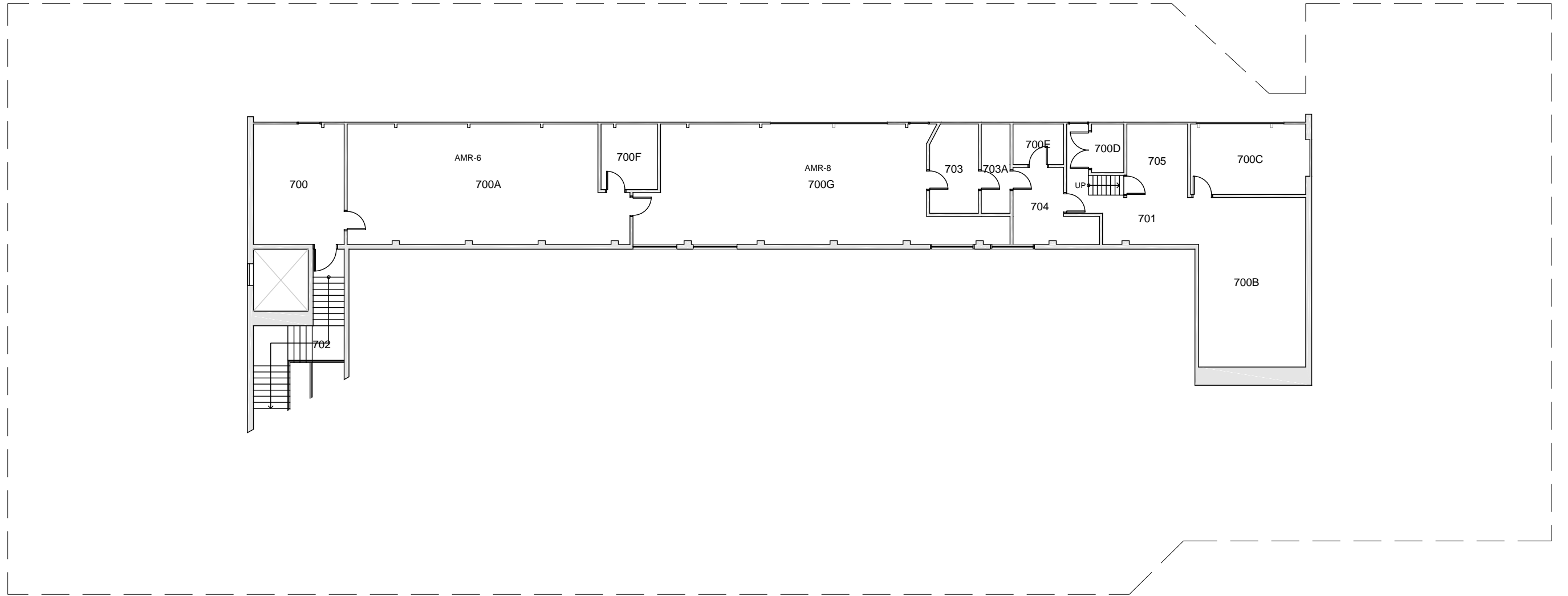
Western Washington University (WWU) makes these documents available on an "as is" basis. All warranties and representations of any kind with regard to said documents are disclaimed, including the implied warranties of merchantability and fitness for a particular use. WWU does not warrant the documents against deficiencies of any kind.



ENVIRONMENTAL STUDIES CENTER
FLOOR 05 & 06 SPLIT

Last Drawing Revision: 03/14/2019 Last Sync With AIM: 03/14/2019

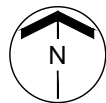
Building	ES
Floor #	5-6



Western Washington University (WWU) makes these documents available on an "as is" basis. All warranties and representations of any kind with regard to said documents are disclaimed, including the implied warranties of merchantability and fitness for a particular use. WWU does not warrant the documents against deficiencies of any kind.



TRUE NORTH



ENVIRONMENTAL STUDIES CENTER

PENTHOUSE FLOOR 7

Date Revised: 03/14/2016

Last Sync With FAMIS: 09/10/2015

Building/Zone	ES
Floor #	7